

ASHBRITTLE GREENHAM STAWLEY BATHEALTON KITTISFORD



# Parish news

June 2026

For the Parishes of ASHBRIITLLE with GREENHAM, BATHEALTON, STAWLEY and KITTISFORD

## Church Services

### Sun 7<sup>th</sup> June

10.00am	Holy Communion Service	St. Michael's, Stawley
10.00am	Holy Communion Service	Holy Cross, Sampford Arundel
10.30am	Sung Eucharist Service	All Saints, Rockwell Green
6.00pm	Shanty Singers	All Saints, Rockwell Green

*Learn how to sing Sea Shanties with a friendly crowd*

### Sun 14<sup>th</sup> June

10.00am	All Age Communion Service	St. Bartholomew's, Bathealton
	<i>Come at 9.00am and enjoy the Bathealton Big Breakfast in the Village Hall</i>	
10.30am	Sung Eucharist Service	All Saints, Rockwell Green
6.00pm	The Pub Explorers	The Martlet Inn, Langford Budville

*A relaxed conversation over a drink, bring any question and join in*

### Sat 20<sup>th</sup> June Walk West Tone 2026

All information, including timings throughout the day, can be found at [westtone.org.uk/walk](http://westtone.org.uk/walk)

### Sun 21<sup>st</sup> June

10.00am	Holy Communion Service	St. Margaret's, Thorne St. Margaret
10.30am	Sung Eucharist Service	All Saints, Rockwell Green
11.15am	Matins Service	St. John the Baptist, Ashbrittle
6.00pm	Prayer and Praise	St. Michael's, Stawley

*A charismatic worship service with contemporary music, talk and prayer*

### Sun 28<sup>th</sup> June

10.30am	Sung Eucharist Service	All Saints, Rockwell Green
4.00pm	Family@4	All Saints, Rockwell Green
	<i>A time for our youngest to play and learn from a helpful Bible story</i>	
6.00pm	Evensong	St. Nicholas', Kittisford
6.00pm	Evensong	Holy Cross Sampford Arundel

For more information about all our services and events please visit our website [westtone.org.uk](http://westtone.org.uk) or contact Revd Andy at [welcome@westtone.org.uk](mailto:welcome@westtone.org.uk)

## Churchwardens and Clergy

<b>Ashbrittle</b>	Charles Doble, The Old Rectory, Ashbrittle, TA21 0LQ	01823 672365
	David Hanks, Manley House, Ashbrittle, TA21 0LE	01823 672436
<b>Bathealton</b>		07449 196673.
<b>Kittisford</b>	Annie Musgrove, Meadow Farm, Greenham, TA21 0JW	07530 310795
<b>Stawley</b>	Penny Hare, Stawley Mill, Wellington, TA21 0HT	01823 672183
	Colin Haddrell, Tucks Farm, Stawley, TA21 0HS	07974 804990

**Priest-in-Charge** Reverend Andrew Barton, 2 White Oaks, Langford Budville, TA21 0RB  
 Contacts: Home/Office - Phone 01823 924007 or 07795 699737 Email [revdbarton@gmail.com](mailto:revdbarton@gmail.com)

**Curate** Reverend Sarah Rowden - Contacts: Phone 07599 336105 Email [revdrowden@gmail.com](mailto:revdrowden@gmail.com)

**Front cover** - A flood of buttercups - photograph by Rachel Oliver.

## Thought for the Month

Walking is one of life's simplest pleasures. In our busy and increasingly digital world, the act of putting one foot in front of the other offers something deeply valuable; time to slow down, notice our surroundings, and reconnect with both nature and one another.

Living in the Somerset countryside gives us a wonderful advantage. We are surrounded by footpaths, lanes, hedgerows, and open fields that invite exploration in every season. A short evening stroll can clear the mind after a long day, while a longer walk brings fresh air, exercise, and a renewed appreciation for the beauty on our very doorstep.

The health benefits of walking are well known. Regular walking improves heart health, strengthens muscles and joints, and supports mental wellbeing. It reduces stress and anxiety, helping us feel calmer and more energised. Best of all, it requires no expensive equipment or special training - only a comfortable pair of shoes and the willingness to step outside.

### The added benefits

Yet walking offers more than physical benefits. It creates opportunities for conversation and friendship. In villages and rural communities like ours, neighbourly connections are often formed not in formal meetings but in everyday encounters: a greeting at the gate, a shared footpath, or a chat while walking the dog. These small moments help strengthen the fabric of community life.

Organised village walks, walking groups, or even simply making time to walk with a neighbour can help combat loneliness and build understanding between generations. Walking side by side often makes conversation easier and more natural.

One such event is taking place later this month on Saturday 20<sup>th</sup> June. **Walk West Tone** is a fourteen mile route that links all of the communities in the West Tone Benefice, your local family of churches. You can join us for the whole walk or step in as the route passes your home. Either way, you can be assured of a warm welcome and plenty of refreshment at our church pit stops. The bell ringers will be out in force, and there will be some light-hearted sing-alongs to enjoy too. You can find out more by visiting the walk's information page at [westtone.org.uk/walk](http://westtone.org.uk/walk)

As the days grow longer and the countryside changes with the seasons, perhaps this is the perfect time to rediscover the joy of walking - not only for our own wellbeing, but for the health and warmth of our community too.

*Revd Andy Barton* 3

## News from the Parish News

Following the very sad loss of Andrew Millard, our treasurer, we are delighted to announce that Pat Sweet has agreed to take on that role. Pat is already treasurer of Stawley Parish Council, so we are sure that our finances will be in safe hands.

It will take a couple of weeks for our new treasurer to become familiar with the accounts and so recent donations will not be acknowledged until the next issue of the magazine.

In the meantime donations can be made at Stawley Village Shop, sent directly to the treasurer, or directly to our bank account - full details inside the back cover

*Avril and Maurice*

### **Walk, cycle, run, sit or ride Saturday 20<sup>th</sup> June Walk West Tone 2026**

Join the annual community walk with its stunning views of the West Tone Benefice. Enjoy some or all of 14 miles from Sampford Arundel to Ashbrittle, winding through the beautiful lanes and countryside.

Wend your way from church to church, with stunning buildings as our waypoints and refreshment stops as we travel the land in which they lie.

**Would like more info? Joining us for the BBQ? Have a question?**

**Visit:** [westtone.org.uk/walk](http://westtone.org.uk/walk)

**Email:** [walk-westtone@icloud.com](mailto:walk-westtone@icloud.com)

You're Invited!



# Bathealton Big Breakfast

9.00am Sunday 14th June 2026

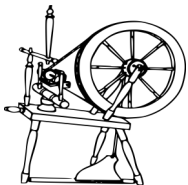
Join us for a FREE Sunday spread in friendly company  
Vegan and vegetarian options available

All are welcome at Bathealton Village Hall  
whether you just come for breakfast or join us for the  
All Age Communion Service that follows at 10.00am

Any queries call the Churchwarden on 07449 196673



Bathealton Village Hall • Everyone Welcome • Bring the whole family!



## Spinning and Woolcraft Group

A twice-monthly get-together at a member's house for textile crafting, chat and a cuppa

Perhaps you would like to learn to spin with us?  
Or bring along your knitting, crochet or other  
needlework project

All welcome

If you would like to join us, please contact me and  
I will add you to the mailing list.

### Next Sessions

Tuesdays: 2nd and 16th June  
7th and 21st July  
at 2.30pm

Contact Pauline on 01823 672222 or  
email [pjw200355@gmail.com](mailto:pjw200355@gmail.com)

## STAWLEY MILL

JOIN US FOR



BOOKS & BISCUITS

COFFEE & CAKE

1ST & 3RD WEDNESDAY OF EVERY MONTH

3RD & 17TH JUNE

10AM—12.30PM

IN AID OF CHURCH RESTORATION FUND



# Stawley Church

Garden Party and Fete



## Stawley Mill

TA21 0HT

**2pm Saturday 6th June**

Plants, Cakes, Bottles, Books, Raffles and Bric a Brac

Cream Teas and Strawberries

**£1 Entrance**

*All proceeds to the Church*

## Quaker Meeting for Worship

Spiceland Quaker Meeting Uffculme  
EX15 3AZ

*We Meet for Worship at Spiceland  
every Sunday at 10.30am till 11.30am  
also available on Zoom -*

**Meeting ID:865 5570 2735 Passcode:  
498173**

## The two Hands of Nonviolence

### Refusing to Comply with Injustice

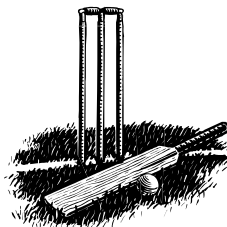


With one hand we say to one who is angry, or to an oppressor, or to an unjust system, 'Stop what you are doing. I refuse to honour the role you are choosing to play. I refuse to obey you. I refuse to build the walls and the bombs. I refuse to pay for the guns. With this hand I will even interfere with the wrong you are doing. I want to disrupt the easy pattern of your life.

### Refusing to Deny our Dignity



But then the advocate of nonviolence raises the other hand. It is raised out-stretched - maybe with love and sympathy, maybe not - but always out-stretched. With this hand we say, 'I won't let go of you or cast you out of the human race. I have faith that you can make a better choice than you are making now, and I'll be here when you are ready. Like it or not, we are part of one another.



## Ashbrittle, Stawley and Clayhanger Cricket Club

The youth games have been a fantastic success so far, with both fixtures showing great development alongside great teamwork.

All the players have trained well, and put their practice into their games brilliantly, showing that the future of the Ashbrittle Cricket Club is very bright! (*see team photograph on the back page*).

### Senior teams

Our Men's Team's have had a mixed start, with the 2nd XI having a great win in the game they have played, but unfortunately have also had a few fixture cancellations.

The 1st XI are doing well in the league, while also notching a superb win in the Baker Cup, in which they face a great test against Taunton Deane 1st XI in the next round. Dates to be announced.

*Callum Hamer*



## Bathealton Village Hall

### POP UP CAFÉ

A friendly warm space: time to catch up with old friends or meet new ones.

**The next 'Pop - Up' will be on:**

**Monday 1st June**

We will serve food from 12 noon till 2.00 pm

#### Menu:

Home made quiche with new potatoes and mixed salad

#### Sweet:

Home made Bakewell tart or lemon meringue pie

Unlimited Cafetiere of Coffee or a selection of teas - all for £9.00.

*You can reserve a place by calling Del on 07980 994082 or just pop in.*

# STAWLEY FESTIVAL

2026

Sunday 5th July 2-5pm

**MOLLY LOCK | RADIO SUNSET |  
KARL FICAROTTA + OPEN MIC**

**Music, Food, Stalls, Kids  
Activities & Good Vibes!**

**Appley Pavilion, TA21 0HH**

Adults £5 (18+)

Kids £2.50 (1+)

Family Ticket £15 (2 Adults & 3+ Kids)

For more details on signing  
up for open mic or stalls  
email – [stawleyfestival@gmail.com](mailto:stawleyfestival@gmail.com)

Pre buy tix:



Proceeds are equally split between FOSS and Stawley Preschool.

FOSS - Charity number: 1107306

Sorry, only Assistance Dogs are permitted at the Pavilion.



## Wivey Secret Gardens Weekend

6th and 7th June

**We have lots of events, please join us!**

For details please go to <https://wiveycares.net/>

### Secret Gardens

Follow the circular garden trail and explore hidden gems around Wiveliscombe. **Twenty** private gardens are looking forward to welcoming you, with some also displaying art.

Enjoy refreshments, entertainment, plant sales and more in Jubilee Gardens, 10am – 5pm. Wildlife enthusiasts will advise you on how to make your garden attractive for wildlife. £10pp for the weekend, £5 for 13-17 year olds, under 12s have free entry.

#### 3pm, Saturday only:

Guided tour of St Andrew's churchyard with Bob Croft. Meet by the church door. Free event.

#### 2-4pm, Sunday only:

Visit the St Andrew's allotments and chat to some of the proud growers. Access from Russels. Free event.

#### 10.00 -10.45am, Sunday only:

Interested in finding out more about bird watching? Adrian from Wivey Birders will lead a short walk; meet him by the notice board in Luxton Way, opposite Dixon Close, Wiveliscombe. Free event. Four secret gardens are nearby for you to visit afterwards.

### Intriguing Garden and Wildlife Tales

Find out what is involved in restoring a local one-acre David Austin rose garden. Hear from an expert how to attract and support local wildlife. Hosted by Pauline Homeshaw.

**When:** Saturday 6th June, 5.30pm for a 6.00pm start, Wiveliscombe Community Centre.

**Entry** is free, donations are welcome. Refreshments available.

### Arts and Crafts Fair

Looking for something truly unique? Join us on 6th and 7th June 2026 and support local artists and crafters! Open 11.00am – 4.00pm.

**Venue:** Secret Meadow, Weekmoor, Milverton, TA41QE *//undertook.sweeper.leathers*

**Entry** is free, Donations welcome.

### How does it work?

Buy tickets online at <https://wiveycares.net/gardens#tickets> and pick up your wristband and garden passport from Jubilee Gardens on 6th or 7th June. Information on garden locations and accessibility can also be found on our website.

*Valeria Coots, Wivey Cares Trustee*

### Gardening Club

The first Garden Visit of the year, at the end of April, was to Greencombe Gardens, Porlock. The Club's calendar could not have started better, as the visit was memorable for so many reasons.

Firstly, the weather was perfect – just a magical spring day! Secondly, the event was hugely popular, with nineteen members attending and several mortified that they had diary clashes. Thirdly, lunch beforehand at the Ship Inn, Porlock Weir, was superb and very efficiently served. Last, but by no means least, the garden was truly wonderful!

#### A magical garden

Greencombe was the brain-child of Joan Loraine, who created a magical three acre garden on a steep, north-facing wooded slope overlooking Porlock Bay and gardened there for over fifty years, even in her nineties! The garden's setting is perfect and the planting exceptional, with just a treasure trove of rare and beautiful plants. The garden holds four National Collections, and we were fortunate to see some of the delightful Erythroniums flowering amidst other woodland specials. Indeed, the unique nature of the garden was recently highlighted by The Telegraph as 'One of the ten most enchanting gardens to visit in Spring in the UK'!

The garden is now owned and managed by the charming Rob Schmidt, a nephew of the late Joan Loraine. During the planning of the visit, Rob kindly offered to host a cream tea on one of the lawn terraces – something which was beautifully and generously presented and much appreciated by members attending. Tea formed a fitting end to what was unanimously agreed as a memorable Gardening Club occasion!

The garden has only limited opening times; the Club was fortunate that Rob offered to open it especially for us. For anyone wishing to visit the garden, it is advisable to check the website beforehand (<https://greencombe.org/>) – we guarantee you will not be disappointed!

New members are always welcome to join and enjoy many special occasions, such as this!

*Val Wall*



# Waterrow Village Hall BBQ

Saturday July 18th 2026 - 12.30pm

Free picture quiz  
with prizes and fun  
kids activities

# Summer

# BARBECUE



Great food range and homemade dessert selection.

Bring your own soft/alcoholic drinks.

Entry just £12 for Adults and £6 for Under 12s

Get your tickets from Liz at St Andrews café on Thursday Mornings or call Sarah on 01398 361202

## Blake

BESPOKE INSTALLATIONS



Design - Manufacture - Installation  
Custom cabinetry from kitchens to gun rooms

info@blakebespoke.com  
07952 805776

Manufactured in Waterrow



www.technological.co.uk/ex16

# Full Fibre Broadband

## *Free Connection using UK Gigabit Voucher*

### *Register Interest Now*

### *Funding Available*

#### BASIC BROADBAND

40Mbps

Symmetrical Service

£40 a Month

- No Connection Charge\*
- 40Mbps Download
- 40Mbps Upload
- Unlimited Usage
- 12 Month Contract
- Wireless Router
- Optional Phone Service

Inc VAT (\*with Voucher)

#### ULTRAFAST

300Mbps

Symmetrical Service

£75 a Month

- No Connection Charge\*
- 300Mbps Download
- 300Mbps Upload
- Unlimited Usage
- 12 Month Contract
- Wireless Router
- Optional Phone Service

Inc VAT (\*with Voucher)

Find out more & sign-up online  
[info@technological.co.uk](mailto:info@technological.co.uk)



Funded by  
UK Government



TECHNOLOGICAL

# Boules in Ashbrittle



Ashbrittle Parish Council is happy to announce that it has received funding for a **village pétanque court** from Somerset Association of Local Councils (SALC) for which we are enormously grateful.

The court will be built in the space in front of the skittle alley adjacent to the village hall with the kind permission of the owner Charles Doble.

A small group of volunteers will begin work over the coming weeks. It is hoped that it will not only be a place to play pétanque but an outdoor meeting area with benches and tables to be enjoyed by all.

We will update you with images of the construction once underway.

## ASHBRITTLE VILLAGE HALL

### BBQ

Friday 26<sup>th</sup> June 7.00 pm

£5 per head

Bring your own drinks

Raffle



## Minutes of the Stawley Parish Council Meetings held on the 28<sup>th</sup> April 2026

Two meetings were held; the first was the normal Council meeting and the second the Annual Parish Meeting.

This report is an amalgamation of the things that were discussed and agreed.

### Finance

The current bank balance is £5,995.50 and the Unity Bank balance is £10,372.61

Accounts for 2025/26 were examined. It was accepted by the Council that, in the absence of a debit card for the Lloyds account, payments for services that require card payment continue to be made by the Chairman who is then reimbursed. The accounts were accepted by the Council.

Details of the AGAR were read. It was determined that the Council was exempt from audit and the AGAR was signed by the Chair and the Finance Officer.

The Council decided to withdraw from the Somerset Association of Local Councils (SALC).

### Planning

**Greenham Cottage field.** The owners of the field have moved away and it is possible that the property may be put on the market. An enforcement order is still needed to ensure the field is restored and the gates removed.

**Hedge appeal.** This appeal is still outstanding. The Planning Inspectorate 'lost' the original appeal but still have it on their file with the rest of a large backlog. Somerset Council continue to chase them for an answer.

### Reports from Members

- Roads - the slip on the Greenham to Cothay road is moving again. The landowner will be approached to determine the long term solution.
- Footpaths – the sign for the path going SW from Greenham is in Greenham Cottage and will be found before being out up.

### Emergency Planning

The meeting was informed that the WhatsApp Group for Emergency Planning was up and running and proving to be of some use to parishioners. The only emergencies that had occurred were road closures.

### Donations to local groups

Since the publication of the agenda an offer has been made for a part of the field adjacent to the school to be leased or rented to Somerset Council or the Parish Council to facilitate the construction of a car park.

This very generous offer will be gratefully

accepted by the Parish Council if it is not taken up by Somerset Council. Because some works will be required to make a safe car park, funds held by the Parish Council will be retained until the full cost that may be borne by the Council is known.

Consequently there will be no grants to local groups other than the standing ones to the Pavilion and churchyard maintenance.

The full minutes can be viewed at <https://stash.org.uk/>

*Paul Musgrove, Chairman*

## Ashbrittle Art and Craft Group

We hold a monthly get-together as a self-directed group to do whatever 'arty' or 'crafty' project takes your fancy.

### Painting and Drawing - Mosaics - Textiles Crafts - etc.

Come and meet some local art and craft enthusiasts, see what's going on and tell us about your favourite craft. We meet at a member's house. Arrangements will be confirmed in advance, via a monthly reminder email

**Next meetings:  
11th June and 9th July  
2.00 - 4.0 pm**

If you are interested in joining us, contact me by email below to be added to the mailing list:

*Pauline [pjw200355@gmail.com](mailto:pjw200355@gmail.com)*

## Mobile Library

at Greenham Bridge  
**Next visit: 16th June**  
9.50 - 10.10 a.m.

## Village Oil Group

The next oil delivery is due on  
**10th June 2026**  
To place an order, please email:-  
*[judy.milne@btinternet.com](mailto:judy.milne@btinternet.com)* or contact  
Judy or Michael Milne on 01823 672205 by the  
Monday before the Wednesday delivery  
New members always welcome

**Hello  
Sunshine!**

— THE —  
**GLOBE INN**  
APPLEY



Chill out this summer with a cold drink in our beautiful beer garden,  
or kick off the weekend by enjoying a freshly made pizza on a Friday night.



**Get your groove on in our garden marquee on  
Sunday 14th June**  
when you can chill out to country-fried acoustic  
rock and pop classics from local band



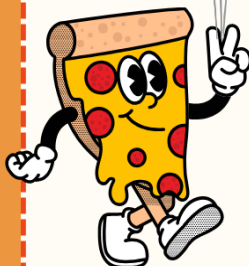
# Sundog Slide



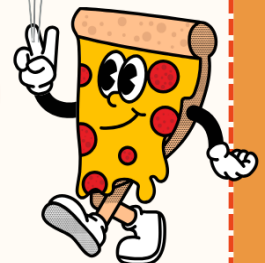
while tucking into delicious BBQ food.  
Music starts at 3.30pm, BBQ from 4pm.



**DID YOU KNOW....?  
WE HAVE A SPACIOUS  
MARQUEE IN OUR  
GORGEOUS GARDEN WHICH  
YOU CAN HIRE FOR  
PARTIES AND PRIVATE  
EVENTS.  
GIVE US A CALL FOR  
MORE DETAILS.**



## PIZZA WEEKEND



We'll be serving our delicious homemade pizzas  
from 6-9pm on Friday 26th and Saturday 27th June.

• *Please note: we will not be serving any food during the daytime on 26th, 27th, & 28th June.*

Open

Wednesday to Saturday 12 noon - 11pm

Sunday 12 noon - 4pm

Food

Served from 12 noon - 2pm & 6pm - 9pm

Pizza Night every Friday 6pm - 9pm (from 15<sup>th</sup> May)



Appley, Stawley, Wellington, Somerset, TA21 0HJ



01823 673147



stuartdurston@hotmail.co.uk



The Globe INN Appley

## A Brilliant Success for the Morag Berthon Memorial Plant Sale!

The British weather certainly kept us on our toes on Saturday! It rained through most of the morning set-up at Hellings Farm, leaving us to dry off tables and hope for the best. Luckily, shortly after the gates opened at 2:30 pm, the rain finally ground to a halt, and a fantastic crowd came streaming in.

Despite the damp start, the atmosphere was brilliant. Visitors spent a lovely afternoon chatting in the garden, listening to the wonderful live music from the Wiveleles, and eating their way through a spectacular variety of homemade tea and cakes.



*The Wiveleles kept everyone in good spirits throughout the afternoon.*

Between everyone who came along and our incredibly generous buyers, we are absolutely thrilled to share that we raised a grand total of £2,400! This is the most we have ever brought in from the event, and it was a massive team effort across all the stalls - from the beautiful plants, (Jo Forrester - your additional help was priceless - John, Julie and Shelley) and gardenalia (Kate Harris) to the honey (David Pearce), delicious cakes (Sarah, Adele, Nerys, Jess, Netta), the raffle (Tilly Willis) and ice cream (Holly Cottrell).

We owe a very special and heartfelt thank you to Michael and Richard Berthon for allowing us to host one more sale at the farm. Morag started this wonderful tradition alongside her husband Graham all the way back in 1994. There could truly be no better way to honour her legacy than breaking the all-time record, and we know both she and Graham would be incredibly proud to see how much the community achieved in their memory.

A huge part of this year's success is down to Junker Nursery; we owe them a massive debt of gratitude for their incredibly generous donation of fourteen trees and shrubs, which drew so many people to their stall.



*Lots of customers for the plants on offer from the moment the gates were opened.*

An afternoon like this takes a huge team effort! A massive shout-out must go to the "Bathealton Massive" and all the volunteers from further afield who rolled up their sleeves to help run the day - baking cakes, potting up plants, donating goods to fill the tables, and keeping everything running smoothly. We couldn't have done it without you! You made it an unforgettable day!

Thank you.

*Simone van der Linden*

**Community Radio for the  
10Parishes and Beyond**



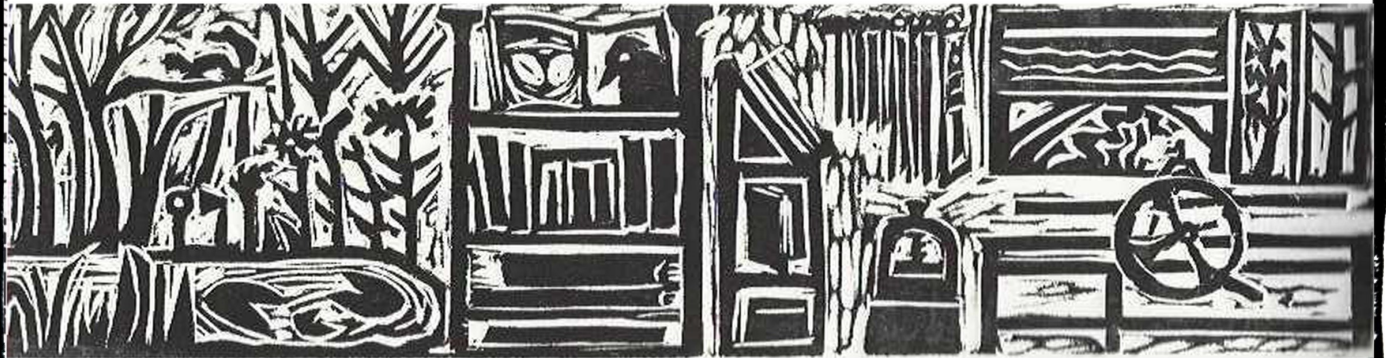
**Broadcasting 24 hours a day  
on FM radio and the Internet.  
For the people by the people.**

**Contact The Presenter Live :**

**Email : [studio@10radio.org](mailto:studio@10radio.org) Text : 07786202240**

**Message the Presenter via [10radio.org](http://10radio.org)  
or via the 10Radio App**

# SUMMER EXHIBITION



## GREENWAYS STUDIOS ASHBRITTLE TA21 OLE

JULY 2026	11 <sup>TH</sup> - 18 <sup>TH</sup>
SATURDAY	4 <sup>PM</sup> - 7 <sup>PM</sup>
OTHER DAYS	11 <sup>AM</sup> - 5 <sup>PM</sup>



LOUISE BAKER . BARBARA ROLL

[www.greenwaysstudios.com](http://www.greenwaysstudios.com)

## Safari Supper

Well! What a fantastic evening! Saturday 16th May was the Kittisford Safari Supper to raise funds for St Nicholas Church – but mainly just to have a good time. Thirty-two intrepid adventure seekers had signed up to walk from the top of Kittisford to the bottom, in their quest for good food, good company and a good time.

And by all accounts they were not disappointed!

The weather that day was not obliging: a bit chilly with scattered showers, so plans for outdoor festivities were curtailed somewhat. However, the revellers were not deterred and started the evening in style at Greater Brimley (Sarah and Nick's) where they were greeted with cocktails, which really got the party started, followed by a super starter of melon and cheese and Parma ham.



*A great start to the evening at Greater Brimley with lots of friendly interactions.*

Warmed up and in festive mode, the crowd was split in half for the main course, sixteen going to Springers (Penny and Maurice's) for a lamb tagine and the other sixteen going to Ridgeacre (Annie and Nick's) for a venison "pepperpot" casserole, where merriment continued to ensue until it was time to get back on the safari trail.

### An evening stroll

A stroll down the road, no umbrellas needed, brought everyone together again at Lutley Bridge Barn (Kate and Richard's). And here we were greeted in the darkness with a glittering campfire and gazebo for those who wished to stay outside, and inside a warm, cosy and chatty atmosphere with lovely desserts of rhubarb crumble, fruit salad and cheese and biscuits.

Everyone agreed that what was so nice about the event was the different vibe in each of

the venues and being able to meet up and chat with friends and neighbours old and new. It seems that a great time was had by all.

### A very happy ending

Funds raised? Not known yet. Fun raised? Plenty!

*Annie Bengé*

## Lunch Club

Once again one of our regular lunch clubbers gave us a talk. This time it was Walter Longden, not only telling us some of his family history - dating back to the fourteenth century - but also telling us how to go about finding out about our own.

I had no idea Walter has been on a 'finding out' trail since he was a teenager. It all started with a bequest to his father of a writing tablet, in fact a miniature desk complete with a secret compartment, which Walter had brought along to show us. So much fascinating material that Walter is returning in November to tell us more.

Our next lunch will be on Thursday 25th June at 12.00 noon. The speaker will be Stacy Walker from Hinkley Point. Recommended by one of our group, who has heard her speak elsewhere. She tells me she is not a nuclear engineer, but concentrates on the community aspects and 'fun facts' of this massive installation.

If you would like to hear more, please join us by booking with me.

My contact details are - telephone 01823 672203 or email [harlingdelia@gmail.com](mailto:harlingdelia@gmail.com)

*Delia Harling*



## Coffee, Cake and Chat

Ashbrittle Village Hall

**Saturday 20th June**

10.00 - 12.00 noon

**Unlimited Coffee and Delicious Home Baked  
Cakes available, for just £5.00.**

*Please come and join us - all welcome !*



**VILLAGE LUNCH CLUB  
ASHBRITTLE VILLAGE HALL**

Thursday, June 25th at 12 noon



**STACY WALKER**

*Working with the community at Hinkley Point.*



**BOOKING ESSENTIAL**  
Delia Harling 01823 672203  
harlingdelia@gmail.com



**AUTO FACTOR  
WORKSHOP**

**REPAIRS**

CLUTCH REPLACEMENT  
GEARBOX SERVICES  
BRAKE DISCS AND PADS

**VEHICLE RESTORATIONS**

COMPLETE RESTORATIONS  
BODYSHOP REPAIRS  
ENGINE REBUILDS

**TYRES**

REPLACEMENT SERVICE  
FIT & BALANCE  
PUNCTURE REPAIRS

**SERVICING**

DEALER PREPARATION  
INTERIM SERVICE  
SCHEDULED SERVICING

**MAINTENANCE**

FREE BATTERY TESTING  
WINDSCREEN FLUID TOP-UPS  
BRAKE CHECKS

**01823 587818**

AUTO FACTOR WORKSHOP LTD. UNIT 2 - 4 VALE YARD, FORD ROAD, WIVELISCOMBE TA4 2RE

## **Warmer weather doesn't lower the risk: Spring COVID jabs to protect vulnerable people**

As spring brings brighter weather, many people naturally feel more active and optimistic. But illnesses like COVID-19 haven't gone away, and for some, the risks remain very real.

42% of people in Somerset have already been vaccinated this Spring but the virus spreads easily all year round and can be very dangerous and even life threatening for vulnerable people such as those who are immunosuppressed and those who live in a care home for older adults.

That's why the NHS in Somerset is encouraging eligible people to book their spring booster when invited and reminding families and representatives with responsibility for care home residents to return consent forms where needed.

### **Not just for older people: What does having a weakened immune system mean?**

If you live with a weakened immune system, your body can find it harder to fight off infections, increasing your risk of serious illness from viruses. Only people with specific conditions; including having had an organ transplant, undergoing some cancer treatments, or receiving long-term specialist therapies for conditions such as rheumatoid arthritis or inflammatory bowel disease; are recommended to have the COVID-19 vaccination. If you're unsure whether this applies to you, guidance is available at [www.nhs.uk/covid-vaccine](http://www.nhs.uk/covid-vaccine) or you can ask your pharmacist or GP surgery if you are unsure.

### **Support for housebound people**

If you or someone you care for is eligible for the COVID-19 vaccination and is housebound, the Somerset Foundation Trust (SFT) Vaccination Outreach Team or your GP practice will get in touch between April and the 30th June to arrange a home visit appointment. It is sometimes normal to receive a national reminder from NHS England before your local team gets in contact, but please do not worry as this does not mean you have been missed. More information is available: [https://bit.ly/housebound\\_vax](https://bit.ly/housebound_vax)

### **Giving consent for vaccinations in care homes**

If you have a loved one living in an adult care home who is eligible, the care home should be in touch with you about upcoming visits from local NHS vaccination teams. Please return consent forms as soon as possible with your decision if you have power of attorney. Care home staff can help with any questions and more information is available: [www.nhs.uk/covid-vaccine](http://www.nhs.uk/covid-vaccine).

*Rob Weaver, GP and Deputy Chief Officer at NHS Somerset, said:*

“Warmer weather sadly doesn't change the risk of COVID-19. The virus continues to circulate and for older people and those with weakened immune systems, the risk remains. Vaccination is one of the most effective ways to lower the risk of severe illness and reduce the chance of hospital admission. So please come forward when invited to avoid any delay in your protection.”

To help protect those most at risk, the NHS is offering a COVID-19 vaccine to:

adults aged 75 years and over  
residents in care homes for older adults  
individuals who are immunosuppressed aged 6 months and over

If you are eligible, you will be invited by text, email, NHS App messages or by letter but you don't need to wait for an invite. If you haven't been invited just visit the NHS website, use the NHS App or call 119 now to book your appointment.

## **New Website**

Ashbottle Parish Council is creating a new Ashbottle website [www.ashbottle.org.uk](http://www.ashbottle.org.uk)

Content will be added over the coming weeks. Please contact us through the website if there is anything in particular, you would like to see on the site.

*Paul Leyland*

## **Meadow Pasture Hay**

### **Small Bales**

### **August 2025 Cut**

Low sugar  
(5/6% Refractometer reading)  
No pesticides  
Buyer Collects

Contact Cilla Newsom  
07981 164111

**Artists always Wanted!** Do you have a painting or photograph which could be used as a cover design for the Parish News? Seasonal and local images are particularly welcome. Please send hi-res images (300dpi) to Avril at [AvrilSilk@aol.com](mailto:AvrilSilk@aol.com) Portrait format is ideal if possible.

# Stawley Community Shop & Tea Room



## Opening hours

Week day opening 8.00am to 5.00pm except

**Wednesday 8.00am to 1.00pm**

Saturday 8.00am to 12.00pm

Sunday 9.00am to 11.00am

The Tea Room will close 30 minutes before shop closure

**The Post Office is here every Thursday 11.30am to 1.30pm**

Contact us on 01823 674361 or [shop@stawleyshop.com](mailto:shop@stawleyshop.com)

---

## Come and join our wonderful team of volunteers:-

We are a friendly team of people; and being a shop volunteer is a great way to meet people and make new friends.

There are a variety of shifts available to suit individuals and volunteers can do as little or as many as they want and change their shifts each month to fit with their personal diary.

You may be thinking about a return to work and so volunteering is a good opportunity to try out a work place environment.

Taster sessions while shadowing two volunteers (to see if you think you might like it ) are available with no obligations.

Volunteers are given full training and there is always an experienced volunteer with you.

**“I really love working in the shop”**

***“I have met so many new people”***

**“I am so glad I gave it a go”** *(quotes from volunteers)*

## Consider the Lilies of the field

“Consider the lilies of the field, how they grow; they neither toil nor spin, yet I tell you, even Solomon in all his glory was not arrayed like one of these” (Matthew 6:28-29).



Lilies (*Lilium* species) are found across temperate regions of Europe, Asia, Canada and the United States also subtropical zones of India, Japan, Taiwan, Indonesia and the Philippines. The botanical name *Lilium* comes from the Greek *leirion*, referring to most likely, the pure white species *Lilium candidum* (Madonna lily) though the common name ‘Lily’ has

been used to represent a diverse number of flowers over history within literature, art and sacred text. The family consists of well over one hundred species world-wide with blooms in a range of colours, often fragrant and many marked with spots, dapples or brush-stroke textures. The majority flower from late spring onwards and most are fully winter dormant, dying back to fleshy, multi-scaled bulbs, varying in proportion from fist-sized down to blackbird’s egg or smaller, some spreading by underground runners.

### The fascination of lilies

I have always been fascinated by lilies. The first time I clapped my eyes on a stand of ‘Turk’s cap’ lilies (*Lilium martagon*) I was entranced by the colour and the fleshy texture of each bloom as it curled back its petals, turban-like, exposing anthers of red pollen on long filaments. Working in a specialist bulb nursery in the 1980s really drove that interest home, giving me the opportunity to work with many unusual species that I’d never seen before. I became, at that time, rather fixated on the finer, rarer, more expensive ‘species’ types and didn’t pay much attention to the vast number of larger, gaudier (to my eyes anyway) decorative ‘hybrids’ available. I’m relieved to say I’m not such a snob these days..

Lilies have always been prone to swings in fashion and taste; the huge range of different types available, the lucrative cut flower industry as well as extensive garden popularity mean they are the focus of breeders and hybridizers always on the lookout for the next big thing. In many ways, like Dahlias, the simple charm of older forms and species have been lost in the race to make bigger, bolder, brasher blooms! The pollen can stain your clothes and they can be fatally poi-

sonous to cats and Lily-beetle is becoming a real problem in some gardens. For some people, lilies represent death and they won’t have them in their gardens or under their roof!

But at their most sublime, *Lilium* species are perfect woodland-edge plants, mixing with other herbaceous and shrubby plants, often growing up amongst and using them for natural support. In well drained but seasonally moist, humus rich soils, they naturally form sizeable colonies and some species will seed themselves when well established. I have found that good preparation of ground, mixing in mature compost or leafmould and some blood, fish and bone meal before planting along with some grit or sharp sand if needed, pays dividends in the long term. Order your bulbs in good time to get fresh stock; de-hydrated bulbs that have been bashed and bruised in storage are the main cause of failure when planted. Plant them deeply, at least twice their own height below the surface. Many species are ‘stem rooting’ producing anchoring and feeding roots as the new stems grow up through the soil. Keep them well watered and weeded during their first season and a mulch will be beneficial.

My five favourite and most rewarding species to grow are:

***Lilium martagon* (Turks cap lily):** this species is found across southern Europe into Russia into Asia and has been grown historically in gardens for centuries. It has nodding flowers, usually purple-pink with spots and those famous reflexed petals giving that turban-like effect are borne on tall stems. White and much darker forms are found in the wild and in cultivation but in recent years numerous modern hybrids have come onto the market. Sadly, much cultivated stock available nowadays has virus infection and personally I have found it better to bulk up your own stock from seed.

***Lilium regale* (regal lily):** Originally from southwest China, this plant was introduced by Ernest Wilson in the early 1900s. It has historically been eaten in China and the original native stock is now exceedingly rare. It has large white, night scented flowers, with a yellow throat and flushed with slate-purple on the outside. A pure white form is also available (*L.regale* ‘*Album*’) and the flowers are borne on tall, arching stems of up five feet in height.

***Lilium speciosum rubrum* ‘Uchida’:** a selection of this Japanese species with gorgeous red, pink and white spotted flowers, reliable, long-lived and virus tolerant. The species originates from southern Japan and has been grown and selected since the ‘Edo’ period and was introduced into Europe

by Von Siebold in the 1830s with this form being introduced in the 20<sup>th</sup> Century.

*Lilium nepaulensis*: a most stunning species with large cream flowers with a deep maroon throat on arching stems. It has small bulbs and spreads by underground rhizomes which produce new bulbs at the tips. It prefers an ericaceous peaty-leafmold rich soil and plenty of moisture during the growing season and does best growing through and supported by other woodland plants.

*Lilium formosianum 'Pricei'*: a rarely found dwarf form of the species from Japan and Taiwan, no more than eight to ten inches tall, producing large white flushed with slate-red, trumpet-shaped, scented flowers on short stems from clumps of narrow, almost grass-like foliage. It is excellent for banks, rock gardens and front of borders, tolerates shade and prefers a cool root run where it will form large clumps. Very easy to grow from seed, flowering in three years!

*John and Julie Ridgley*

# Open Garden and Outdoor Church at Kittisford House

## Sunday July 12th

Open Garden 2.00pm til 4.00pm

Garden Entry £5



## Outdoor Church 4.30 pm

Everyone is welcome to join the congregation of Kittisford Church in this informal outdoor service to celebrate the beauty and bounty of nature

## .....and afterwards, from 6.00 til 8.00 pm

Come and enjoy delicious, freshly made, wood-fired pizzas. **£10 a pizza**. ALL Proceeds going to support St Nicholas Church, Kittisford.

**Come and join us, as you are able, at Kittisford House, TA21 0SA**

**Pizzas ONLY available by pre-order by July 10th to Paul Musgrove on [musy@cantab.net](mailto:musy@cantab.net)**

## Some deer related musings

Following a recent conversation I had with someone about a deer ‘problem’ and having read a recent article by the British Deer Society I’ve been thinking about the way deer are discussed, both locally and also on a national scale.

Various articles in the mainstream press cite deer as being too numerous and problematic and with this opinion being supported by the mythical deer population figure of two million, you have a situation where deer start to be seen as a public enemy!

These strap lines and views are then repeated over and over again and before you know it such opinions are considered fact. Rather like a lot of the current issues in the world I suspect the problem with deer numbers is far more nuanced.

Yes, there are certainly areas of the country that do have very big populations of deer – typically fallow or red deer and they do considerable damage to farm crops and woodland. However, there are other areas where deer are far more scarce.

Speaking with colleagues of mine who stalk deer regularly in Scotland for example, I hear that some grounds are overrun with roe deer and on others there is hardly a deer to be seen. Clients of mine (related to my actual day job!) who farm in Norfolk have genuine issues with large populations of Chinese Water Deer where once there were none. Additionally on Exmoor, more locally, the deer count for last year revealed a burgeoning population.

### Managing the deer population

In areas where the deer are considered as being too numerous a decent culling programme needs to be implemented to reduce numbers and keep the deer healthy and their impact on the landscape manageable.

This concept sometimes causes folk to throw their hands into the air with horror. Ironically, one of the areas where deer are too numerous and in terrible condition is the ground owned by the League Against Cruel Sports in Baronsdown near Dulverton. I’ve witnessed red deer coming off this ground in very poor condition and not well at all. This is simply because there is too big a population for the area. It’s a contentious subject and there are conflicting views on the management of deer at this site. Nonetheless, too many deer in one area is definitely a cause for concern. Too many of any species, frankly, in an area is a problem.

The point of all this is that ‘managing’ deer, in my humble opinion, is about trying to accommodate varying viewpoints and perspectives in relation to deer numbers on any given ground and most importantly to spend time observing the deer

and having some sort of idea of what deer are about, rather than simply turning the ‘deer are a national problem’ debate into a simple binary ‘yes they are’ or ‘no, they are not’ issue.

One of the most common questions I’m asked when folks find out I ‘manage’ deer on various grounds is whether I can solve their deer problem. Phrases such as “we’ve got hundreds of them and they are destroying my crops” or “the deer are ruining my garden - can you do something about it?” are very common.

Most residential gardens do not meet safe shooting requirements and often the best course of action is simply to put up some electric fencing around the prized roses - a particular favourite of roe deer!

Farmland on the other hand is generally much more straight forward to deal with. With a judicious application of local environmental awareness and decent knowledge of what deer are about, it is possible to have deer and happy land owners.

Cull plans/management plans take a while to set up but are definitely worth the trouble of sorting out. Actually, if the land holding is big enough there are now grants to help with this. The important consideration though is to view the deer as part of our environment rather than as a bunch of random aliens sent to plague everyone or Bambi who can do no wrong!

Finally, in closing, please be aware that most of the local deer species will have been having this year’s young from mid May until mid June. Often the Mums will leave their new kids/fawns in long grass on woodland edges whilst they go off to feed. These youngsters are not orphans waiting for a kind hearted walker to rescue them. Should you be out and about and spot the youngster, the best policy is to quietly go past it as the Mum won’t be far away.

As ever, any questions please feel free to drop me a line.

*Antony Weeks*

### Rainfall Statistics (inches)

#### April 2026

2022	2023	2024	2025	2026
1.42	3.54	2.83	2.76	0.63

April’s rainfall, or the lack of it, demanded another dig into the old records. Mercifully, spreadsheets make this process easy.

April 2011 recorded 0.38 inches and April 2007 provided 0.51. inches. Here’s to some downpours in May!

*Val Coots*

# Sir Willard White

## and the Brodsky Quartet

**Music by:**  
Copland  
Kern  
Gershwin  
Britten  
Schubert

7.30pm Thursday 11 June  
St Andrew's, Wiveliscombe

Tickets £12-£28  
To book: [wellhayes.uk/white](http://wellhayes.uk/white)  
or 01398 361612

**Wellhayes**  
For Wine and Music



---

## GARDEN MAINTENANCE

LAWNS · HEDGES · BORDERS

---

CONTACT ALEX ON:  
07854680335  
HELLO@AWGARS.CO.UK

AWGARS.CO.UK



### *Bee Yourself*

#### *Beespoke Care and Support at Home*

A friendly, professional service, offering-  
Home Help, Companionship, Meal Preparation,  
Personal Care, Light Cleaning, Pet care,  
Overnight Care – Sleeping or Waking  
(Respite only)

Reading, Activities, Palliative and End of Life  
Care.

Fully Insured, Enhanced DBS,  
Micro Provider registered in Somerset.  
Helping you to stay independent



### KINGDOM GUITARS

REPAIRS · SETUPS · MODIFICATIONS

Whether it's a quick string replacement, a minor adjustment to your action, or a simple tweak to improve your guitar's tone, we approach every task with the same dedication and care as a full restoration.

For more information on our services and a free quotation, feel free to contact us.

07724338853  
patrick@kingdomguitars.uk  
www.kingdomguitars.uk

### **Jo Clarke** FHT ITEC IHBC APNT





Holistic Therapist with 30 years experience.  
Massage, Myofascial Release, Aromatherapy  
Vibrational Healing, Reiki Healing.

My focus is on the holistic approach to health and healing, to look at each person as a whole not just at the symptoms present. My aim is to improve physical health and mobility, whilst also facilitating deep healing on an emotional, mental and spiritual level

I look forward to welcoming you to my beautiful therapy centre set in the peaceful Somerset countryside, near Stawley and Ashbrittle.

**For Appointments: Call or WhatsApp/text  
07929 378534 or  
Email: [shumwood.therapy@gmail.com](mailto:shumwood.therapy@gmail.com)**

All for  
 Dog Training  
&  
Woofs Behaviour

-  Reward based methods
-  Accredited Trainer
-  121 Sessions
-  Group Classes

-  [allforwoofs.co.uk](http://allforwoofs.co.uk)
-  [allforwoofs@gmail.com](mailto:allforwoofs@gmail.com)
-  07749 261 772



## The Bowen Technique

Kate Weeks cert ECBS MFHT MBTPA  
Muscle and Fascia release.

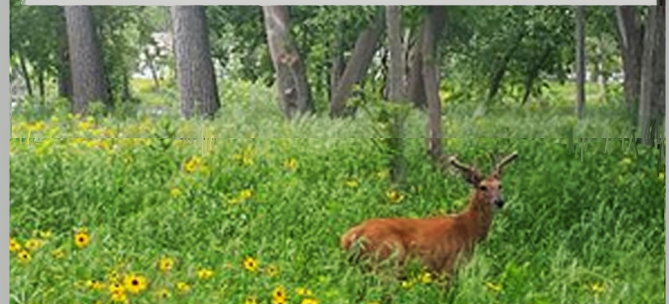
A gentle, intelligent approach to treating a wide range of muscular skeletal and systemic issues, including;

Back pain, neck pain, shoulder problems, headaches/migraines, TMJ problems, bursitis, fasciitis, SPD, pelvic issues and infant colic to name but a few.

Safe for all age groups and during pregnancy.  
Bowen specialist with 20 years experience.

Clinics held at The Terrace, Taunton.  
01823 338968/07721 462096  
[kateweeksbowen@btinternet.com](mailto:kateweeksbowen@btinternet.com)

  
**OLD MAN OAK**  
THE OLD MILL TRACEBRIDGE WELLINGTON SOMERSET TA21 0HG  
07753 814553



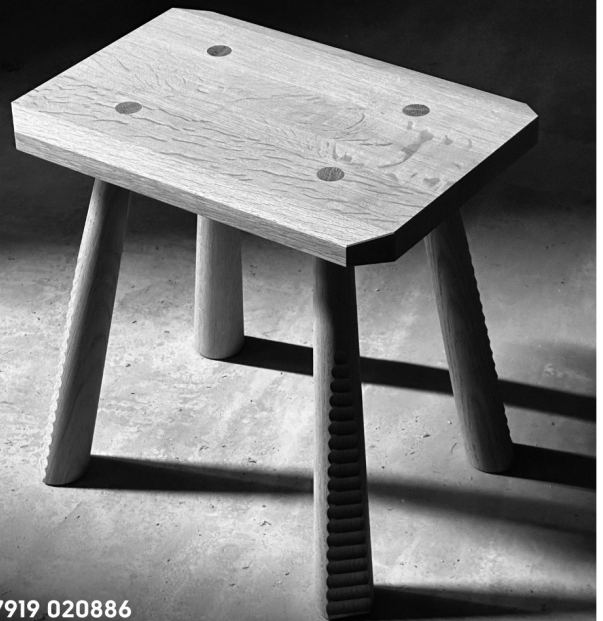
**VENISON FOR SALE**  
MINCE, DICED, STEAKS, JOINTS  
All naturally harvested!  
Bespoke orders fulfilled too - just call me to ask.  
If you'd like to go on the Whatsapp group, please let me know. Ant.



## FURNITURE MAKER

MICHAEL COOPER STUDIO

Traditional fine woodworking.  
Designed and crafted to commission.



07919 020886  
[hello@michaelcooper.studio](mailto:hello@michaelcooper.studio)

## HOLYWELL ANTIQUES & LICENSED TEAROOMS

THE HOLLOWAY, HOLYWELL LAKE, WELLINGTON, TA21 0EJ  
01823 976551/07710265605  
OPEN THURSDAY – SATURDAY  
AND THE FIRST SUNDAY OF THE MONTH  
9.00 – 4.30



We are a small Antiques Centre with a licensed Tearooms and a lovely garden for you to sit in and relax. We welcome dogs in the snug or garden and we have a large car park. We also do TakeAway Tea/Coffee and Cakes  
Email [nickyjane2435@yahoo.com](mailto:nickyjane2435@yahoo.com)

## Cleaning and Home Help

One off or regular jobs

General cleaning

*My cleaning products or yours*

*End of tenancy cleaning*

*Help with shopping*

*Dog walking*

*And much more*

References  
available

Call Sarah on  
07772 761677



## D J Stradling Electrical Your local electrician



Contacts:

Dave Stradling, Proprietor

Tel 07758 230434

or email [davestradling5@gmail.com](mailto:davestradling5@gmail.com)

Whiteoaks, Langford Budville,  
Wellington TA21 ORB

## Home & Garden Services



### Emma

#### Are you finding yourself:

- 'Struggling with the juggling'?
- Needing someone experienced with a wide range of physical, mental and neurological health issues and sensory loss?
- Or are things just starting to seem more difficult these days?

#### Here is what I have to offer you:

**Home:** Spring cleaning, Ironing and One off. Food Prep

**Garden:** Maintenance, Allotment, Clearance

**Supporting your independence:** taking care of jobs that are getting tricky or empowering you to overcome the barriers yourself!

**Decluttering & sorting:** sensitively supporting you to make your own choices

**Admin and Computer Work:** organising and dealing with a whole range of tasks or helping you make better use of your computer/device

**Emma Hurford**

**Living Well – Support, Home Help and Relief Care**

[indianamaish@hotmail.com](mailto:indianamaish@hotmail.com) 01823 672003

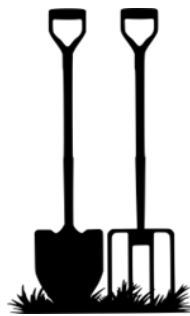
**DEVANEY CONSTRUCTION  
GREENHAM, WELLINGTON  
CARPENTRY AND JOINERY**

- DOORS
- FLOORS
- KITCHENS
- ROOFING
- ROOF REPAIRS
- DECKING
- FENCING
- GARDEN STRUCTURES
- PROPERTY MAINTENANCE

PHONE: 07594 024232 or  
EMAIL: [Shanedevaney33@outlook.com](mailto:Shanedevaney33@outlook.com)

**Garden  
Maintenance**

Jon Geary  
Laurel House, Ashbrittle  
07790 762154  
[jon\\_geary@hotmail.com](mailto:jon_geary@hotmail.com)



**Kim White D.O.**

**Registered Osteopath**

**Freathingcott Farm, Holcombe Rogus,  
Wellington TA21 0NG**

**For appointments please contact the practice on:**

**01823 672925**



*Sympathetic repair and restoration of historic buildings*

- \* HISTORIC BUILDING CONSERVATION AND RESTORATION SPECIALISTS
- \* TRADITIONAL LIME RENDERING, POINTING AND INTERIOR PLASTERING
- \* STONE CONSERVATION AND MASONRY REPAIRS
- \* FAÇADE RESTORATION AND PAINT REMOVAL SYSTEMS
- \* ROOFING AND LEADWORK
- \* TIMBER WINDOW REPAIRS
- \* TRADITIONAL CARPENTRY AND BESPOKE JOINERY
- \* KNOWLEDGE AND EXPERIENCE OF WORKING ON ALL FORMS OF LISTED BUILDINGS, INCLUDING ECCLESIASTICAL

[www.thewessexconservationco.co.uk](http://www.thewessexconservationco.co.uk)  
info@thewessexconservationco.co.uk  
George Hannon: 07727 177467  
Will Stevens: 07815 464908  
14 George Street, Wellington, Somerset TA21 8JA



*Our company is accredited by the guild of master Craftsmen, this means we will abide by their code of practice so you can be assured of the highest quality of workmanship at a reasonable price, giving you complete peace of mind at all times.*

## Home Aerials

**Tel: 01984 623232**

**homeaerials@gmail.com**

All Types of Aerials and Satellite  
Digital Upgrade Specialists  
Digital Boxes Supplied and Fitted  
Wiveliscombe & Surrounding Areas  
Local, Reliable, Experienced Engineer

**Contractors for Local Authorities  
and Housing Associations**

**A Family Run Business  
for over 39 years**

**Please contact Lulu or Martin Milton**

*Blue Shed Flowers*

**Beautiful flowers - grown locally and  
sustainably**

Local gift bouquet delivery and  
flower subscriptions  
(March – November)

Natural Farewell flowers

Weddings and Events

Flower workshops, demonstrations and talks

Contact Jan on 07525948053 or for more  
information or visit:

[www.blueshedflowers.co.uk](http://www.blueshedflowers.co.uk)

# PHILLIP HUMMEL PLUMBING & HEATING

All domestic plumbing work undertaken.  
Oil Boiler service and installation.  
Oil Aga / Rayburn Service.  
Oil tank service and installation.  
Bathroom design and installation.  
Bathroom and Kitchen Tiling.  
Underfloor heating installation.  
Unvented hot water cylinder installation.



Insured and registered oil heating engineer with OFTEC.

Clean, tidy and polite; references are available if required.



For more information please contact  
Phillip Hummel

Home Telephone number. 01823 652782  
Mobile telephone number. 07456668530  
Email [philliphummelplumbing@gmail.com](mailto:philliphummelplumbing@gmail.com)

## H Tredwin & Son Ltd

**Independent Funeral Directors**  
**15 & 17 North Street, Wellington**



Providing a proficient, personal and caring  
service at **all** times.

Fifth generation independent family business

Private chapels of rest

Pre-paid funeral plans

[www.htredwinandson.co.uk](http://www.htredwinandson.co.uk)

Contact Nick or Louise Tredwin: Telephone: 01823 672287

Mob: 07702 726264



ORCHARD MYOFASCIAL

**Do you suffer from chronic pain, tension or restricted movement?**

Myofascial Release offers a gentle yet powerful way to return to a state of balance.

Through slow, sustained pressure, this treatment works with the fascia - the body's connective tissue - helping to restore natural alignment, and bring lasting ease back to your body.

For more information visit:

[www.orchardmyofascial.com](http://www.orchardmyofascial.com)



## Wanted



Standing hardwood: Oak, Ash, Beech etc

**TOP PRICES PAID**

*Call Carl Westcott*

**07973564759**



Tel: 01823 672900 Ltd



**Household bin  
full, give us a call!**



We also supply:

Dumpy bag service – you fill, we collect!

Any amount and any grade of crushed concrete including delivery if required.

2, 4, 6, 8 & 12 cu skips.

20 & 40 cu Roll On Roll Offs.

Grab hire available to collect your awkward waste.

Asbestos disposal available.

**Wasteology Ltd is not limited to council schedules, our only schedule is yours!**

# Anthony James

Dip F.D., MB.LE., MB.LFD.

## Funeral Director

A Dedicated Family Business

24 hours, 7 days a week

Caring Personal Service

Private Chapels of Rest

Golden Charter Pre Payment Funeral Plans



Telephone: 01984 624149

Broad Meadow View

West Road

Wiveliscombe

TA4 2TB

**Golden Charter**  
Funeral Plans

[www.tauntonfuneralservice.com](http://www.tauntonfuneralservice.com)

[tfstauntonwivey@aol.com](mailto:tfstauntonwivey@aol.com)

Taunton Funeral Service

55 Bridge Street

Taunton

TA1 1TP

Tel: (01823)

321077



# A.J. WAYGOOD PAINTER & DECORATOR

**FREE QUOTATIONS  
ALL ASPECTS OF DECORATING  
FRIENDLY & RELIABLE**



**Checkatrade.com**  
Where reputation matters

TEL: **07552445388**

EMAIL: **AJWAYGOOD@HOTMAIL.COM**

WEB: **WWW.WAYGOODDECORATING.COM**

## GB BUILDING & MAINTENANCE

Listed Building Specialist

\*Lime Plastering

Internal/External

\*Cob Repairs

\*Lathe and Plaster

\*Stonework

\*Cut Roof, Green Oak etc.

Contact Gary Broom

Telephone 01823 283212

or Mobile 07776032289

# WIVEY HARDWARE

10 WEST STREET  
Tel: 01984 624268

Tools, Electrical Goods, Paint & DIY,  
Kitchenware, Cookware, Seeds, Compost,  
Garden Accessories, Camping Equipment,  
Wickerware and key cutting service

Monday – Friday 9 am – 5 pm Saturday 9 am – 3 pm

## BURROW



Septic Tank Owners  
register your interest  
in a fully-funded upgrade

Due to the Phosphate pollution in your local river catchment we are operating a septic tank replacement scheme using private funding.

We install wastewater treatment plants that remove almost all pollutants, with funding secured from planning applicants who need to create a positive impact on the environment.

Register on our website today.



burrow-environmental.com 01935 507 508

## SORTED MOTOR SERVICES

Vehicle repair and maintenance services based in Wellington.

- Routine servicing, tyres and brakes
- MOTs and seasonal health checks
- Clutch and gearbox replacements
- Diagnostic reports and Auto electrics

Let us help to get your car SORTED!

Call us today on  
**07727 356728**

info@sortedmotorservices.co.uk  
sortedmotorservices.co.uk

Unit 3B, Westpark, Wellington Somerset TA21 9AD

FRIENDLY RELIABLE AND TRUSTWORTHY TEAM

### KEY'S CLEANING SERVICES

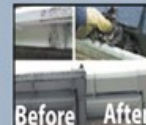
Find us on  
facebook.

INSIDE & OUTSIDE WINDOW CLEANING

- We clean all windows inside and outside plus sills & frames
- Skylights, solar panels etc and any type of roof
- Regular and one off cleans

### JJK GUTTERING SERVICES

- We empty and clean all types of gutters, fascias, soffits, conservatory roofs etc and unblock downpipes



FAMILY  
RUN  
BUSINESS



PLEASE CALL FOR A FREE QUOTATION  
**07885 451628 07877 670482**  
**WWW.KEYSCLEANINGSERVICES.CO.UK**  
Email: kevs cleaning@btinternet.com



THE COTTAGE BEYOND - SLEEPS 14+2  
HOLIDAYS, REUNIONS AND CELEBRATIONS

## Accommodation at Kittisford Barton Farm



YONDER VIEW - SLEEPS 2+2  
LUXURY CONVERTED SHIPPING CONTAINER



[www.thecottagebeyond.co.uk](http://www.thecottagebeyond.co.uk)  
07843529072



**WIVELISCOMBE JOINERY LTD.**  
Quality Traditional Joinery

**Contact Rob Hill**  
**07845 756822**

[wiveliscombe.joinery@outlook.com](mailto:wiveliscombe.joinery@outlook.com)



## Stunning Village Hall for hire in Waterrow

A superb venue available for parties, weddings, funerals etc. can seat eighty in the hall with additional outside space

Facilities include an excellent fully equipped kitchen, large hall with a stage, meeting room and plenty of outdoor seating potential

Part day from only £30.00, whole day  
from just £90.00

For booking information or  
further details,  
please visit our website at  
[www.waterrow.org.uk](http://www.waterrow.org.uk)  
Or ring Liz on - 01984 623431

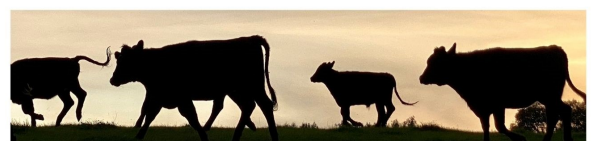


## Organic Dexter Beef from Kittisford Barton Farm

**£140 - 10kg Beef Box**  
to include a mix of:

- topside and roasting joints
- fillet, sirloin and rump steaks
- mince, stewing steak, braising steak and brisket

PLEASE GET IN TOUCH FOR ORDERS.  
FROZEN BEEF SOMETIMES AVAILABLE.  
WAITING LIST FOR FUTURE FRESH BOXES.



To reserve your box please speak to  
John - 07872 971328  
[kittisfordbartonfarm@gmail.com](mailto:kittisfordbartonfarm@gmail.com)

**FOR LOCAL  
CARDS, PRINTS &  
PAINTINGS**

Annie Musgrove  
Meadow Farm  
Greenham  
TA210JW  
[www.anniemusgrove.co.uk](http://www.anniemusgrove.co.uk)  
[amusgrove@cantab.net](mailto:amusgrove@cantab.net)



**DAVID PEARCE**



**MANUFACTURER & STOCKIST OF  
BEE-KEEPING EQUIPMENT**

*Hives and Frames*

Haddeo, Bathealton, Taunton TA4 2AG  
Tel: 01984 623851

**Willowbrook Nursery  
and Garden Centre**

Your local family-run Garden Centre  
Well stocked garden shop

Café and Tea room      Bow Aquatic Centre  
Pet and Bird Supplies      'Winesolution' Wine shop  
Sheds      B & M Camping

Situated on the A38 between Taunton and Wellington  
Telephone: 01823 461324 \*Open 7 days a week  
[www.willowbrooknurseryandgardencentre.co.uk](http://www.willowbrooknurseryandgardencentre.co.uk)

**Janet Morris**

Freelance Stylist  
Gents, Ladies and Children



For an appointment or consultation please call:

**07768648244**

or email [Janet\\_Morris63@outlook.com](mailto:Janet_Morris63@outlook.com)

**IN SAFE HANDS**



**Home and  
Animal Sitting**

ARABELLA STEVENS

Combe St Nicholas, Chard, Somerset TA20 3NG

**07926 174 332 • [sastevens@uwclub.net](mailto:sastevens@uwclub.net)**



**DEVON FENCING**

BY SRF TREE SPECIALISTS

ALL TYPES OF AGRICULTURAL  
AND DOMESTIC FENCING

Call Sean on:  
07774 218349  
01823 672765

[www.srftreespecialists.com](http://www.srftreespecialists.com)



**FLUETOPIA  
CHIMNEY SWEEP  
SERVICES**

Open Fires/Woodburning Stoves/  
AGAs and Rayburns/Rain/Bird  
guards fitted

Paul Cronin Mob: 07980 743192

**LOGS+TREE  
SURGERY**

- dry, seasoned logs
- large or small quantities
- cut & split as required
- tree care, felling & lopping
- plant & trailer hire



**Carl Westcott**  
m: 07973 564759

We are proud to print the Parish News

**SharperPrint**

**Clearly competent : Low cost in our DNA :**  
**Service without compromise**

If you want to get something printed - anything  
printed,

Give us a call or send us an email  
For a free quote and advice  
Tel: 07906 752190

## Defibrillators in our Community

### Would you know what to do if someone in your household had a Heart Attack/Cardiac Arrest?

Sudden cardiac arrest is a leading cause of premature death. In cardiac arrest the heart's steady rhythm is often replaced by disorganised electrical activity called ventricular fibrillation (VF). The sooner VF is treated by an electrical shock (defibrillation), the greater the chance of the person's life being saved. Immediate action by members of the public can save many lives.

**DIAL 999 FIRST**

**But, there are four defibrillators within our community which are easy to use with verbal and visual instructions and available to anyone. They are permanently located at these places and can be found using the // What3words codes below.**

**Ashbrittle Village Hall**, on the outside wall.  
*blurts/flats/crouching*

**Bathealton Village Hall**, on the outside wall.  
*relatives.widgets.rolled*

**Kittisford, New House Farm**, on the wall opposite the church.  
*bonkers.regime.lyricist*

**Stawley Village Shop**, on the outside wall  
*messaging.servers.quaking*

Each one can be removed and taken to where it is needed. **These are all accessible 24 hours a day and no access codes are required.**

## Editorial Policy

Please note that the views expressed in this magazine are the responsibility of the individual author(s) and are not necessarily the views held by the editors of the Parish News.

## Local information

**Police Beat Team** PCSO Brianna Whelan  
Tel: 07761 405460 or email:  
*brianna.whelan@avonandsomerset.police.uk*

### Parish Councils

**Ashbrittle - Chairman** Charles Doble 01823 672365 or 672618  
email: *charles@greenandcarter.com*

**Bathealton - Chairman** Philip Broad 07584 657106  
email: *philip.broad1@outlook.com*

**Stawley - Chairman** Paul Musgrove 0793 934 7891  
email: *stawleyipc@stash.org.uk*

### Somerset Councillors

Cllr Dave Mansell – 01984 623823 or email:  
*dave.mansell@somerset.gov.uk*

Cllr Gwil Wren – 01823 400657 or email:  
*gwil.wren@somerset.gov.uk*

### Community Halls

#### Appley Pavilion and Recreation Field

– to book, call 01823 672266 or email:-  
Lucy Williams *info@appleypavilion.co.uk* or book  
online at <https://appleypavilion.co.uk>

#### Ashbrittle Village Hall

– to book, ring Pat Gainey on 01823 672760  
or 07713 276656

#### Bathealton Village Hall

– to book, ring Tilly Willis on 07961 970743

### Local Groups

#### Stawley under Fives at the Appley Pavilion.

Becky Alder Pre-schools Manager - Swallows,  
Sampford Arundel 01823 672342 Mon/Tuesday.  
Stawley Under Fives 07707 416871 Weds/Thurs/Fri

## Parish News information

**The Editors and the next issue deadline date are on the back cover.** Please send items for publication to the Editors in good time to ensure publication. There is only a short time between the deadline and the printing of the Parish News and late items may not be included. Please send items for publication by email *ashparishnews@gmail.com* preferably as attachments in Microsoft 'Word' format.

**Advertising** Our rates are £2.00 per month for a small box, £4.00 for a quarter page, £8.00 for a half page and £16.00 for a whole page. Advertising for community events, charity and church fundraising events in our area are normally carried free of charge. Occasional one-off adverts from residents in our area seeking to sell or buy an article or seeking to acquire or offer a service are also carried free of charge. In all cases the style, layout and size allocated to an advert is at the discretion of the Editors.

**Editors:** Maurice Stanbury 01823 672216 and Avril Silk 01823 672131; e-mail address:  
*ashparishnews@gmail.com*

**Treasurer:** Pat Sweet, Winkleigh, Stawley, Wellington TA21 0SA Tel:01823 672380 or 07714 545906  
**Bank details:** Account Name: The Parish News, Sort Code: 30-98-45. Acc. no. 01828373

**Distribution:** Pat Sweet 01823 672380 or 07714 545906

## DATES FOR YOUR DIARY

### June

1st	12.00 - 2.00 pm	'Pop-up cafe' in Bathealton Village Hall
3rd and 17th	10.00 - 12.30 pm	Books, Biscuits, Coffee and Cakes at Stawley Mill
6th	2.00 pm	Stawley Church Garden Party and Fete
6th and 7th	11.00 am - 4.00 pm	Wivey Secret Gardens for Wivey Cares
20th	10.00 - 12 noon	Coffee, Cake and Chat in Ashbrittle Village Hall
20th		Walk West Tone 2026    Details at <a href="http://westtone.org.uk/walk">westtone.org.uk/walk</a>
25th	12 noon	Lunch Club in Ashbrittle Village Hall

### July

11th - 18th		Summer Exhibition at Greenways Studio, Ashbrittle
12th	From 2.00 pm	Open garden with pizzas and outdoor service at Kittisford House.

### September

6th		Stawley Flower and Produce Show
-----	--	---------------------------------

### October

11th		Apple Day at Appley Pavilion
------	--	------------------------------



### The Ashbrittle, Stawley and Clayhanger Under 11's Cricket Team

Front Row (left to right): Tom K, Lenny A, Tom H (Captain), Finley W and Jai. P

Back Row (left to right): Reef H, Zac K, Jax R and Dylan. L

The boys made an excellent start to their season - see report on page 6.

**Next Deadline Date:    Friday 19th June 2026**

**Editors: Maurice and Avril**