

ASHBRITTLE GREENHAM STAWLEY BATHEALTON KITTISFORD



Parish news

June 2025

For the Parishes of ASHBRIITLE with GREENHAM, BATHEALTON, STAWLEY and KITTISFORD

Church Services**Sun 1st June**

9.30am	Holy Communion Service	St. Michael's, Stawley
11.15am	Sung Eucharist Service	All Saints, Rockwell Green
11.15am	BCP Communion Service	St. John the Baptist, Ashbrittle

Tue 3rd June

7.00pm	Archdeacon's Visitation	St Michael's, Milverton, TA4 1LR
--------	-------------------------	----------------------------------

Sun 8th June Pentecost

9.30am	Baptism and Holy Communion	Holy Cross, Sampford Arundel
11.15am	Sung Eucharist Service	All Saint's, Rockwell Green

Sun 15th June Fathers' Day

9.30am	Baptism and Holy Communion	St. Nicholas', Kittisford
9.30am	Morning Service	St. Margaret's, Thorne St. Margaret
11.15am	Sung Eucharist Service	All Saints, Rockwell Green

Sat 21st JuneWalk West Tone **A Day for everyone in the community** *see page 13.***Sun 22nd June**

9.30am	Holy Communion Service	St. Bartholomew's, Bathealton
11.15am	Sung Eucharist Service	All Saints, Rockwell Green
6.00pm	Evensong	Holy Cross, Sampford Arundel

Thu 26th June7.00pm Church in the pub The Globe Inn RSVP welcome@westtone.org.uk**Sun 29th June**

9.30am	Benefice Holy Communion	St. Peter's, Greenham
--------	-------------------------	-----------------------

Churchwardens and Clergy**Ashbrittle with Greenham**

Charles Doble, The Old Rectory, Ashbrittle, TA21 0LQ	01823 672365
David Hanks, Manley House, Ashbrittle, TA21 0LE	01823 672436

Bathealton Sarah Eustice, Oakwood, Spring Grove, TA4 1NL 01823 401248**Kittisford** Annie Musgrove, Meadow Farm, Greenham, TA21 0JW 01823 672627**Stawley** Penny Hare, Stawley Mill, Wellington, TA21 0HT 01823 672183
Colin Haddrell, Tucks Farm, Stawley, TA21 0HS 07974 804990**Priest-in-Charge**

Reverend Andrew Barton, 2 White Oaks, Langford Budville, TA21 0RB

Contacts: Home/Office - Phone 01823 924007 or 07795 699737

*Email revdbarton@gmail.com***Artists Wanted!** Do you have a painting or photograph which could be used as a cover design for the Parish News? Seasonal and local images are particularly welcome. Please send hi-res images (300dpi) to Avril at AvrilSilk@aol.com Portrait format is ideal if possible.**Front cover** - 'Teasing it to rain' - from Greenham, looking towards Appley.
Photograph taken by Frank Colebrooke.

Thought for the Month

Rogationtide

A happy crowd of fifty or more people gathered on the lawn of Kittisford House in May to celebrate Rogationtide. Less well known than harvest, its sister season in the autumn, it is no less important. Earlier in the agricultural year some would have come together to celebrate Plough Sunday, as the farmers laid the first seeds. Rogation is an opportunity to offer thanks for the first fruits of that early labour.

Traditionally during Rogationtide prayers are said for the blessings of the earth and early crops, our farms and all who live and work there and for the wider community they serve. The community who came together at Kittisford House had gathered therefore to celebrate the beauty and bounty of nature and to appreciate those who work in it for our benefit.

Through music and song, readings and drama, we shared our gratitude for the blessings of the earth and those who tend the countryside. We were mindful of the need to preserve its order and beauty, along with the traditional rural skills and crafts that are exercised within it. It was good to see the faces of those from our local farms, who were keen to see favourable weather with temperate rains and fruitful seasons.

Celebrating Rogation offers also the chance to consider the wider community, the homes of our parishes and all who live within them. We share a common life in this stunning part of the world, and we wish to live with care both for it and our neighbour.

A startling fact came to light when someone shared the importance of supporting the bee population, and pollinators more generally. The quote that sparked discussion was "If the bee disappeared off the surface of the Earth, humanity would only have four years left to live". The interconnectedness of the natural world calls us to make all reasonable efforts to work together to provide for a sustainable future, for everyone.

During our time together we considered if creation is a gift to us, then who is the giver? The poet Ingrid Goff-Maidoff once wrote "God spoke today in flowers, and I, who was waiting on words, almost missed the conversation".

Perhaps next time any of us are travelling through, or sitting still within, our rural haven, we could choose to listen. To observe. To receive. And as we set off on our way again, do so with gratitude and care, for the land, for those who work it, and for the faithful providence it demonstrates.

Revd Andy Barton

A Royal invitation

On May 14, 2025, King Charles III and Queen Camilla hosted the second garden party of the year at Buckingham Palace in London. The event celebrated individuals from the education and skills sector and Jacqui Collier, Executive Head of Stawley and Sampford Arundel Primary Schools was honoured to be invited.

She writes:

To walk through Buckingham Palace gates and into the area outside the palace was truly an experience to remember.

Once we entered the gardens the military bands could be heard and the tea tent was quickly identified. Predictably, cucumber sandwiches were readily available alongside a host of tiny cakes, tarts and pastries.

It became apparent that the King and Queen were due to arrive when a group of Yeoman Warders or Beefeaters appeared at the top of the steps outside the palace and both military bands together played the National Anthem.



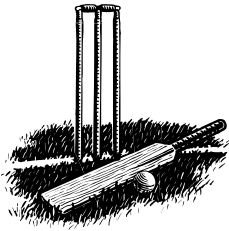
A privilege to meet Queen Camilla

Both King Charles and Queen Camilla then walked down dedicated avenues of space greeting the crowds. I was extremely fortunate to be able to see the Queen very closely and then the King. It was a true highlight of a career in education and a recognition I never expected to receive.

However, this was also a spectacular opportunity to lobby a senior member of the Department for Education about the proposed plans for Stawley Primary School. The current plans only include two classrooms for a school which is running a three-class structure very successfully. I took this opportunity to highlight our cause.

To be able to go to such a fantastic event was the privilege of a lifetime and I really want to take this chance to thank all our families, community members and neighbours for their supportive messages. The amount of support our tiny school receives is absolutely unprecedented and makes Stawley Primary School a truly unique place to be.

Jacqui Collier



Ashbrittle, Stawley and Clayhanger Cricket Club

A mixed start to the season:

The 1st XI have finally played a game of League Cricket after a cancellation resulting in maximum points for us, followed by a gap week for the Pavilion Birthday Celebrations. They convincingly beat Morebath to show their intent on defending the title this season. Mostly thanks to Luke Williams' 111, we took another 35 points!

The 1st XI have unfortunately found themselves out of the Minor Cup, and Baker Cup so far. An agonisingly close loss to Minehead 1st XI was something to be very proud of. Ollie White was just two balls away from completing a magic final over which included two wickets in two balls, but we unfortunately couldn't quite get over the line.

The 2nd XI have had a good start to Division 3, beating the Minehead 3rd team, with Chris Hill scoring his first one hundred for the club. They also beat Buckland St Mary in the Stuart Albutt Cup thanks to Carl Westcott's unbeaten seventy three runs

However, they did lose to Hemyock in the league, with Hemyock taking advantage of winning the toss on a difficult wicket, making home advantage count.

Sponsor's day.

We are holding a 'Sponsors Day' on the 28th of June. The 1st XI are playing Kilve at home. We will have a Cider Tent courtesy of Loaders Cider, and it would be great to see some of the village not only come to support the club, but enjoy a day of watching cricket with some Cider, in the sun (fingers crossed!).

Callum Hamer

Appley Pavilion and Cricket Club 'Big Breakfast'

Thank you to all who supported the above event on Sun 27th April Your support is always very much appreciated and raised £520 which helps towards the running costs of both groups.

Also, a big thank you to all the helpers who took it in turn to make sure the breakfasts went out efficiently!

Suzette Williams

Quaker Meeting for Worship

Spiceland Quaker Meeting Uffculme
EX15 3AZ

We Meet for Worship at Spiceland
every Sunday at 10.30am till 11.30am
also available on Zoom -

Meeting ID:865 5570 2735 Passcode:
498173

All are very welcome.

Rainfall Statistics (inches) for April 2025

2021	2022	2023	2024	2025
0.71	1.42	3.54	2.83	2.76

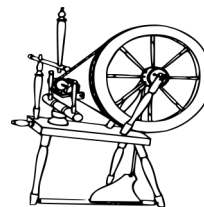
Val Coots

Bottles Wanted!

For the now famous Bottle Tombola
@ **Stawley Fete on June 7!**

Any contents, any size, but the more
the merrier!

Please leave at Stawley Shop - thank you!



Spinning and Woolcraft Group

A twice-monthly get-together at a member's
house for textile crafting, chat and a cuppa

Perhaps you would like to learn to spin with us?
Or bring along your knitting, crochet or other
needlework project

All welcome

If you would like to join us, please contact me
and I will add you to the mailing list.

Next Sessions

Tuesdays: 3rd and 17th June
1st and 15th July
at 2.30pm

Contact Pauline on 01823 672222 or
email pjw200355@gmail.com

Stawley Church

Garden Party and Fete



Stawley Mill

TA21 0HT

2pm Saturday 7th June

Plants, Cakes, Bottles, Books, Raffles and Bric a Brac

Cream Teas and Strawberries

£1 Entrance

All proceeds to the Church

The PiP - a local invention - goes national in the NHS

Nick Burns-Cox, a consultant urologist at Somerset NHS Foundation Trust, has invented a brand new way of collecting urine with a 'Pee in Pot' (PiP) – made from biodegradable pulp, rather than plastic. The invention, which was developed in close collaboration with Steve Swan of Blade Innovations, has taken ten years of tests, prototypes and studies to get right and is now available for NHS organisations across the country.

Nick, a resident of Kittisford, will already be known to many of our readers, while Steve was a resident of Appley until some three years ago and a very active member of the local community.

Here is their story, as told to the Parish News. First, Nick explained how it all began when he was running a clinic in the outpatients department at Chard Community Hospital, and needed to test a patient's urine to check for an infection.



Nick Burns-Cox (centre) holding a PiP, together with a team of nurses who trialled and approved the final design.

The ward manager asked me how she was supposed to get a urine sample from a patient into the 10ml urine collection tube the labs needed, which is about as big as your finger.

In order to get the urine into the 10ml tube, we were asking patients to urinate in a sterile bowl, which was then syringed into a 30ml tube, sent to the lab, with a laboratory technician then needing to pipette the urine into a 10ml plastic tube for analysis. Looking back at the way we were doing things, it was messy, with many different colleagues using lots of different containers to get the urine in the right sized pot to go to the labs, and was very time consuming for colleagues.

Alongside that, every time we handle a urine specimen we increase the risk of human error, whether that comes from mislabelling a sample as we change containers, or through accidentally introducing contamination. If that happens we need to repeat the whole process again.

Not only was it wasting time, but it was wasting materials. Lots of single use plastic was being used for every collection. I recognised the problem and knew we needed to make something that was fit for purpose and better for our environment.

Seeing the problem made me think there must be a far better solution. I spoke with my neighbour, Steve Swan, who had the initial idea of a built-in funnel, which then evolved into the first prototype of the PiP. We continued developing prototypes until we finally had a pot that not only provided a more sustainable way of collecting urine, but has a series of sections built into it, meaning that nurses and health care assistants can measure out the 10ml of urine that they need to get it into the right tube without any other products or procedures needed.

Much more efficient, less wasteful of materials and much less likely to introduce an accidental error.



Steve Swan, the collaborating partner in the design and development of the PiP.

With any invention, it is essential, at the start, to identify the exact problem that needs to be solved. So many ideas seek solutions to things that are not really a problem. Of the nearly four million world-wide patents, only 3% have ever become commercial products.

Nick clearly identified the problem. How to get 10ml (two teaspoons full) of urine from a bowl with a sample of some 300ml (a mugful), but without multiple stages of decanting from one vessel to another, involving single use plastics and staff time, to finally get the sample into a 10ml test tube?

My initial sketches envisaged a spout on the original larger bowl for pouring directly into the test tube. However, handling a mugful of liquid in this process was not easy, so the next task was to develop a way to discard the majority of the liquid, retaining the correct amount in the bowl to go into the test tube. The first design was a compartment in the base of the bowl, which by tipping the bowl one way discarded the majority and tipping the opposite way, discharged the 10ml, via the spout into the test tube. I identified that this design could not actually be made by the pulp manufacturing process. The next iteration was a two compartment bowl, incorporating angles, where the 180 degree alternative tipping process, would discard the majority of liquid and retain just 10ml.

Ten years to bring to fruition

So how can it take so long to bring an invention and design to market? Strangely, the idea is relatively the easy part. The design development is the next longest process.

I began with papier-mâché models. An NHS supply partner was already providing grey pulp bowls, but was keen to promote a new white pulp,

called bagasse, made from sugar cane waste and bamboo. The high temperature moulding process, provided a much greater degree of sterility than grey pulp.

Having achieved an early prototype in bagasse, we then faced a long process of ward trials within Musgrove Park, infection control testing, obtaining medical approval of the product, patient feedback, minor modification to the design, gaining intellectual property rights, manufacture, writing instructions for use, graphic design of the packaging and design of the dispenser to be used on the wards. Each stage takes so much time, because when the product 'hits the shelves' it must work without fail; there is no going back.

China is one of only two or three countries manufacturing bagasse, with sadly no current manufacturer in the UK. The design had to ensure that the PiPs nest with each other, to keep transport costs to a minimum. Each PiP in a stack adds just 4mm.

It is a long process, requiring dogged determination, patience, a good team and a huge amount of time. However, the gratification in improving just one process for patients and nursing staff, saving the NHS hundreds of thousands of pounds and reducing plastic waste, has been well worth the effort.

You might just find yourself using a PiP in the future.

*Nick Burns-Cox and
Steve Swan*

What a fantastic story and all achieved with local talent - many congratulations - Eds



Coffee, Cake and Chat

Ashbrittle Village Hall

**Saturday 21st June
10.00 - 12.00 noon**

**Unlimited Coffee and Delicious Home Baked
Cakes available, for just £5.00.**

Please come and join us - all welcome !

Wivey Cares Big Fundraising Week 23rd – 29th June 2025

Wivey Cares, a community-led project, was set up seven years ago to improve the physical, mental and financial health and well-being of adult residents of the Ten Parishes, which includes Ashbrittle, Bathealton and Stawley. Since then, we have helped more than six hundred clients.

Currently we look after one hundred and thirty six active clients and run a weekly Memory Activity Group for people with memory loss. Requests for help are on the increase and the care packages we broker using our micro-providers are becoming much more complex. At the time of writing, the total of weekly care hours brokered by Wivey Cares stands at four hundred and eighty five.

We apply for grants and take part in fundraising activities constantly to raise the funds we need. One of our recent applications has been particularly successful:

We have been selected for the **Big Give Small Charity Week 2025** from 23rd to 30th June 2025 <https://biggive.org/small-charity-week/>. Big Give have offered us match funding up to £2500, but we need to raise the same amount ourselves during that week to make the most of their offer.

Daunting, but the prospect of reaching our £5000 target will give us wings!

To count towards the match funding, financial donations need to be made via our campaign page <https://bit.ly/WeSupportWiveyCares>. On 23rd June, at 12 o'clock, the campaign will go live and a **Donate button** will appear on the page. We can accept cash donations as well which we then will pay into the Big Give campaign account. **Please, if you are able to, support us.**

Follow us on Facebook to get daily updates. Watch out for the posters popping up here, there and everywhere. Take part in our fundraisers detailed on the opposite page in this issue, or run your own. Buy some raffle tickets and bid for one of the lots in the online auction.

We could also do with helping hands before and during the campaign week; please get in touch if you can help. Needless to say, donations to the raffle and the online auction will also be very gratefully received!

Valeria Coots, Wivey Cares Trustee
valeria@wiveycares.net, 07733 183825

Appley Pavilion

A Saturday has become available for hire during the summer months, get in touch if you wish to hire.

SATURDAY 2ND AUGUST 2025

williamspfa@outlook.com to book



Coffee Morning at Springers, Kittisford

Find us at TA21 0SA What3words *unionists.munch.lovely*

In aid of Wivey Cares - a charity supporting care needs throughout the Ten Parishes

All monies raised will be match funded

Wednesday June 25th

10.30 - 12.30pm

Cakes - plants - produce - 'Bring and Buy'

Raffle, with some excellent prizes



WIVEY CARES BIG FUNDRAISING WEEK

SUPPORTED BY BIG GIVE MATCH FUNDING*

WIN A FITBIT

Guess the total number of lengths swum at Wivey Pool between Monday 23rd and Friday 27th June and win a Fitbit!

Entry is £2 per guess, or 3 for £5. Second and third prizes are a free breakfast!

Prizegiving during Big Breakfast on Sunday 29th June.

Register with samuel@wiveycares.net

WALK YOUR DOG FOR WIVEY CARES

Record the miles walked between Monday 23rd and Saturday 28th June on our sponsorship form. We welcome canine participants in every form and shape, eg stuffed toys, photos, ceramics (to be carried on the walk) - or the real thing.

Photos and videos of canine entrants needed. Entry fee £2.50 (includes a raffle ticket) with minimum sponsorship of £10 to be raised. Prizes for the top three distances walked will be awarded during The Big Breakfast on Sunday 29th June.

Register with valeria@wiveycares.net or call 07733 183825

THE BIG BREAKFAST

Sunday 29th June 2025, Wivey Rugby Club, 9.30am – 12 noon.

This is the closing event of the Wivey Cares Big Fundraising Week and will feature food, music, perhaps even dancing, raffle draw and prizegiving for the Pool Challenge and Dog Walk fundraisers.

**We have been selected by the Big Give Small Charity Week campaign for match funding. Whatever sum Wivey Cares raises during the week, Big Give will double it, up to £2500.*

We would be very grateful to community members for organising their own fundraisers and donate the funds raised directly on the campaign page [https://bit.ly/](https://bit.ly/WeSupportWiveyCares)

***WeSupportWiveyCares** from 23rd June, 12pm onwards.*

www.technological.co.uk/ex16

Full Fibre Broadband

Free Connection using UK Gigabit Voucher

Register Interest Now

Funding Available

BASIC BROADBAND

40Mbps

Symmetrical Service

£40 a Month

- No Connection Charge*
- 40Mbps Download
- 40Mbps Upload
- Unlimited Usage
- 12 Month Contract
- Wireless Router
- Optional Phone Service

Inc VAT (*with Voucher)

ULTRAFast

300Mbps

Symmetrical Service

£75 a Month

- No Connection Charge*
- 300Mbps Download
- 300Mbps Upload
- Unlimited Usage
- 12 Month Contract
- Wireless Router
- Optional Phone Service

Inc VAT (*with Voucher)

Find out more & sign-up online
info@technological.co.uk



Funded by
UK Government



TECHNOLOGICAL



— THE —
GLOBE INN
APPLEY



Celebrate Summer at The Globe

Soak up the summer sunshine in our beautiful beer garden this June, while you tuck into our delicious home-cooked food and thirst-quenching selection of locally-produced beers, ciders, spirits and soft drinks.



**HAVING A FAMILY CELEBRATION OR PRIVATE EVENT
THIS SUMMER? WHY NOT HOLD IT IN OUR GORGEOUS
GARDEN MARQUEE?
CALL US FOR MORE DETAILS.**

Open

Wednesday to Saturday 12 noon – 11pm
Sunday 12 noon – 4pm

Food

Served from 12 noon – 2pm & 6pm – 9pm
Pizza Night every Friday 6pm – 9pm



Appley, Stawley, Wellington, Somerset, TA21 0HJ



01823 673147



stuardurston@hotmail.co.uk



The Globe INN Appley



Food security for the nation

On being asked to write an article on British agriculture so soon after VE day, it would be remiss to not explore the significant impact this historical period had on our countries farming landscape, both literally and figuratively.

Pre-war, Britain was only 40% self-sufficient and that was with a much smaller population than today. We were heavily reliant on imports from overseas. This made us sitting ducks in the water when the U-boat campaign was implemented by the enemy, since most imports were shipped by sea. This meant efforts on home turf had to be ramped up to ensure the nation was not starved into capitulation.

As a result, more land was cultivated to give more growing space and livestock were selectively bred to be bigger, better and more productive. Agriculture was so vital to the war effort that farming became a protected profession to allow men to remain at home to ensure the nation was fuelled for what was to come. This is not forgetting the many women who became land girls, a vital backbone to agriculture during such hard times. These efforts amongst others halved British food imports, an incredible feat.

Sometimes, it feels when we look back at the war effort, works to economise and improve efficiency were regarded as pioneering, vital and groundbreaking. Sadly, when we look at farming efforts to improve productivity now it is increasingly labelled as factory farming and irresponsible. In some areas (both livestock and arable), it is acknowledged there is room for improvement:

- The fact that we are reliant on monoculture to feed the nation, which decreases biodiversity significantly.
- Longevity of production animals is not where we would like it as a nation.
- Greenhouse emissions are a target, both inside and outside agriculture.

All these and other areas are being focussed on to ensure a sustainable future of production. What is excluded from the divisionary press that sometimes creates a journalistic fog around UK's farming industry is the efforts that are made to address these and many other issues associated with our sector.

I recently visited a research institute for beef sires of a national breeding company where cow farts and burps are measured (assessing methane production) alongside their feed intake. This is then pitched against the kilograms of beef they produce, and only the very best bloodlines are selected for contribution to the gene pool.

On our own farm, in a number of cropping fields we have twelve metre sections alongside

the River Tone and other field perimeters dedicated to wildflower strips, as part of a biodiversity grant. This is to encourage the vital pollinators which contribute to not only the local wildlife flora and fauna but also yields of the crops these strips reside alongside.

Dairy and beef cattle have been selectively bred to be more efficient over the previous decades. The average dairy cow milk yield in 1920 was 2,000 litres per year, today it is 10,000 litres per year.

With the rising population agriculture has had to keep pace to meet the demand for protein and plant produce. The least efficient areas for agricultural production are the developing world, therefore it could be argued that it is our responsibility as we have the resources to improve and develop techniques to enable progress globally.

This argument does not sit easily with all people. There has recently been an increased interest to 'rewild' portions of valuable, productive farmland. In its purest sense this would be detrimental to national output and food security. This does not have to be the case.

Frustrations abound

What's frustrating is the dichotomous nature with which this is viewed and reported. Rewilding and productive agriculture are not mutually exclusive. Many companies that purchase animals and their products are increasingly encouraging farmers to farm in a sustainable and responsible manner – not allowing water run-off, utilising green energy and rewarding animal longevity, welfare and productivity. Increasingly, farmers are part of national and international schemes that hold the environment and its future central to their core beliefs. Without natural resources, there would be no farming.

This article is not aimed to divide readers on one side or the other, production versus rewilding, but to open your eyes to the possibility of both being compatible in today's modern landscape. Next time you see a divisive or shaming article on either party, perhaps consider it with a pinch of salt and talk to the people who are at the coal face, as there really is more to it when you begin to dig a little deeper. I have yet to meet a farmer who is not happy to engage with members of the public to further the understanding of our industry. It is not faultless; it would be naïve to assume so. However, every person involved is making the effort to improve this industry year on year. I just hope our forebearers from VE day would be proud of what we are, and yet to become.

*Pip White
Veterinary Surgeon and farmer's daughter*

Walk West Tone

21 June 2025

A day of walking and talking with old friends and new.
Open churches with flowers, music, tea and cakes.



A day for everyone in the community to enjoy together.

Come and join us on a community walk with stunning views of the West Tone Benefice. Enjoy 13 miles from Rockwell Green to Ashbrittle, winding through beautiful lanes and countryside. The walk wends its way from church to church, these beautiful old buildings acting as waypoints as we travel the landscape in which they lie.

Want to know more? Visit: westtone.org.uk/walk

Here are the approximate departure times -
join us at any point along the way:

9.30 am All Saints Rockwell Green
10.45 am Holy Cross Sampford Arundel
12.10 pm St. Margaret's Thorne St Margaret
1.30 pm St. Peter's Greenham

2.55 pm St. Nicholas' Kittisford
4.25 pm St. Bartholomew's Bathealton
5.40 pm St. Michael's Stawley
6.20 pm St. John the Baptist Ashbrittle
(arrival and finish).

Red Wine Supernova (IRE)

2021 Bay Mare

By: Kingston Hill (GB)

Ex: Another Tonto (IRE)

By: Definite Article (GB)



Have you ever been interested at the thought of becoming a racehorse owner?

Red Wine Supernova is a 4-Year-Old Bay Filly by Kingston Hill and could be just the one you have been waiting to get involved in. She is a half-sister to Moroder, who is an eight-time winner in the UK and recently won the valuable Grimthorpe Chase at Doncaster, for a second time running.

She has had just the one run in an Irish point-to-point and looked to be travelling like the winner, before unfortunately falling at the second last fence at Monksgrange on 30th March this year. Trainer Colin Bowe, whose horses we have done very well with previously, is very sweet on her and jockey Barry O'Neill loved her attitude throughout.

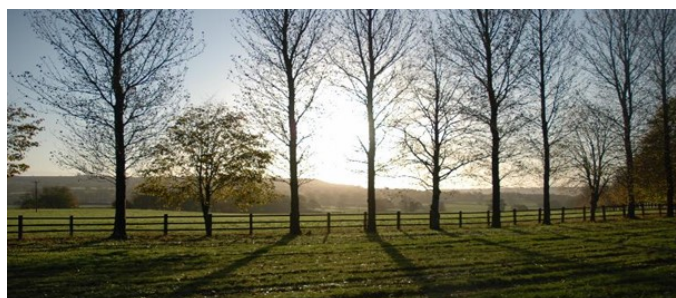
The Irish point-to-point website said the following about her:

“Making progress to dispute the lead before halfway, this Kingston Hill bay had still yet to be asked a question when crashing out at the penultimate obstacle.”

We are looking to set up a syndicate of 8 shares at the cost of £12,200 + VAT per share which covers the purchase of the horse (and all associated costs, vetting, agents fees & transportation from Ireland etc.) This will also include all training fees up until the end of October 2025. We would also be open to discussion of the idea of smaller shares available if this is something that may interest you.

If you would like any further information, please do get in touch:

Email: david@davidpipe.com or Phone: 01884 840715





Waterrow Village Hall Summer BBQ



Saturday July 12th 2025 -12.30pm

Waterrow Village Hall, Waterrow - TA4 2AX

A great way to spend a sunny Saturday afternoon with:

- *A range of BBQ dishes and Vegetarian options*
- *A selection of tasty salads and sides*
- *A wide variety of homemade desserts*
- *Soft drinks are provided, tea /coffee/ squash*



A free prize picture quiz is included in the price!!!

Please bring your own alcoholic / preferred soft drinks.

Tickets can be purchased from Liz Kilbride at St Andrews café on Thursday Mornings or you can call Sarah on 01398 361202

Priced at only £10 for adults £5 for Under 12's

We look forward to seeing you there!!!

Bathealton Plant Sale

Thank you to all those who came and bought plants and teas on May 10th. Once again we were blessed with wonderful sunshine for the Plant Sale.



Lots of plants on offer and good advice on growing them too!

Not only were there some fabulous plants to buy but we were also entertained with music from Wivelele and educated by First Responders.

Thank you to the Bathealton ladies for providing teas, cakes and ice-cream. Thank you also to those who donated plants, cakes and their time before, on the day and after.



Special thanks must go to Morag Berthon for once again allowing us to have the sale at her wonderful home. Morag has hosted the plant sale at Hellings continuously since 1998, except during the Covid

year, when it was run remotely.

This year she was helped by Simone Christin van der Linden to ensure it happened.

In total £1353 was raised for Church funds. The Bathealton Church team is very grateful to all who made it possible.

Already looking forward to 2026!

Sarah Eustice

Celebrating Nature at Kittisford

It was Rogation Sunday, the bells of St Nicholas at Kittisford were ringing out and what better way to reflect on our natural surroundings and ask the harvest to be blessed than to spend time in the glorious setting of Kittisford House garden.

The sun shone and thankfully our host, Perdita, had a ready supply of battered sun hats for the congregation to wear. For this was no ordinary church service at Kittisford. We were outside, enjoying all nature had to offer; it was a bit like an Italian summer's afternoon. Rev Andy led the service and we were treated to singing by the Village Festival Choir and some thoughtful reflections from Mark, the gardener at Kittisford House.

We looked skywards as Nick Bengé read Ted Hughes poem, "The Swift" and then were entertained by the Open the Book team as they acted out the lesson "Calling the Disciples". It was wonderful to see so many people there from the whole community and Benefice.

Afterwards we were treated to a magical evening of pizzas on the terrace. A huge thank you to Tansy and her team who made over sixty pizzas, and to everyone who came and supported us.

The evening raised £760 towards keeping St Nicholas afloat.

Annie Musgrove, Churchwarden



Bathealton Village Hall

POP UP CAFÉ

Why not 'drop in' to our 'Pop up'.

A friendly warm space: time to catch up with old friends or meet new ones.

The next 'Pop - Up' will be on
Monday 2nd June
12noon - 2.00pm

Menu

Savoury:

Homemade: Soup and homemade bread

Sweet:

Homemade: trio of cakes

Unlimited Cafetiere of Coffee or a selection of teas. All for £8

You can reserve a place by calling Del on 07980 994082 or just pop in.

STAWLEY FESTIVAL

2025

Sunday 6th July 2-5pm

LIZZIE MERRICK | RADIO SUNSET |

KARL FICAROTTA + OPEN MIC

Music, Food, Stalls, Kids

Activities & Good Vibes!

Appley Pavilion, TA21 0HH

Adults £5 (18+)

Kids £2.50 (1+)

Family Ticket £15 (2 Adults & 3+ Kids)

For more details on signing

up for open mic or stalls

email – stawleyfestival@gmail.com

Pre buy tix:



Proceeds are equally split between FOSS and Stawley Preschool.

FOSS - Charity number: 1107306

Sorry, only Assistance Dogs are permitted at the Pavilion.



A Summer Celebration

with John Young and the Village
Festival Choir

Bring your own picnic (drinks available) to the
beautiful gardens at Stawley Mill

Saturday 12th July at 5.00pm

Plenty of singing and participation: Rounds, Songs, Anthems,
Poems... and please bring something to sit on.

In the Sunshine under the Bells

In the evening sunshine, when Sally was heaving on a bell rope in Stawley Church, I was sitting quietly in the car, listening to the bells and watching the sky drifting overhead...

On the way there, Sally had drawn my attention to a hot air balloon floating across the sky. After a while, it disappeared under some trees and likely landed close to Kittisford. I thought about this, and wrote the following:

Red Balloon

Above the bird chirps in the trees,
the quiet voices that have gathered,
beyond the motors' noise increase,
in gentle quiet that ever mattered,

there round and graceful image passed,
a red balloon, whose helium
they hoped to journey's end would last,
its silence lacking motion's hum:

beneath a wicker carriage hangs,
above it hiss of sometime flame,
while heard is peal of gentle clangs
from tower whose bells have rural claim

across the green fields' dip and rise:
through soft May evening spreads their nature,
above new leaves, beneath pale skies
where floating eyes gaze down in rapture.

Beyond my view balloon has gone,
no doubt in hidden field a landing
where people leave, new memories born
of flight with group in basket banding,

a world I've seen but never sought –
by nerves unsure nor had the chance? –
but those who have their journeys bought,
they talk of thrill tinged with romance:

I might suppose that, in a way,
through springtime warmth and Autumn coolness,
I board and fly with Christ each day
to sense and know in me life's fullness.

Martin Perry

Village Oil Group

The next oil delivery is due on

Wednesday 11th June

To place an order, please email:-

judy.milne@btopenworld.com or contact

Judy or Michael Milne on 01823 672205 by the

Monday before the Wednesday delivery

New members always welcome

A Celebration of 20 Years of Appley Pavilion

We are a small group on the Appley Pavilion Committee, but we couldn't miss an extra event such as celebrating twenty years of the Pavilion.

So hog roast and band it would be. "Twisted Vinyl" played a real mixture of decades of music and the little hog supplied around one hundred people with a tasty supper. We would like to thank all who came along for our event when £1000 was made. A massive thanks to all who took turns in the bar and raffle - you know who you are!

The Pavilion is a real asset to the community and used by many. If you would like to help, please get in touch, there is always room on the committee!

My three children all went to toddler group and pre-school at the Old Pavilion along with many others who are reading this today. You may remember the quaintness of the building looking very tired, with a very small kitchen and a splintered wooden floor! It did its job, but time moved on and the new 'disabled rights for access' regulations had to be followed.

As a very reluctant parent at the time sitting on the pre-school committee, along with Rachel Adcock, another mum, we were fighting our corner for the pre-school. Not wanting to be over charged for rental fees as we would be moving into a much larger building. The Pavilion Committee understood and kept their fees to a minimum for us to ensure we kept going and we did! The Pre-School thrived with a parent run toddler group and pre School.

The new build

During the build we re-located to the Ashbrittle Village Hall and green which served its purpose and worked very well once we fenced the green off with sheep netting!

The Cricket club had the same thoughts, could they afford it? Firstly they had to expand the field of play because the new Pavilion took up part of the pitch. A strip of ground was purchased and the pitch expanded, a lot of ground work, re-seeding, stone picking and fencing had to be done and the club played their games at Brompton Ralph during that summer.

Everyone gained, groups survived and thrived in the end. We have to be thankful for the National Lottery Grant and a pavilion committee with vision and determination to see it through and getting it up and running - cheers to them!

Suzette Williams, Committee Chair



HARPFORD HERBS



VISIT OUR PHYSIC FIELD & ORGANIC FARM OPEN EVERY SATURDAY IN JUNE

FOCUSSED TOURS 10.30-12.30

£25 EACH, MAX 6 PEOPLE

DIGESTION - 7/6

SLEEP - 14/6

MENOPAUSE - 21/6

ACHES & PAINS - 28/6



GUIDED FIELD TOURS 14.30-16.00

£10 EACH, MAX 10 PEOPLE

FREE SELF GUIDED TOURS 12.30-14.30

ADDITIONAL GROUPS CAN
BE ACCOMMODATED BY
ARRANGEMENT



PARKING AVAILABLE ON SITE

For more information and booking visit

www.harpfordherbs.co.uk

or call Tryphena on 07805 512388

NO DOGS PLEASE

Scan to book!



Tryphena Huntingford is a professional herbalist
registered with NIMH

Minutes of the Stawley Parish Council meeting held on the 6th May 2025

Matters Arising not covered elsewhere

- **Defibrillators.** There are two defibrillators in the Parish. It has been determined that the cost of providing another one would be in the order of £1,000. It was agreed that no more should be provided in the Parish.
- **VETS.** It was the view of the Council that there was little value in keeping the VETS scheme going as it has been superseded by informal WhatsApp groups and other methods of contacting neighbours.

Emergency Planning Pat Sweet briefed the meeting on the talk she had attended on this subject. A previous attempt at establishing an emergency *WhatsApp* group had failed but it was the view of the meeting that an Emergency Plan should be developed for the Parish. Paul Musgrove and Pat Sweet will meet outside the meeting to discuss the best way of developing this and reporting back.

Finance

- The current bank balance is £5,059.70 and the Unity Bank is £10,145.62.
- Accounts for 2024/25 were accepted by the Council
- It was determined that the Council was exempt from audit and the AGAR was signed by the Chair and Finance Officer (RFO).
- Renewal of Insurance. The RFO has determined that the offer by Zurich was at a better price than the insurance cost last year and should be accepted. The RFO was asked to determine the level of cover for volunteers working on footpaths and public liability for any work carried out.
- It was agreed that we should renew Microsoft 365 at a cost of £45.60 + VAT
- It was agreed that a financial grant of £200 should be made to Parish News.
- Invoices – New pads for the defibrillator at the Shop - £59.94 and maintenance of the defibrillator at Kittisford £151.20
- Lloyds bank now charge us £4.25 per month.

Reports from Members

Roads – The leaning telegraph post in Greenham was reported and has been fixed. The potholes on the road by Cothay are bad again. They will be reported once again.

Footpaths – Sarah Jones (SJ) has met with the Footpath Warden for Langford Budville to compare notes. The path southwest from Greenham towards Devon is overgrown. SJ will discuss with the owner of Greenham Cottage.

Any Other Business – A planning application has been made since the publication of the agenda to build a house at Stawley Wood Farm. This follows from a planning decision in 2024 by Somerset Council that prior approval would be granted for a similar house with the same footprint. The difference between that prior approval and this planning application is the addition of a first floor, garage and store room. The meeting decided that this was not a sufficient difference to warrant a comment from the Parish Council.

The full minutes can be viewed at <https://stash.org.uk/>

Paul Musgrove (Chairman)

Gardening Club

On Wednesday 9th April a group of nine members paid a visit to the walled garden at the Cannington Campus of the Bridgwater and Taunton College. This campus offers courses in land-based subjects such as: animal management, construction skills, an equestrian centre, a nuclear centre and courses in dog grooming and a two hundred hectare farm.

The walled garden itself was established almost nine hundred years ago in 1138 by Robert de Courcy when he endowed an order of Benedictine nuns at Cannington Priory.

As is our custom we met up for a cup of coffee to gather our strength for a walk round the garden. With a group like ours there is always someone who can identify unusual plants (and if all fails there are apps that will do it on the phone). Unfortunately, they are overrun with bindweed (*Convolvulus*) in some of the beds; this is partly due to shortage of staff but was aggravated by being neglected during Covid.

Some of the areas comprised collections of plants of all sorts with a specific colour theme. In among the plants were a formal fountain and a couple of ponds providing habitat for damselflies and dragonflies. There were areas of formal planting along with numerous perennials, shrubs and trees. Within the area of the garden there is a botanical greenhouse which is divided into temperate, tropical and arid zones.

We were very lucky to meet the Head Gardener who is French and with only two part-time assistants managed the whole area. On the day there was a very chilly wind and after warming up a bit in the greenhouses we repaired to the café again for lunch!

Thanks were expressed to Sue Jacoby for organising this interesting visit.

Mike and Freda Parkinson

Stawley Community Village Shop & Tea Room

Opening hours

Monday to Friday 8.00am to 5.00pm

Saturday 8.00am to 12.00pm

Sunday 9.00am to 11.00am



The Post Office is here every Thursday 11.30am to 1.30pm

Contact: 01823 674361 or email shop@stawleyshop.com

The shop continues to thrive with the fresh fruit and veg selling well and the sandwiches flying out of the chiller! Thank you to all our customers for supporting us.

News for June

Bakery Delivery to the Shop

After a very successful bakery tasting week, we have now arranged with Glenmore Bakery to have a weekly delivery which will be on a Thursday. First delivery will be on Thursday 5th June.

If you signed up for bakery items during tasting week, or you would just like to place an order, please pop into the shop have a look at the items available and the prices, and tell us what you would like. We can take regular weekly orders, or one-offs.

Just let us know by the end of the Tuesday prior to your required delivery date, you can always phone or email us.

Also, the pies and pasties were very well received, so we will be carrying these in the shop, in place of the current supply.

We are really excited to be able to offer fresh bakery products to our customers once again, so please come along and see what's on offer.

Post Office: Use it or Lose it!

The SCA would like to remind everyone that the post office, at the shop on a Thursday, offers a good range of services. The GPO continues to monitor closely use of the "peripatetic" services such as Stawley Village Shop.

Unfortunately, the footfall at the PO session is currently low, therefore we are in danger of losing the service if we don't use it.

Lunch Club

The April speaker was our versatile treasurer and technical manager Pauline Wood who talked about the much loved narrow boat which she and her husband rescued from near dereliction and are restoring to former glory. Pauline told the fascinating story of their long term relationship with the boat and the frustrations and triumphs of the restoration. All illustrated with our newly acquired technical equipment.

On the same day, a group of us were able to visit Ashbottle Stud, following up from our talk back in March. We met the new foals and their mothers, and learnt about the everyday workings of the stud. We much appreciated being shown round by the owner James Rowsell and stud manager Ginnie

Our next meeting is on Thursday 26th June, in Ashbottle Village Hall. The speaker, Mike Webb of Wellington Rotary Club, will be talking about The Empire State Building Tragedy.

He writes:

New York, 28th July 1945 - the event that swept news of the war off the front pages of the world's newspapers. Did it give perpetrators of 9/11 their idea, or was it just a terrible accident? Why has the 'attack' on the world's most famous building slipped out of memory?

This talk looks at the people involved in the air and on the ground, on the day they'd never forget. Michael Parkinson, a long established Rotarian, highly recommends this talk.

If you would like to come and not only hear the talk, but meet other like minded people and enjoy a delicious Jackie White lunch, then please let me know in good time. I need to let Jackie know numbers by Monday 23rd June.

My contact details for booking are: email harlingdelia@gmail.com or telephone 01823 672203.

Delia Harling

News from the Parish News

Thanks again, for your kind support and excellent response to our recent appeal.

Donations received from:

Stawley Parish Council

Nancy Henson

Penny Hare

Sue Batten

Alan from Waterrow

Anonymous in the village shop

Donations may be left at Stawley Shop or sent directly to the Treasurer. Details inside back cover.

Andrew Millard, Treasurer

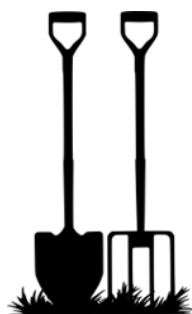
Garden Maintenance

Jon Geary

Laurel House, Ashbottle

07790 762154

jon_geary@hotmail.com



STAWLEY MILL

JOIN US FOR



BOOKS & BISCUITS

COFFEE & CAKE

1ST & 3RD WEDNESDAY OF EVERY MONTH

4TH & 18TH JUNE

10AM—12.30PM

IN AID OF CHURCH RESTORATION FUND



Mobile Library

at Greenham Bridge

Next visits: 3rd June and 1st July
9.50 - 10.10 a.m.



**CALLING ALL
LOVERS
OF RHYTHM!**

Have you got a sense of rhythm, fun and energy? Are you up for performing? Then get in touch! Beginners or experienced drummers welcome.

We play Brazilian samba reggae rhythms with choreographed dance moves

***If you would like to try it out,
please contact Emm:
emmelineadacke@hotmail.com
or call 07534 312993***

**Community Radio for the
10Parishes and Beyond**



**Broadcasting 24 hours a day
on FM radio and the Internet.
For the people by the people.**

**Contact The Presenter Live :
Email : studio@10radio.org Text : 07786202240
Message the Presenter via 10radio.org
or via the 10Radio App**



**VILLAGE LUNCH CLUB
ASHBRITTLE VILLAGE HALL
Thursday, June 26th at noon**



**THE EMPIRE STATE BUILDING TRAGEDY
Mike Webb - Wellington Rotary**

*Why has the 'attack' on the world's
most famous building slipped out of memory?*



**BOOKING ESSENTIAL
Delia Harling ~ 01823 672203
harlingdelia@gmail.com**



Wivey Link

Wivey Link is a local, community-run, accessible transport service for people of any age.

Our trained volunteer drivers take people to health and medical appointments, as well as social trips and shopping.

- **Door to door transport service** based in Wiveliscombe
- **Wheelchair** friendly vehicles
- Fares are reasonable and bus pass holders receive **concessions**
- We drive to all surrounding parishes including Taunton and Wellington
- Our drivers are all **volunteers** - get in touch to find out about volunteering with us

Booking Line

9.30am to 1pm Weekdays

01984 624 666

wiveylink@wiveliscombe.com

Supported by Wiveliscombe Town Council



Pat's Guitar Services

Re-string
Professional
set ups
Fret dress

Re-fret
Wiring alterations &
pickup mods
Repairs

Professional guitar servicing
and repairs.

Contact: patrick.weeks@btinternet.com
07724 338853

The Old Mill, Tracebridge, Wellington,



Bee Yourself

Beespoke Care and Support at Home

A friendly, professional service, offering-
Home Help, Companionship, Meal Preparation,
Personal Care, Light Cleaning, Pet care,
Overnight Care – Sleeping or Waking
(Respite only)

Reading, Activities, Palliative and End of Life
Care.

Fully Insured, Enhanced DBS,
Micro Provider registered in Somerset.

Helping you to stay independent
in the comfort and safety of your own home.

Wellington and surrounding rural areas.

Please contact:

Charlotte Wakley on 07760 135980
or beeyourselfcare@outlook.com

Jo Clarke FHT ITEC IHBC APNT

Holistic Therapist with 30 years experience.
Massage, Myofascial Release, Aromatherapy
Vibrational Healing, Reiki Healing.

My focus is on the holistic approach to health
and healing, to look at each person as a
whole not just at the symptoms present. My
aim is to improve physical health and
mobility, whilst also facilitating deep healing
on an emotional, mental and spiritual level





I look forward to welcoming you to my
beautiful therapy centre set in the peaceful
Somerset countryside,
near Stawley and Ashbrittle.

**For Appointments: Call or WhatsApp/text
07929 378534**

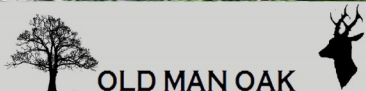
or

Email: shumwood.therapy@gmail.com

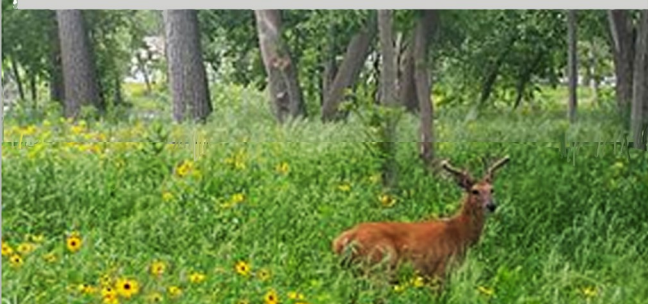


-  **Reward based methods**
-  **Accredited Trainer**
-  **121 Sessions**
-  **Group Classes**


-  **allforwoofs.co.uk**
-  **allforwoofs@gmail.com**
-  **07749 261 772**



OLD MAN OAK
THE OLD MILL TRACE BRIDGE WELLINGTON SOMERSET TA21 0HG
07753 814553



VENISON FOR SALE
MINCE, DICED, STEAKS, JOINTS
All naturally harvested!
Bespoke orders fulfilled too - just call me to ask.
If you'd like to go on the Whatsapp group, please let me know. Ant.




The Bowen Technique

Kate Weeks cert ECBS MFHT MBTPA
Muscle and Fascia release.

A gentle, intelligent approach to treating a wide range of muscular skeletal and systemic issues, including;

Back pain, neck pain, shoulder problems, headaches/migraines, TMJ problems, bursitis, fasciitis, SPD, pelvic issues and infant colic to name but a few.

Safe for all age groups and during pregnancy.
Bowen specialist with 20 years experience.

Clinics held at The Terrace, Taunton.
01823 338968/07721 462096
kateweeksbowen@btinternet.com

FURNITURE MAKER

MICHAEL COOPER STUDIO

Traditional fine woodwork.
Designed and crafted to commission.



07919 020886
hello@michaelcooper.studio

CHARLIE'S HANDYMAN SERVICE

Whether it's a small home repair, a new patio, or creating a cosy garden room, I'm here to help you with a wide range of home and garden projects.

With years of experience in carpentry, maintenance, and construction, no job is too small!

Based in Kittisford, get in touch today for a free consultation and a friendly, reliable service you can trust.

Call: 07380 526 565

www.charlieshandymanservice.com

Cleaning and Home Help

One off or regular jobs

General cleaning

My cleaning products or yours

End of tenancy cleaning

Help with shopping

Dog walking

And much more

References

available

Call Sarah on

07772 761677



Buzzing Bee-ns

Mobile Coffee Tuk Tuk

07801273723

buzzingbee-ns@outlook.com

**Available to hire
for events - parties
weddings and more**



*Follow us on
Socials*



Home & Garden Services



Emma

Are you finding yourself:

- 'Struggling with the juggling'?
- Needing someone experienced with a wide range of physical, mental and neurological health issues and sensory loss?
- Or are things just starting to seem more difficult these days?

Here is what I have to offer you:

Home: Spring cleaning, Ironing and One off. Food Prep

Garden: Maintenance, Allotment, Clearance

Supporting your independence: taking care of jobs that are getting tricky or empowering you to overcome the barriers yourself!

Decluttering & sorting: sensitively supporting you to make your own choices

Admin and Computer Work: organising and dealing with a whole range of tasks or helping you make better use of your computer/device

Emma Hurford

Living Well – Support, Home Help and Relief Care

indianamaish@hotmail.com 01823 672003

WELLINGTON PEST CONTROL

WASPS * RODENTS * MOLES

30 YEARS PROFESSIONAL EXPERIENCE

YOUR PEST CONTROL NEEDS DEALT WITH AT AFFORDABLE COSTS

THAT REFLECT OUR SERVICE TO LOCAL CUSTOMERS

RELIABLE RESPONSE FROM A FRIENDLY, QUALIFIED PEST TECHNICIAN

07731 549669

Kim White D.O.

Registered Osteopath

Freathingcott Farm, Holcombe Rogus,

Wellington TA21 0NG

For appointments please contact the practice on:

01823 672925



Sympathetic repair and restoration of historic buildings

- * HISTORIC BUILDING CONSERVATION AND RESTORATION SPECIALISTS
- * TRADITIONAL LIME RENDERING, POINTING AND INTERIOR PLASTERING
- * STONE CONSERVATION AND MASONRY REPAIRS
- * FAÇADE RESTORATION AND PAINT REMOVAL SYSTEMS
- * ROOFING AND LEADWORK
- * TIMBER WINDOW REPAIRS
- * TRADITIONAL CARPENTRY AND BESPOKE JOINERY
- * KNOWLEDGE AND EXPERIENCE OF WORKING ON ALL FORMS OF LISTED BUILDINGS, INCLUDING ECCLESIASTICAL

www.thewessexconservationco.co.uk
info@thewessexconservationco.co.uk
George Hannon: 07727 177467
Will Stevens: 07815 464908
14 George Street, Wellington, Somerset TA21 8JA



Our company is accredited by the guild of master Craftsmen, this means we will abide by their code of practice so you can be assured of the highest quality of workmanship at a reasonable price, giving you complete peace of mind at all times.

Home Aerials

Tel: 01984 623232

homeaerials@gmail.com

All Types of Aerials and Satellite
Digital Upgrade Specialists
Digital Boxes Supplied and Fitted
Wiveliscombe & Surrounding Areas
Local, Reliable, Experienced Engineer

**Contractors for Local Authorities
and Housing Associations**

**A Family Run Business
for over 39 years**

Please contact Lulu or Martin Milton



**Beautiful flowers - grown locally and
sustainably**

Local gift bouquet delivery and
flower subscriptions
(March – November)

Natural Farewell flowers

Weddings and Events

Flower workshops, demonstrations and talks

Contact Jan on 07525948053 or for more
information or visit:

www.blueshedflowers.co.uk

PHILLIP HUMMEL PLUMBING & HEATING

All domestic plumbing work undertaken.
Oil Boiler service and installation.
Oil Aga / Rayburn Service.
Oil tank service and installation.
Bathroom design and installation.
Bathroom and Kitchen Tiling.
Underfloor heating installation.
Unvented hot water cylinder installation.



Insured and registered oil heating engineer with OFTEC.

Clean, tidy and polite; references are available if required.



For more information please contact
Phillip Hummel

Home Telephone number. 01823 652782
Mobile telephone number. 07456668530
Email philliphummelplumbing@gmail.com

H Tredwin & Son Ltd

Independent Funeral Directors
15 & 17 North Street, Wellington



Providing a proficient, personal and caring
service at **all** times.

Fifth generation independent family business

Private chapels of rest

Pre-paid funeral plans

www.htredwinandson.co.uk

Contact Nick or Louise Tredwin: Telephone: 01823 672287

Mob: 07702 726264

RACHEL GUNDRY

LETTER CARVING IN STONE

Headstones Commemorative

Poetry for the Garden House signs



Sundials Foundation
stones

Carving in situ

Restoration/recarving

Design & Illustration

*Visit local studio to see
stone samples and dis-
cuss any enquiry*

**TEACHING / WORK-
SHOPS AVAILABLE**



rachelgundry@hotmail.co.uk

tel: 01984 624 897

mobile: 07914 822 944 (weekdays)

Wanted



Standing hardwood: Oak, Ash,
Beech etc

TOP PRICES PAID

Call Carl Westcott 07973564759



Tel: 01823 672900 Ltd



**Household bin
full, give us a call!**



We also supply:

Dumpy bag service – you fill, we collect!

Any amount and any grade of crushed concrete including delivery if required.

2, 4, 6, 8 & 12 cu skips.

20 & 40 cu Roll On Roll Offs.

Grab hire available to collect your awkward waste.

Asbestos disposal available.

Wasteology Ltd is not limited to council schedules, our only schedule is yours!

Anthony James

Dip F.D., MB.LE., MB.L.F.D.

Funeral Director

A Dedicated Family Business

24 hours, 7 days a week

Caring Personal Service

Private Chapels of Rest

Golden Charter Pre Payment Funeral Plans



Telephone: 01984 624149

Broad Meadow View

West Road

Wiveliscombe

TA4 2TB

Golden Charter
Funeral Plans

www.tauntonfuneralservice.com

tfstauntonwivey@aol.com

Taunton Funeral Service

55 Bridge Street

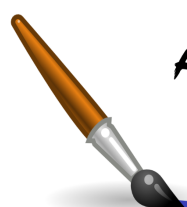
Taunton

TA1 1TP

Tel: (01823)

321077

A.J. WAYGOOD PAINTER & DECORATOR



FREE QUOTATIONS
ALL ASPECTS OF DECORATING
FRIENDLY & RELIABLE



Checkatrade.com
Where reputation matters

TEL: **07552445388**

EMAIL: **AJWAYGOOD@HOTMAIL.COM**

WEB: **WWW.WAYGOODDECORATING.COM**

GB BUILDING & MAINTENANCE

Listed Building Specialist

- *Lime Plastering
- Internal/External
- *Cob Repairs
- *Lathe and Plaster
- *Stonework
- *Cut Roof, Green Oak etc.

Contact Gary Broom

Telephone **01823 283212**

or Mobile **07776032289**

WIVEY HARDWARE

10 WEST STREET
Tel: 01984 624268

**Tools, Electrical Goods, Paint & DIY,
Kitchenware, Cookware, Seeds, Compost,
Garden Accessories, Camping Equipment,
Wickerware and key cutting service**

Monday – Friday 9 am – 5 pm Saturday 9 am – 3 pm

BURROW



**Septic Tank Owners
register your interest
in a fully-funded upgrade**

Due to the Phosphate pollution in your local river catchment we are operating a septic tank replacement scheme using private funding.

We install wastewater treatment plants that remove almost all pollutants, with funding secured from planning applicants who need to create a positive impact on the environment.

Register on our website today.



burrow-environmental.com 01935 507 508



Vehicle repair and maintenance services based in Wellington.

- Routine servicing, tyres and brakes
- MOTs and seasonal health checks
- Clutch and gearbox replacements
- Diagnostic reports and Auto electrics

Let us help to get your car SORTED!

Call us today on
07727 356728

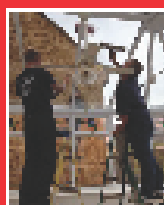
info@sortedmotorservices.co.uk
sortedmotorservices.co.uk

Unit 3B, Westpark, Wellington Somerset TA21 9AD

KEY'S CLEANING SERVICES LTD

Friendly team of reliable and trustworthy staff

FAMILY RUN BUSINESS



- + We clean all windows inside and outside and always include window sills & frames.
- + Skylights / solar panels / conservatories and any type of roof.
- + We offer regular and one off cleans.

JJK GUTTERING SERVICES LTD

- We empty, unblock and clean gutters, fascias, soffits, downpipes, conservatories & roofs.
- We can fix and replace any leaking guttering.



PLEASE CALL FOR A FREE QUOTATION

01823 272260 07885 451628

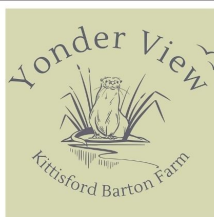
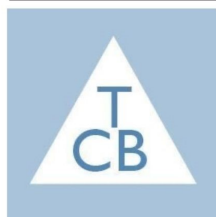
WWW.KEYSCLEANINGSERVICES.CO.UK

Email: kevscleaning@btinternet.com



THE COTTAGE BEYOND - SLEEPS 14+2
HOLIDAYS, REUNIONS AND CELEBRATIONS

Accommodation at Kittisford Barton Farm



YONDER VIEW - SLEEPS 2+2
LUXURY CONVERTED SHIPPING CONTAINER



www.thecottagebeyond.co.uk
07843529072



WIVELISCOMBE JOINERY LTD.
Quality Traditional Joinery

Contact Rob Hill
07845 756822

wiveliscombe.joinery@outlook.com



Stunning Village Hall for hire in Waterrow

A superb venue available for parties, weddings, funerals etc. can seat 80 in the hall with additional outside space

Facilities include an excellent fully equipped kitchen, large hall with a stage, meeting room and plenty of outdoor seating potential

Part day from only £30.00, whole day from just £90.00

For booking information or further details,
please visit our website at
www.waterrow.org.uk
Or ring Liz on - 01984 623431

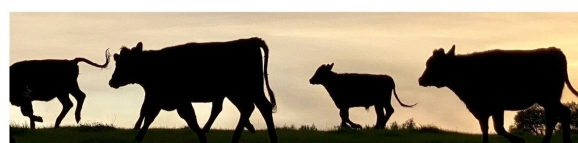


Organic Dexter Beef from Kittisford Barton Farm

£140 - 10kg Beef Box
to include a mix of:

- topside and roasting joints
- fillet, sirloin and rump steaks
- mince, stewing steak, braising steak and brisket

PLEASE GET IN TOUCH FOR ORDERS.
FROZEN BEEF SOMETIMES AVAILABLE.
WAITING LIST FOR FUTURE FRESH BOXES.



To reserve your box please speak to
John - 07872 971328
kittisfordbartonfarm@gmail.com

**FOR LOCAL
CARDS, PRINTS &
PAINTINGS**

Annie Musgrove
Meadow Farm
Greenham
TA210JW
www.anniemusgrove.co.uk
amusgrove@cantab.net



DAVID PEARCE



**MANUFACTURER & STOCKIST OF
BEE-KEEPING EQUIPMENT**

Hives and Frames

Haddeo, Bathealton, Taunton TA4 2AG

Tel: 01984 623851

**Willowbrook Nursery
and Garden Centre**

Your local family-run Garden Centre

Well stocked garden shop

Café and Tea room Bow Aquatic Centre

Pet and Bird Supplies 'Winesolution' Wine shop

Sheds B & M Camping

Situated on the A38 between Taunton and Wellington

Telephone: 01823 461324 *Open 7 days a week

www.willowbrooknurseryandgardencentre.co.uk

Janet Morris



Freelance Hairdresser

Gents, Ladies and Children

For appointment or consultation please call:

01823 660191 or 07768648244

IN SAFE HANDS



**Home and
Animal Sitting**

ARABELLA STEVENS

Combe St Nicholas, Chard, Somerset TA20 3NG

07926 174 332 • sastevens@uwclub.net



GREEN & CARTER

Water Engineers – Established 1774

Manufacturers of water powered hydraulic

RAM pumps

General water engineers Bore holes,

Water filtration and purification

Manufacturers of UV water purifiers

and chlorination plant

Telephone: 01823 672365 (24 hrs)

Fax: 01823 672950 Mobile: 07774 108884.

DEVON FENCING

BY SRF TREE SPECIALISTS

ALL TYPES OF AGRICULTURAL
AND DOMESTIC FENCING

Call Sean on:
07774 218349
01823 672765

www.srftreespecialists.com



**FLUETOPIA
CHIMNEY SWEEP
SERVICES**

Open Fires/Woodburning Stoves/AGAs
and Rayburns/Rain/Bird guards fitted

Paul Cronin Mob: 07980 743192

**LOGS+TREE
SURGERY**

- dry, seasoned logs
- large or small quantities
- cut & split as required
- tree care, felling & lopping
- plant & trailer hire

Carl Westcott
m: 07973 564759



SharperPrint

**For all your printing needs
at very competitive prices**

*Call Matt on 07906 752190
for a quote*

Defibrillators in our Community

Would you know what to do if someone in your household had a Heart Attack/Cardiac Arrest?

Sudden cardiac arrest is a leading cause of premature death. In cardiac arrest the heart's steady rhythm is often replaced by disorganised electrical activity called ventricular fibrillation (VF). The sooner VF is treated by an electrical shock (defibrillation), the greater the chance of the person's life being saved. Immediate action by members of the public can save many lives.

DIAL 999 FIRST

But, there are four defibrillators within our community which are easy to use with verbal and visual instructions and available to anyone. They are permanently located at these places and can be found using the // What3words codes below.

Ashbrittle Village Hall, on the outside wall.
blurts/flats/crouching

Bathealton Village Hall, on the outside wall.
relatives.widgets.rolled

Kittisford, New House Farm, on the wall opposite the church. *bonkers.regime.lyricist*

Stawley Village Shop, on the outside wall
messaging.servers.quaking

Each one can be removed and taken to where it is needed. **These are all accessible 24 hours a day and no access codes are required.**

Editorial Policy

Please note that the views expressed in this magazine are the responsibility of the individual author(s) and are not necessarily the views held by the editors of the Parish News.

Local information

Police Beat Team PCSO Brianna Whelan
Tel: 07761 405460 or email:
brianna.whelan@avonandsomerset.police.uk

Parish Councils

Ashbrittle - Chairman Charles Doble 01823 672365 or 672618
email: *charles@greenandcarter.com*

Bathealton - Chairman Philip Broad 07584 657106
email: *philip.broad1@outlook.com*

Stawley - Chairman Paul Musgrove 01823 672627
email: *stawleypc@stash.org.uk*

Somerset Councillors

Cllr Dave Mansell – 01984 623823 or email:
dave.mansell@somerset.gov.uk

Cllr Gwil Wren – 01823 400657 or email:
gwil.wren@somerset.gov.uk

Community Halls

Appley Pavilion and Recreation Field
– to book, ring Suzette Williams on 01823 672266 or email: *williamspfa@outlook.com*

Ashbrittle Village Hall
– to book, ring Pat Gainey on 01823 672760 or 07713 276656

Bathealton Village Hall
– to book, ring Tilly Willis on 07961 970743

Local Groups

Stawley under Fives at the Appley Pavilion.
Becky Alder Pre-schools Manager - Swallows, Sampford Arundel 01823 672342 Mon/Tuesday.
Stawley Under Fives 07707 416871 Weds/Thurs/Fri

Parish News information

The Editors and the next issue deadline date are on the back cover. Please send items for publication to the Editors in good time to ensure publication. There is only a short time between the deadline and the printing of the Parish News and late items may not be included. Please send items for publication by email *ashparishnews@gmail.com* preferably as attachments in Microsoft 'Word' format.

Advertising Our rates are £2.00 per month for a small box, £4.00 for a quarter page, £8.00 for a half page and £16.00 for a whole page. Advertising for community events, charity and church fundraising events in our area are normally carried free of charge. Occasional one-off adverts from residents in our area seeking to sell or buy an article or seeking to acquire or offer a service are also carried free of charge. In all cases the style, layout and size allocated to an advert is at the discretion of the Editors.

Editors: Maurice Stanbury 01823 672216 and Avril Silk 01823 672131; e-mail address: *ashparishnews@gmail.com*

Treasurer: Andrew Millard, Barton Barn, Kittisford, Wellington TA21 0RZ

Bank details: Account Name: The Parish News, Sort Code: 30-98-45. Acc. no. 01828373

Distribution: Pat Sweet 01823 672380

DATES FOR YOUR DIARY

June

2nd	12 noon - 2.00 pm	Pop-Up Café in Bathealton Village Hall
4th and 18th	10.00 - 12.30 pm	Books, Biscuits, Coffee and Cakes at Stawley Mill
7th	2.00 - 5.00 pm	Stawley Church Garden Party at Stawley Mill.
21st	From 9.30 am	'Walk West Tone' - walking, music, flowers with tea and cake!
21st	10.00 - 12 noon	Coffee, Cake and Chat in Ashbrittle Village Hall
25th	10.00 - 12.30 pm	Coffee Morning and 'Bring and Buy' at Springers, Kittisford
26th	12.00 noon - 2.00 pm	Lunch Club in Ashbrittle Village Hall
29th	9.30 - 12.00 noon	The Big Breakfast in the Rugby Club, Wiveliscombe

July

6th	2.00 - 5.00 pm	Stawley Festival at the Appley Pavilion
12th	5.00pm onwards	A Summer Celebration of music and singing at Stawley Mill

September

7th	2.30 - 5.00 pm	Stawley Flower and Produce Show at Appley Pavilion
-----	----------------	--

October

12th		Apple Pressing Day at the Pavilion
------	--	------------------------------------

December

18th	12 noon	Christmas Lunch Club in Ashbrittle Village Hall
------	---------	---

The bell ringers - who rang in all four churches on the afternoon of 8th May to celebrate VE Day



Left to right, seated - Penny Stanbury, Alesha Naranjit, Tansy Denham and Sue Webber.
Back row – Sarah Burns-Cox, Nigel Paterson, Laurence Webber, Jeremy Robbins, Frazer Higgins, Paul Musgrove, Richard Lewis, Lola James, Angela Medlycott and Maurice Stanbury

Next Deadline Date: Friday June 20th 2025

Editors: Maurice and Avril