



Parish news

For the Parishes of ASHBRIITLE with GREENHAM, BATHEALTON, STAWLEY and KITTISFORD

Church Services

Sunday 6th October 9.30 a.m. 11.15 a.m.	Nineteenth Sunday after Trinity Parish Communion Sung Eucharist for Harvest	STAWLEY ROCKWELL GREEN
Sunday 13th October 9.30 a.m. 11.15 a.m. 11.15 a.m.	Twentieth Sunday after Trinity Holy Communion BCP Communion for Harvest Sung Eucharist	SAMPFORD ARUNDEL ASHBRITTLE ROCKWELL GREEN
Wednesday 16th October 7.00 p.m.	A Celebration of Autumn with The Festival Choir.	STAWLEY
Sunday 20th October 9.30 a.m. 11.15 a.m. 4.30 p.m.	Twenty first Sunday after Trinity Harvest Communion Sung Eucharist Harvest Festival	BATHEALTON ROCKWELL GREEN KITTISFORD
Sunday 27th October 9.30 a.m. 11.15 a.m. 6.00 p.m.	Bible Sunday Morning Service Sung Eucharist Evensong	THORNE ST MARGARET ROCKWELL GREEN SAMPFORD ARUNDEL
Sunday 3rd November 10.30 a.m.	Harvest Festival followed by lunch at Stawley Mill	STAWLEY

Churchwardens and Clergy

Ashbittle with Greenham

Charles Doble, The Old Rectory, Ashbittle, TA21 0LQ 01823 672365
David Hanks, Manley House, Ashbittle, TA21 0LE 01823 672436

Bathealton Andrew Lyle, Road Hill House, Bathealton, TA4 2AW 01984 629013
Sarah Eustice, Oakwood, Spring Grove, TA4 1NL 01823 401248

Kittisford Annie Musgrove, Meadow Farm, Greenham, TA21 0JW 01823 672627

Stawley Penny Hare, Stawley Mill, Wellington, TA21 0HT 01823 672183
Colin Haddrell, Tucks Farm, Stawley, TA21 0HS 01823 672533

Priest-in-Charge

Reverend Andrew Barton, 2 White Oaks, Langford Budville, TA21 0RB
Contacts: Home/Office - Phone 01823 924007 or 07795 699737
Email revdbarton@gmail.com

Front cover - some very imaginative entries in the Children's class for an 'Animal made from a vegetable' at the Stawley Flower and Produce Show. Photo - Maurice Stanbury

Artists Wanted!

Do you have a painting or photograph which could be used as a cover design for the Parish News? Seasonal and local images are particularly welcome. Please send hi-res images (300dpi) to Avril at AvrilSilk@aol.com Portrait format is ideal if possible.



An Introduction

Hello everybody, it is a pleasure to be writing to you for the first time.

I have just started as the Parish Priest for Ashbrittle, Bathealton, Kittisford and Stawley, as well as Rockwell Green, Sampford Arundel and Thorne St. Margaret. This new collection of parishes is called the West Tone Benefice.

So, what to write? What shall I share? I think that is a question I would like to put to you, the reader. I would love to hear from you and understand what you would like me to share in this section of the magazine. You can see my contact details on page two, so please get in touch and let me know. Any question. Any topic. Thank you.

If you were able to come to my induction service at Rockwell Green Church on 8th September then I hope you enjoyed it as much as I did. It was a tremendously uplifting experience and a great welcome to the new Benefice.

I shared a few thoughts about my Christian journey in the Order of Service, if you would like to read a copy then please drop me an email and I will gladly send one over to you. As that journey now continues in this beautiful part of Somerset I look forward to meeting you all, listening to your joys and fears, hopes and challenges, and working alongside you to play our part in God's love for this area and all its people.

Since my earliest days as a Christian, I have had a heart for those not connected to the church but who would like to be. From my first church in Bovey Tracey to my training in Cambridge, my curacy in Tavistock and whilst working as a Chaplain, I believe passionately that the role of the church is to go out and meet people where they are and not simply invite them to where we are.

I was born in Leamington Spa and was raised as a Roman Catholic, attending services every week with my dad, and occasionally the confessional too. It was quite an eye-opening experience as a child and young person. But sadly, it did not connect with me deeply and I drifted away from the church when I went to university. It was when meeting my wife years later, a lifelong believer she would say, and whilst going through a difficult time personally, that I started to explore faith once again. We fell in with our local Anglican church and in 2005 I came to a living faith in the saving power of Jesus.

I became an ordained minister in 2012 and have enjoyed many years of ministry since as a hospital chaplain, hospice chaplain and more recently as an Army chaplain. I have just transferred from the Regular Army into the Reserves releasing the time to exercise ministry now also in a parish context. I will continue therefore as an Army Chaplain, albeit on part-time basis, serving with 6 Regiment Army Air Corps whilst taking up my role as your priest.

As I embark on this new chapter I strongly believe that, as a church, we have an important role to play in sharing the love of God and the peace of Christ with everyone in our local community. It is my belief that God will provide us with all that is needed to see lives transformed and communities grow. Please share with me your hopes and concerns for the places that you live, work and play.

My wife Sioned and I look forward to meeting you soon. If see us walking the lanes with our two black dogs Meg and Lily then please come up and say hello. It will be great to chat.

Revd Andy Barton

Kittisford Harvest Festival

Sunday 20th October at 4.30 pm

Everyone is welcome to join us in a service of celebration with the Village Festival Choir

Light refreshments after the service

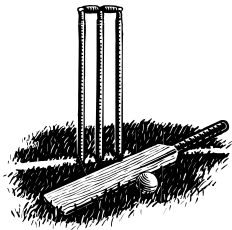


Contact Annie Musgrove for further information

Tree Guards and Stakes

I have a number of tree guards and stakes that have been used once but can be used again for your next planting. Free to anyone.

*Paul Musgrove; musy@cantab.net
or 01823 672627*



Ashbrittle, Stawley and Clayhanger Cricket Club

Dual Champions!

What an unbelievable season for the club, really showing our progression and intent to be successful, whilst maintaining our welcoming, friendly and family-orientated club values as always.

Our 1st XI finished as Division 1 Title winners, while also finishing as League Cup Runners Up. The 1st XI top run scorer was Sam Shaikh, finishing with 937 runs in all competitions, at an average of 93.70! The 1st XI top wicket taker was Callum White with fifty-five wickets in all competitions, narrowly missing out on top spot in the league by one wicket.

Promotion for the 2nd XI

The 2nd XI also had a brilliant season, finally getting a well deserved promotion to Division 3 along with the title. The 2nd XI top run scorer was Rob Popplestone, finishing with 304 runs in all competitions, at an average of 50.67.

The 2nd XI top wicket taker was a joint effort between Boris Priscott, and Leon Westcott both ending on fifteen wickets each. A fantastic effort from two of our younger players.

Thank you Rob!

Following the conclusion of our successful season winning Division 1, we would like to announce that our 1st XI Captain and Club stalwart Rob Williams will step down as captain. Rob has guided our first team through an unbelievably successful period of the club, leading us to the Division 2 and Division 1 Titles in successive seasons, only losing two league games in that time period. Rob will continue to play, but will pass on the captaincy from next season.

Everyone at the club would like to express their gratitude to one of the best leaders and captains we could have ever asked for.

Thank you to all volunteers, supporters, sponsors, players, and club members for being with us on this brilliant season for both teams. We really appreciate it!

Callum Hamer

Congratulations to all involved - Eds

Gardening Club

Our garden club trip this month was close to home, although not a place any of us had visited before. The Flower Tree at Hillcommon provides a garden to select and cut your own flowers. The business was opened in 2017 and is very much a family affair. It was started to encourage us to buy home grown flowers rather than flowers imported from all over the world by air, auctioned in Holland and then shipped to buyers in Great Britain.

We gathered in the field café coffee shop and admired some of the interesting ceramics for sale before setting off to explore. Most of the plants are grown from seeds in the nursery. This is a continuous job of transplanting seedlings to be eventually planted out in the fields and poly tunnels.

There is a specific fenced area for the public to pick and other fields where staff pick orders for florists. There is also a very large refrigerator to keep them fresh.

They supply different size buckets to fill, or price by the stem if you don't need a bucketful! There was lots of choice, even at this time of year, everything from antirrhinums to zinnias in plenty of colours, annuals, perennials and foliage. The eucalyptus had been severely pruned to keep the interesting leaf shapes and good colour.

The polytunnels, named after the owner's children, Freddie, Edith and Mabel, were well filled; one of them with some particularly good looking lime-green zinnias.

The Flower Tree is open from April to October and is well worth a visit, particularly to buy colour themed flowers.

We are very grateful to Penny Stanbury for finding this venue and arranging the visit.

Freda Parkinson



Beat Surgery Stawley Village Shop and Tearoom

Tuesday 1st October
and 26th November
9.00 - 10.00am

with PCSO Brianna Whelan
Tel 07761 405460 or email:
brianna.whelan@avonandsomerset.police.uk



APPLE DAY !



**APPLEY PAVILION,
SUNDAY OCTOBER 6TH**

**FREE APPLE PRESSING 10.00 - 3.00 pm
(£5 for use of pasteuriser)**

**BRING YOUR OWN APPLES
and BOTTLES**

**BANGERS & MASH SERVED 12 - 2.00 pm
Apple Cakes and Apple Pies for sale**

Any queries please call Rachael Oliver on 01823 672179

CHIPSTAPLE FUN RIDE

SUNDAY, 6th OCTOBER 2024

WOODLANDS FARM, BATHEALTON, TA4 2AH
(SIGNPOSTED FROM B3227 AND B3187)

12 MILES (APPROXIMATE) RIDE THROUGH FIELDS AND TRACKS, JUMPS OPTIONAL
SHORTER ROUTE OF 5 MILES (SUITABLE FOR NOVICE AND LEAD REINS)

ADULTS £18, 16 AND UNDER £14, 11 AND UNDER £10
RIDERS UNDER 14 TO BE ACCOMPANIED BY AN ADULT

START TIMES BETWEEN 10am AND NOON

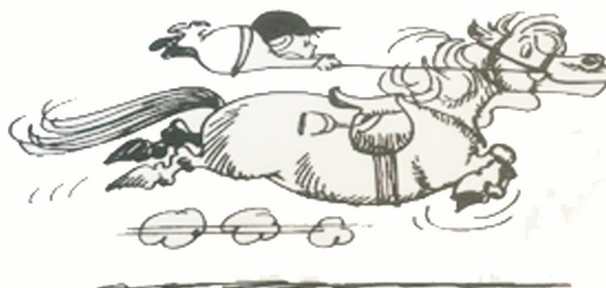
PRE-BOOKING PREFERRED

PLEASE EMAIL TO BOOK kate123allibone@hotmail.com or 0777 2541847

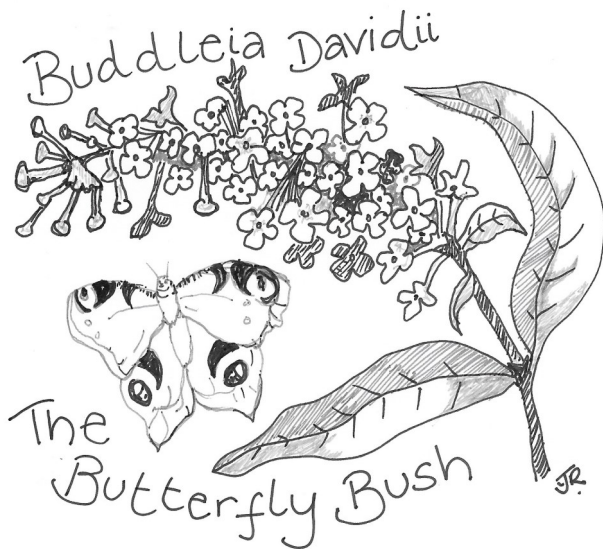
ROSETTES TO ALL

CAT DOWN PHOTOGRAPHY

HOT AND COLD REFRESHMENTS



Beastly but beautiful



I started writing this back in July when it was, perhaps, a little more appropriate. Looking out of my window today, on a sodden wind-blown September day, and seeing this exceedingly accommodating shrub **still** in flower made me decide that perhaps it remained a relevant subject and a worthy emblem of summer's loosening grip on the season.

I am talking about Buddleias. But not just the ubiquitous *Buddleia davidii* which was originally introduced from the Orient as a 'choice' exotic. Its seedlings now follow railway lines and motorways, take over urban waste land and have the power to demolish your chimney stack or wall if they seed themselves into a loose bit of masonry.

In much of Europe and North America it is classified as an invasive alien. But there are many other species with finer manners and more restrained behavior, some of which I will outline below but firstly I feel I really must say a little more about the 'common' Buddleia, a weed though it often is, as many of its cultivars certainly have some saving graces.

I remember a vast Buddleia under my bedroom window when I was a boy and during the summer I could hang out and touch the upmost flowering spikes. I vividly recall the honey-scent of those mauve-pink inflorescences on sun-scorched afternoons and seeing clouds of Tortoiseshell, Peacock, Red Admiral, Painted Lady and Comma butterflies.

It literally hummed and buzzed with bees, flies, silver-Y moths and other insect life in a way that few other flowering shrubs could boast. A couple of years ago a friend gave me a hard-wood cutting of a variegated form, *Buddleia davidii* 'Harlequin' which rooted exceptionally easily (as most Buddleias do) and grew away strongly. Now,

I'm not a great fan of variegated foliage but the deep purple flowers and silver stripe on the leaves along with the neat, not overly vigorous form, won me over. And it created a great spot to undertake the annual Butterfly conservation trust 'Big Butterfly Count'.

The cultivars 'Pink Delight' and 'Black Knight' are exceptional forms with huge panicles of rich pink and dark purple flowers respectively, and as with all *davidii* varieties, they respond well to hard pruning early in the spring. I find it is better to reduce growth on a larger shrub in the late autumn, by about half, then complete the job in spring as winter gales can produce a lot of 'wind-rock' which when combined with high rainfall can bring about an early demise.

Of the many other species available I will concentrate on the easier and more hardy, as there are quite a few which are tender or require shelter and resent our increasingly wet winters.

Buddleia x weyeriana (globosa x davidii): an attractive shrub with soft yellow, scented flowers, flowering later than *davidii* but just as attractive to butterflies. Considering its parentage, it really is a much more refined plant overall - its other parent, *Buddleia globosa*, with its 'pom-pom' orange flowers is seemingly reviled - something about orange-flowered shrubs (such as *Kerria japonica* and some of the deciduous *Azaleas*) which makes them eternally unfashionable.

Buddleia 'Lochinch': a *davidii x fallowiana* hybrid discovered as a chance seedling at Lochinch castle around 1940. It combines the long, scented violet-blue flowers with their characteristic 'orange' eye of *davidii* with the graceful, arching habit and soft, silvery, felted foliage of *Buddleia fallowiana*.

Buddleia alternifolia: the 'alternate-leaved Buddleia', this plant originally came from China and Tibet and although not brought into cultivation in the west until around 1915 by Reginald Farrer, it is not a widely grown garden plant, enjoying an RHS award of garden merit in 1993. It has long, arching stems with grey-green leaves and scented lilac flowers clustered along the stems in pendant racemes. The cultivar 'Argentia' has significantly more silvery leaves, adding to its graceful appearance. As a shrub it can become a little congested so regular, judicious pruning to keep its shape open is advisable.

Buddleia colvillei 'Kewensis': OK, this one is a bit tender - it really needs a sheltered wall or glass protection but is ok down to -10°C. Originally from Yunnan, Sikkim, Nepal, Bhutan and parts of India, this cultivar was first identified at Kew. It has green, soft felted leaves, a graceful arching habit and dark red, scented flowers with a white throat.

John and Julie Ridgley

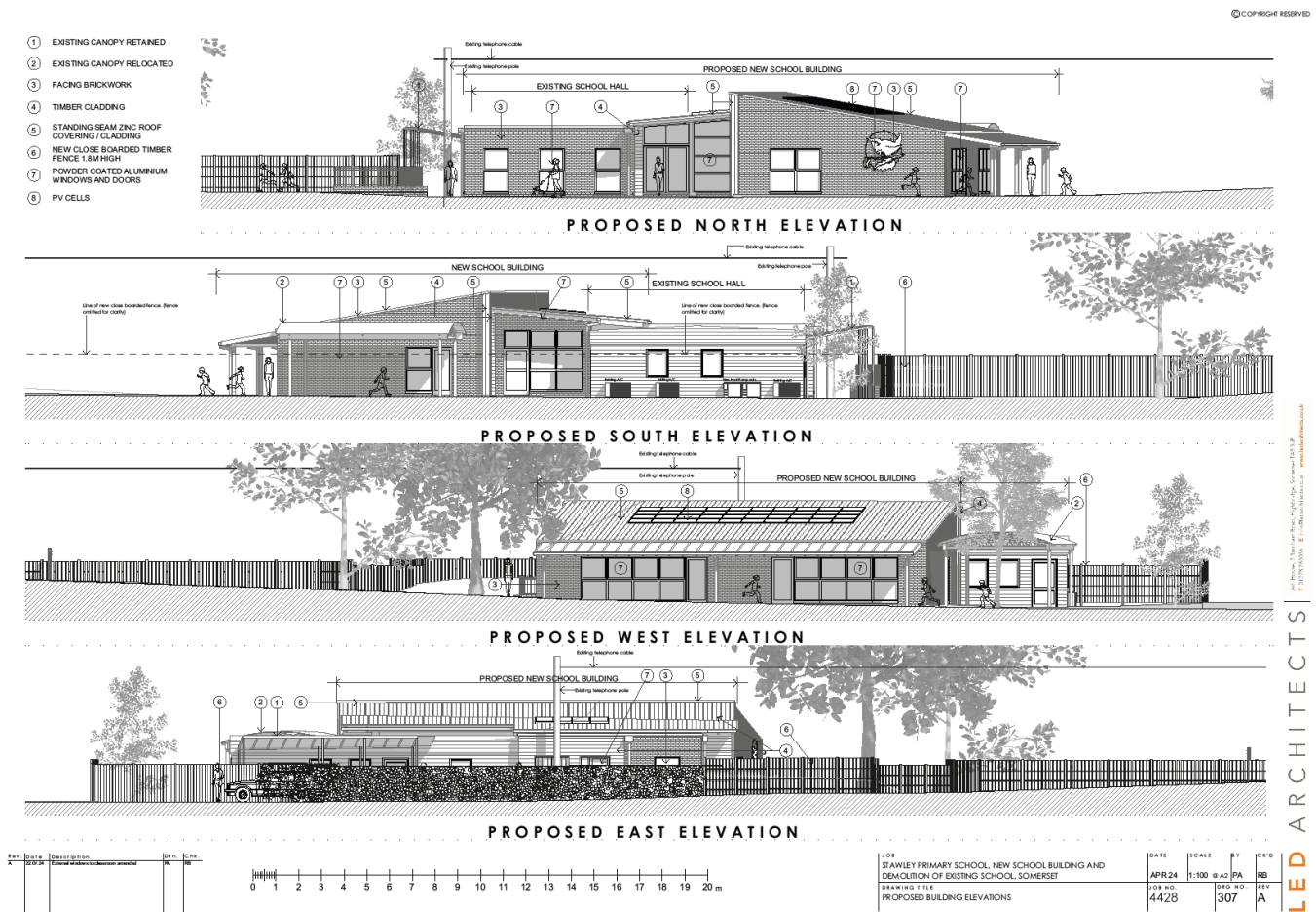
Stawley School

A New School Year and some very exciting developments

The start of a new school year is always an exciting time. Children moving up to new classes; new children starting school and new topics to be covered. There always seems such a lot to sort out as well: tray labels, displays, seating plans, lesson plans, new equipment to be sorted... the list seems endless!

This year is even more exciting than most as there are some significant changes taking place at school. You may have heard the news already, but for those that haven't... We're having a new permanent school building!!

Our current building is very much past its sell by date and, rather than been listed, it's very close to listing! The school has been very fortunate to receive a grant from the government to build a new school.



Planning has gone in and companies have already started to come round to tender for the project. We are hoping that building will start around October time and be finished towards the end of the school year. The idea is to build the new school around the current hall while we use the old buildings and then once the building has been completed, move into the new building whilst demolition of the old building takes place.

Future Open Community Day

Once the building is fully open, we will hold an open day for the local community where you can come and have a look around the new school. It would also be great to see some past pupils and find out what they are now up to.

An exciting year lies ahead!

David Stirzaker



Quaker Meeting for Worship at Spiceland

**We Meet for
Worship at Spiceland every Sunday at
10.30am till 11.30am - this is a blended
Meeting also available on Zoom -
All are very welcome.**

2024 Swarthmore Lecture - Getting What We Deserve? Imprisonment and the Challenge of Doing Justice

In the 2024 Swarthmore lecture, Ben Jarman explored the myth and reality of how society responds to serious crimes, charting the uses and abuses of society's responses to crime: retributive punishment, rehabilitative intervention, public protection, and calls for incremental or radical reform. Drawing on personal and professional experiences, Ben invited Friends to reflect on where current prison conditions belong in the longer flow of Quaker witness on penal reform, and to asked: who (if anyone) gets what they deserve from the institutions we have? Find out more information about the Lecture at www.woodbrooke.org.uk/research/swarthmore-lectures/

Watch the lecture on YouTube - <https://www.youtube.com/watch?v=vwqolkC0nnc>

A Celebration of Autumn Stawley Church

Wednesday 16th October
7.00pm



All are welcome to join the Village Festival Choir, led by John Young, in singing some favourite music and sharing readings to Harvest and the arrival of autumn.



Harvest Festival Lunch

at
Stawley Mill

On Sunday 3rd November

Following our Harvest Festival at
10.30am at Stawley Church

£10.00 per head
(including a glass of wine)

Please contact Penny Hare on 01823
672183 to book your place.



Coffee, Cake and Chat

Ashbrittle Village Hall

Saturday 19th October

10.00 - 12.00 noon

Unlimited Coffee and Delicious Home Baked
Cakes available, for just £4.00.

Please come and join us - all welcome !

Village Oil Group

The next oil delivery is due on
Wednesday 9th October

To place an order, please email:
judy.milne@btopenworld.com or contact
Judy or Michael Milne on 01823 672205 by the
Monday before the Wednesday delivery
New members always welcome

Stawley Village Shop & Tea Room



Opening hours

Monday to Friday 8.00am to 5.00pm

Saturday 8.00am to 2.00pm.

From **Saturday November 2nd the hours will be 8.00am to 12 noon.**

Sunday 9.00am to 11.00am

The Post Office is here every Thursday 11.30am to 1.30pm
Contact: 01823 674361 or email shop@stawleyshop.com

The volunteers at the Shop and Tearoom are proud to report that a recent visit from the **Food Hygiene Inspector** resulted in a continuing **Level 5 rating**, which is very good news for us all.

The volunteers and Vikki are continuing to work hard to maintain the Shop and Tearoom at the usual high standard, and thanks once again for their efforts from The Stawley Community Association. We have welcomed some new volunteers to the Shop, but we are always pleased to have more helpers: it doesn't have to be working behind the counter, there are always small tasks to be done, so if you have even a couple of hours to spare, please see if there is something you can do to help: the more, the merrier.

Please come into the Shop and Tearoom and see what we have on offer to add to your weekly groceries, and of course, the wonderful selection of cakes and slices to take away, or eat in with a cup of tea or coffee.

We look forward to seeing you!

We are still **receiving donations towards our start-up fund**, and are well past the half-way mark to our £10,000 target. Once again, a very big thank you to those who have generously given to this cause. If you can support, no matter how large or small an amount, please donate either by bank transfer to:

Bank: HSBC

Sort Code: 40-46-05

Account No: 41236350

Account Name: Stawley Community Association Ltd

Or you can make a donation on line at www.gofundme.com/s

Just put "Stawley Village shop" into the search bar, it is very easy to make a donation using your card. If these methods are not for you, a cheque, or a cash donation in the green collection tin next to the Shop till, are convenient alternatives.

All donations are very welcome

Bathealton Parish Council.
Minutes of Meeting Thursday 22nd August

Present: Phil Broad (PB) Chair, Steve Cottrell (SC), Jess Bunn (JB), John Ridgley (JR) Treasurer, (JR), Karen Tarsey (KT) minutes, Shelley Ward (SW), Simon Monty (SM).

Declarations of interest: none.

Minutes: no matters arising.

Planning applications: Silage Barn 03/24/0002. JB to look at the planning and report at next meeting.

Financial matters:

Balance in account: £3218.73

Projected spending: Parish Council Indemnity Insurance. Other spending to be discussed at next meeting.

Review of Parish Council's Budget including financial plans for 2024/2025 and successive years:

- i) Continue support of the defibrillator located at village hall. JB advised that when this was originally installed all maintenance would be free of charge however this does not seem to be the case.
- ii) Continue maintenance of churchyard.
- iii) Continue monitoring of public footpaths, styles, and signage and provide new signage e.g. way markers as required.
- iv) Support for annual charitable causes. To be discussed at future meeting.
- v) Village Hall hire.
- vi) Parish Council Indemnity insurance. PB liaising with insurance company for a quote, renewal due 5.9.24.
- vii) Future Precept: to be discussed at future meeting. SC would like to see accounts before agreeing precept.

Roads: Residents are encouraged to identify any problems i.e. pot holes, condition of surface to Somerset County Council. PB and JB have reported potholes which have yet to be repaired.

Concern has been raised regarding the speed of vehicles through the village. A suggestion was made to have "twenty is plenty" signs through the village. SM advised that the Local Authority needs to be petitioned to redesignate the road from the current national speed limit to a more appropriate limit for a village. He reported that there are agencies that help support communities to raise these petitions with Local Authorities. SM will pass further information on to PB on how to move forward.

AOB: JR unfortunately has to step down as treasurer due to other commitments however is happy to stay on the committee. The Parish Council currently has four members, but should have five members. Any expressions of interest from Bathealton residents to become a parish councillor to: philipbroad5@gmail.com.

Next meeting: Thursday 28th November 2024, 7.30pm at Village Hall.
Meeting closed at 8.20

Karen Tarsey (Minutes Secretary)

Pat's Guitar Services



Re-string
Professional set ups
Fret dress
Re-fret
Wiring alterations & pickup mods
Repairs

Professional guitar servicing and repairs.

Contact: patrick.weeks@btinternet.com
07724338853

The Old Mill, Tracebridge, Wellington,

News from the Parish News

Donations received from:

Ann Hendy

Suzette Williams

Anonymous donors in the Village Shop

Thanks again, for your kind support. Donations may be left at Stawley Shop or sent directly to the Treasurer. Details inside back cover.

Andrew Millard, Treasurer

Stawley Parish Council

There will be a meeting of the Parish Council at 7:30pm on October 8th in Appley Pavilion. All parishioners are welcome to attend.



Seasonal Help Wanted

Various positions available including:

Making and decorating Christmas wreaths and mantles,

Serving customers in the Christmas shop.

Help harvesting & selling Christmas trees.

Assisting delivery of trees.

Hours to suit (daytime, evening & weekend)

Throughout November and December.

Age 16+

Please contact us by email for more details

info@langfordlakes.co.uk



Bathealton Village Hall

POP UP CAFÉ

Why not 'drop in' to our bi-monthly 'Pop up' A friendly warm space: time to catch up with old friends or meet new ones.

When: 7th October and 21st October 2024
4th November and 25th November
2nd December and 16th December

Time: we will serve food from 12 noon till 2pm

Why: make new friends or catch up with old; the new are silver and the old are gold.

Examples such as: home-made soup; pies; sausage rolls; and a selection of homemade savoury dishes: Handcrafted sandwiches: artisan bread, homemade cakes, deserts with unlimited fresh cafetiere of coffee or a selection of teas:

Please call Dee or Del to reserve a place 07355 810132 or just drop in
Cost £8.00 with a percentage going to the village hall

VITAL VEG, FRUIT and FLOWERS

Veg, fruit and cut flowers organically grown on our local smallholding.



Picked on the day and delivered to your door or for sale at our market stall at White Post Cafe/Nursery on Thursdays and Saturdays.

A wide range of luscious produce: from the more familiar fruit and veg to the less expected melons and salad with herbs and edible flowers.

A large range of vibrant cut flowers for all occasions.

Contact Juliette on 07928081430 or email juliette.durance@hotmail.co.uk

Curry by candlelight

A fabulous evening
of delicious curries



(meat, vegetarian and vegan options)

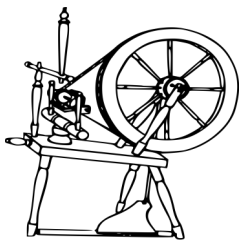


£10

Saturday 5 October 2024 at 7pm

Bring your own drinks

Bathealton Village Hall TA4 2AN



Spinning and Woolcraft Group

Meeting arrangements will be confirmed in advance when the reminder email is sent out.

If you would like to join us please contact me and I will add you to the mailing list. Perhaps you would like to come along and learn to spin with us?

Or bring along your knitting, crochet or other needlecraft project. All welcome.

Next Sessions

Tuesdays: 1st and 15th October
5th and 19th November
at 2.30pm

Contact Pauline: on 01823 672222 or
email pjw200355@gmail.com

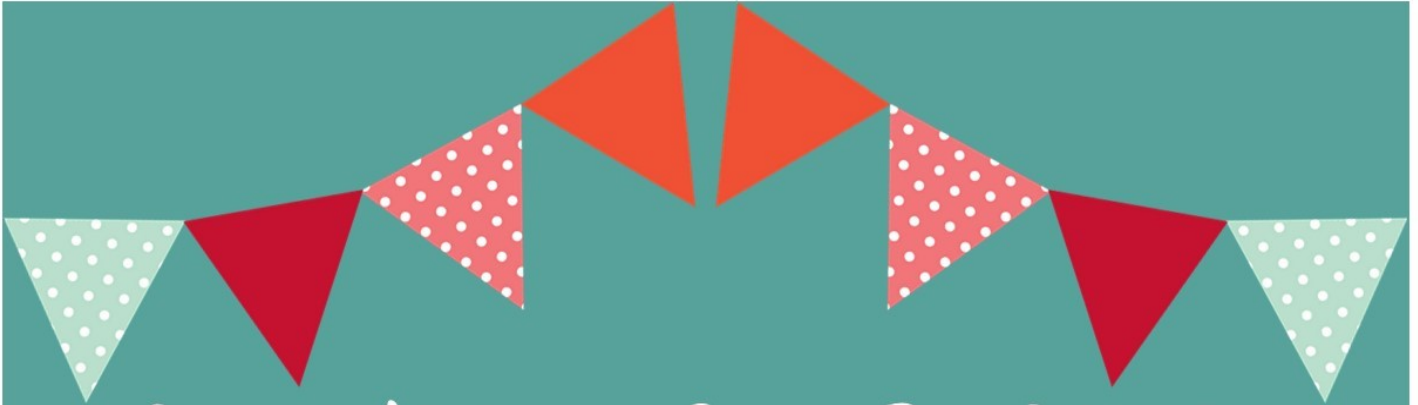
FURNITURE MAKER

MICHAEL COOPER STUDIO

Traditional fine woodwork.
Designed and crafted to commission.



07919 020886
hello@michaelcooper.studio



WIVELISCOMBE CRAFT MARKET

LOCALLY MADE ARTS & CRAFTS

COMMUNITY
CENTRE
2024

26TH OCTOBER
23RD NOVEMBER
14TH DECEMBER
9.30AM - 12PM



Follow us on Instagram [wiveycraftmarket](#)
email wiveycrafts@gmail.com



STAWLEY MILL

JOIN US FOR
BOOKS & BISCUITS
COFFEE & CAKE



1ST & 3RD WEDNESDAY OF EVERY MONTH

2ND & 16TH OCTOBER

10AM—12.30PM

IN AID OF CHURCH RESTORATION FUND



"In October we will concentrate on cookery. If you fancy some different recipes, come along and see what you can find!"

With the winter ahead of us, we need to think of warm and tasty! We would love to see you anyway. All used books, so not expensive."

Lunch Club

Our August meeting was a little different from usual. Several of our regulars were on holiday or on grand-child minding duties. There was no Speaker. But, as usual there was a lot of talking and laughing and for those in the mood, a quiz concerning our past experiences. This resulted in some incredulity and a little controversy. The winning table shared the box of chocolates

Our next lunch is on Thursday, 31st October. The speaker is local resident Alec Medlycott, who will talk about his work as a young diamond exploration geologist in war-torn Angola in the early 1970s. He will speak briefly about the formation of diamonds and their transportation to the earth's surface and the processes to find them.

He writes, 'I will discuss the logistical problems associated with working in such a vast and underdeveloped country, the challenges to be overcome and some of the successful outcomes'.

If you would like to join us, please let me know by the end of Monday 28th October, so I can give Jackie White the numbers for lunch.

My contact details for booking are: email harlingdelia@gmail.com or telephone 01823 672203.

Please note - We always meet on the last Thursday in the month - starting at 12.00 noon promptly from now on!! The exception is Christmas. This year we will hold our Christmas lunch on Thursday 12th December. More details later.

Delia Harling

Broadband

The Mobile Boost scheme that provides equipment to residents and businesses to help them benefit from a better mobile phone signal has relaunched with a £430,000 investment through the Heart of the South West Local Enterprise Partnership's Growth Deal.

The scheme offers vouchers of up to £1,300 towards technology to help improve indoor mobile coverage and connectivity. The scheme is available to businesses and homes in Somerset, and Devon,

More information can be found at <https://www.connectingdevonandsomerset.co.uk/mobile-boost-scheme-re-opens/>

Ashbrittle Village Hall

Available for all your functions and parties.

Charges: Daily hire £50
Half day £25
Skittle Alley £10

Tables, chairs, benches, cutlery and dinnerware also available for outside hire at reasonable rates.

Contact Pat Gainey on 01823 672760
or 07713 276656

Mobile Library

at

Greenham Bridge

Next visits: 8th October
and 5th November

10.00 - 10.20 a.m.

— THE —
GLOBE INN

APPLEY

A wickedly warm welcome awaits you
at The Globe Inn this autumn



Eat, drink and be scary at our
Halloween Spooktacular
on Saturday 2nd November from 7pm til late

**DON YOUR GRAVEYARD GLADRAGS AND JOIN IN THE GHOULISHLY GOOD FUN
AT OUR HALLOWEEN PARTY.**

**GET YOUR FREAK ON WITH KARAOKE, FANCY DRESS COMPETITION PRIZES
AND A FRIGHTFULLY GOOD RAFFLE.
(ADVANCED BOOKING ESSENTIAL)**

**TICKETS COST £15 EACH (AVAILABLE FROM THE BAR)
AND INCLUDE A DELICIOUS BUFFET SUPPER,
WITH PROCEEDS GOING TO THE TAUNTON VALE HARRIERS.**

Open

Wednesday to Saturday 12 noon - 11pm
Sunday 12 noon - 4pm

Food

Served from 12 noon - 2pm & 6pm - 9pm

📍 Appley, Stawley, Wellington, Somerset, TA21 0HJ

☎ 01823 673147

✉ stuardurston@hotmail.co.uk

📍 The Globe INN Appley

**CHECK OUT OUR FACEBOOK
PAGE FOR ANY CHANGES
TO OPENING HOURS**

Stawley Flower and Produce Show

This has been a challenging year for gardeners and growers. Super-hungry slugs devoured more than their fair share of plants in the spring, the night-time temperatures were often below 10C, the sun seldom shone and the rain was often torrential. However, despite all these things, or maybe because, there was a tremendous show of produce at the show.

The Pavilion committee, headed by Suzette Williams, produced a wonderful selection of home made cakes and teas which were enjoyed with a great British spirit whilst sheltering from the heavy rain under the gazebos.



The Wiveliscombe Ukulele Band was great and an excellent addition to the day. Sally Scott was thanked for twenty years on the Pavilion Committee and presented with a pair of lovely roses and pots.

The Judges were Ann Heard and Lesley Garner; they had a sticky time sampling all the delicious looking chocolate cakes and other goodies. Many congratulations to Pat Gainey for winning the Cothay Cup for the most points of the day.

The other winners were:

Vegetable Award	Maurice Stanbury
Fruit Award	Sue Jacoby
Flower Cup	Pip White
Produce Award	Kate Hollaway
Cookery	Pat Gainey
Croft Bowl	Liz Burt
Art Award	Jasmine Burrow
Photo Award	Pat Gainey
Rossholme Cup	Niall Ranson
Chair's Cup	Liz Burt
Fun Prize	Suzette Williams

Children's Prizes

Rossholme Jnr. Cup	Zara Ranson
Special Prize	Nina Ratnayake

After the prize giving Chris Clapham from Stags auctioned off the produce and made £117. I would like to say a big thank you to the Pavilion Committee and to Pat Sweet and Anna-Lisa De'Ath as well as the usual helpers who made it all happen.



Who could resist the offer of a 'Pimms and Palova' or even a humble cup of tea. Whatever the order, the willing band of helpers in the kitchen delivered with a smile.

Finally, thank you all for coming and, despite the weather, making it a really good village family occasion. Next year we are due some sunshine!

Sue Jacoby

**SORTED MOTOR
SERVICES**

Vehicle repair and maintenance services based in Wellington.

- Routine servicing, tyres and brakes
- MOTs and seasonal health checks
- Clutch and gearbox replacements
- Diagnostic reports and Auto electrics

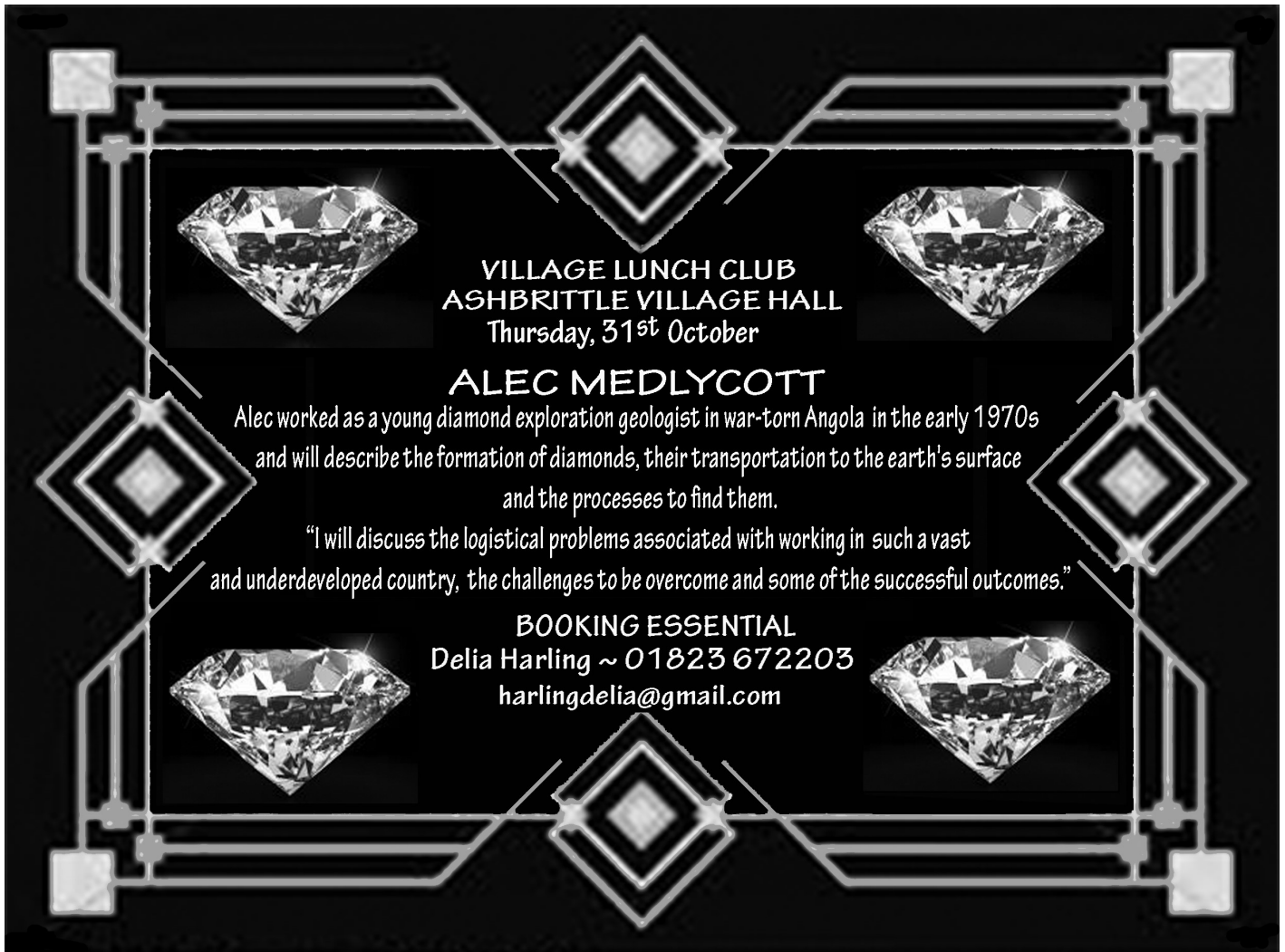
Let us help to get your car SORTED!

Call us today on



07727 356728

info@sortedmotorservices.co.uk
sortedmotorservices.co.uk

Unit 3B, Westpark, Wellington Somerset TA21 9AD




VILLAGE LUNCH CLUB
ASHBRITTLE VILLAGE HALL
 Thursday, 31st October

ALEC MEDLYCOTT
Alec worked as a young diamond exploration geologist in war-torn Angola in the early 1970s and will describe the formation of diamonds, their transportation to the earth's surface and the processes to find them.
"I will discuss the logistical problems associated with working in such a vast and underdeveloped country, the challenges to be overcome and some of the successful outcomes."

BOOKING ESSENTIAL
 Delia Harling ~ 01823 672203
 harlingdelia@gmail.com


**Coffee
Morning**



Thursday 24th October
 at
Church Cottage, Stawley
10.00 - 12.00 noon
 Bring & Buy, Raffle
 in aid of
 St. Michael's Church, Stawley

**Traditional
Harvest
Supper**



**Ashbittle
Village Hall**
Friday 25th October
7.30 p.m.
Price: £10 Per Head
Bring Your Own Bottle
 Please book with John Dawes 01823 672204
 or Pat Gainey 07713 276656

Squirrel problems

Though non-native, the grey squirrel has become a familiar sight in the UK, eliciting reactions ranging from “what endearing creatures!” to frustrated strings of expletives. Over the past several months, those with woodland, newly planted trees and even soft fruit seem to hold the latter viewpoint. Multiple people mentioned the unusual extent of grey squirrel damage this year: larger areas of bark stripped from mature trees, higher damage and demise of young trees and persistent consumption of garden produce. This article attempts to answer the questions “Why has squirrel damage been so bad this year?” and “How can we address it?”.

Grey squirrels were introduced to the UK in the late 1800s as exotic pets and for release on large country estates as “ornamental animals”. They were imported in small numbers over 150 years and quickly spread throughout Britain and Ireland due to fast breeding rates and cross-country transportation by land-owners who desired these beautiful, unusual animals on their estates. This, of course, was before anyone understood the impact they would have on the local landscape.

In our parish, perhaps their most detrimental impact is caused by bark stripping. Consumption of tree bark is not typical in their native North America, so why does it occur here? The most promising theory is that normal food sources (nuts, seeds and fruit) do not provide sufficient calcium here so they must self-medicate with tree bark to address a calcium deficiency (which weakens muscle and bone leading eventually to paralysis and death).

This hypothesis is supported by the timing of peak bark-stripping which typically occurs in late April to July, when calcium levels are highest in tree bark and calcium is vital for breeding females and growing juveniles. Additionally, grey squirrels’ gut microbiome allows them to access calcium in tree bark, something which red squirrels are unable to do.

Other calcium sources may be available during this time of high calcium demand but more difficult to obtain. Bird eggs are a good source but evading parents may be energetically costly with risk of injury. Grey squirrels are known to gnaw on bones, antlers and calcium carbonate rocks in North America but these potentially rich sources of calcium may be irregularly available here, especially in areas which are “tidied”.

If squirrels are bark-stripping for calcium, the recent increase in squirrel damage may be due to a warm, less harsh winter. Mild weather could result in earlier, more successful breeding and higher juvenile survival. Additionally, trees would start growing earlier leading to a longer season of

high calcium bark. In such a case, trees would become attractive earlier, for longer and to greater numbers of squirrels all in need of calcium.

The traditional approach to reducing squirrel damage, is population reduction or elimination by shooting (targeted but labour intensive) or trapping (live trapping with immediate dispatch is most humane, targeted, highly effective but labour intensive).

Regardless of method, eradication may not be a viable option due to the wide range and abundance of grey squirrels. In fact, culling often leads to increased reproductive rates alongside immigration from surrounding areas. Studies showed that when forest patches were cleared of squirrels, they were recolonised in as little as four weeks. This indicates that the best chance of reducing tree damage requires intensive population control timed to occur just before or during the expected peak of damage. The effectiveness of this method can be reduced by nearby areas with potential squirrel colonisers making it less successful in smaller management areas.

The reintroduction of predators such as the pine martin has been successful in areas of the UK and research into oral contraception may soon provide a cheap, humane, low-labour method of population reduction. Unfortunately both of these options are currently unavailable in this parish.

Given the limits of population control for reducing squirrel damage, an interesting approach to take (alone or alongside population management methods) would be to provide other easily available sources of calcium such as bone, antler and calcium carbonate around vulnerable trees. Although we haven’t yet found information on the effectiveness of this method for grey squirrels, similar wildlife conflicts have been resolved by providing the species causing damage alternative sources of the resource it was seeking. A low-labour, cost effective, humane solution. Could it work?

Frazer Higgins and Alesha Naranjit

Rainfall Statistics (inches) for August

2020	2021	2022	2023	2024
4.64	2.20	2.13	2.87	0.94

August has been the driest August since local records began in 2000. Only August 2009 came close with 1.47 inches, however, it didn’t get to the top in the contest for driest month in 2024 - that spot is still held by June (0.79 inches).

Val Coots



Waterrow Village Hall Film Night

Saturday November 23rd 2024

6.30 pm start

**Waterrow Village Hall,
Waterrow - TA4 2AX**

The excellent film **Saving Grace** will be shown at the Film Night. Featuring an all-star cast this

is a fantastic, feel good film. **A delicious selection of soups and rolls** will be served along with the ever popular **dessert selections**. Please bring your own drinks.

A free raffle ticket strip is included in the price. Simply keep and exchange the ticket stub on the door. There are some great prizes to be won at no extra cost!

Ticket Information: Tickets can be purchased from: Liz Kilbride at St Andrews café on Thursday Mornings. Alternatively you can call - Sarah on 01398 361202, or Liz on 01984 623431.

Priced at only **£10 for adults - £5 for children** under 12

Please note Tickets should be purchased by the 17th Nov

We look forward to seeing you there!!!





CHIMNEY SWEEP

Tim Herman

07543 506652

- 🔥 Insurance approved certificates issued
- 🔥 Public liability to £5 million
- 🔥 CCTV inspections
- 🔥 Birds nests / blockages removed
- 🔥 Fire rope replaced /stoves serviced
- 🔥 Fire bricks replaced
- 🔥 Carbon monoxide alarms installed

tim@blackdownchimneysweep.co.uk
www.blackdownchimneysweep.co.uk



Wiveliscombe
Lunch
Club

Mondays from 10.30am at
Wiveliscombe Community
Centre

Come and join us for an incredible, two
course, home cooked lunch for just £5



We have many activities, cards, dominoes,
chair Pilates, crafts, a warm place to read
or just come for a cuppa and a chat!
Bring a friend or family member, the more the merrier,
just let us know in advance!

To book a place and for further information
please email: wiveylunchclub@gmail.com
or ring Eileen 01984 624374

BURROW



**Septic Tank Owners
register your interest
in a fully-funded upgrade**



Due to the Phosphate pollution in your local
river catchment we are operating a septic tank
replacement scheme using private funding.

We install wastewater treatment plants that
remove almost all pollutants, with funding secured
from planning applicants who need to create a
positive impact on the environment.

Register on our website today.



burrow-environmental.com 01935 507 508



Dog Training

- Reward based methods
- Accredited Trainer
- 121 Sessions
- Group Classes

- allforwoofs.co.uk
- allforwoofs@gmail.com
- 07749 261 772



The Bowen Technique

Kate Weeks cert ECBS MFHT MBTPA
Muscle and Fascia release.

A gentle, intelligent approach to treating a wide range of muscular skeletal and systemic issues, including;

Back pain, neck pain, shoulder problems, headaches/migraines, TMJ problems, bursitis, fasciitis, SPD, pelvic issues and infant colic to name but a few.

Safe for all age groups and during pregnancy.
Bowen specialist with 20 years experience.

Clinics held at The Terrace, Taunton.
01823 338968/07721 462096
kateweeksbowen@btinternet.com

OLD MAN OAK
THE OLD MILL TRACEBRIDGE WELLINGTON SOMERSET TA21 0HG
07753 814553

VENISON FOR SALE
MINCE, DICED, STEAKS, JOINTS
All naturally harvested!
Bespoke orders fulfilled too - just call me to ask.
If you'd like to go on the Whatsapp group, please let me know. Ant.

Curt's
Cleaning Services

We are a family run business covering all aspects of interior & exterior cleaning to a very professional standard.

Our cleaning services:-

- Carpets & upholstery
- Windows, solar panels, conservatories
- Pressure washing driveways, patios, paths & decking
- Gutter clearing
- Gutter fascia & soffits
- Roof & treatment scrape & steam
- Render
- Caravan cleaning
- Covering domestic & commercial cleaning

To get your free no obligation quotation call us today via
07531 22021
www.curtscleaningservices.co.uk

Wivey Link

Going places.....

Wivey Link offers a community run transport service for those of any age with out easy access to a car. We can take people to health and medical appointments as well as social trips, shopping, hairdressers etc.



- Door to door transport service operating from Wiveliscombe
- We cover all surrounding Parishes as well as Taunton and Wellington
- Wheelchair friendly cars
- Fares are very reasonable and bus pass holders get a concessionary rate.

For more information on using Wivey Link, telephone 01984 624666
Lines open: Mon—Fri 9.30 am to 1 pm Answerphone out of hours



WIVELISCOMBE AREA PARTNERSHIP
Wiveliscombe House, The Square, Wiveliscombe, Somerset TA4 2JT
Registered in England and Wales No 4351175 Charity No 1132983
Supported by Somerset West and Taunton Council and Wiveliscombe Town Council



Cleaning and Home Help

One off or regular jobs

General cleaning

My cleaning products or yours

End of tenancy cleaning

Help with shopping

Dog walking

And much more

References

available

Call Sarah on

07772 761677



Home & Garden Services



Emma

Are you finding yourself:

- 'Struggling with the juggling'?
- Needing someone experienced with a wide range of physical, mental and neurological health issues and sensory loss?
- Or are things just starting to seem more difficult these days?

Here is what I have to offer you:

Home: Spring cleaning, Ironing and One off. Food Prep

Garden: Maintenance, Allotment, Clearance

Supporting your independence: taking care of jobs that are getting tricky or empowering you to overcome the barriers yourself!

Decluttering & sorting: sensitively supporting you to make your own choices

Admin and Computer Work: organising and dealing with a whole range of tasks or helping you make better use of your computer/device

Emma Hurford

Living Well – Support, Home Help and Relief Care

indianamaish@hotmail.com 01823 672003

WELLINGTON PEST CONTROL

WASPS * RODENTS * MOLES

30 YEARS PROFESSIONAL EXPERIENCE

YOUR PEST CONTROL NEEDS DEALT WITH AT AFFORDABLE COSTS
THAT REFLECT OUR SERVICE TO LOCAL CUSTOMERS

RELIABLE RESPONSE FROM A FRIENDLY, QUALIFIED PEST TECHNICIAN

07731 549669

Kim White D.O.

Registered Osteopath

**Freathingcott Farm, Holcombe Rogus,
Wellington TA21 0NG**

For appointments please contact the practice on:

01823 672925



Sympathetic repair and restoration of historic buildings

- * HISTORIC BUILDING CONSERVATION AND RESTORATION SPECIALISTS
- * TRADITIONAL LIME RENDERING, POINTING AND INTERIOR PLASTERING
- * STONE CONSERVATION AND MASONRY REPAIRS
- * FAÇADE RESTORATION AND PAINT REMOVAL SYSTEMS
- * ROOFING AND LEADWORK
- * TIMBER WINDOW REPAIRS
- * TRADITIONAL CARPENTRY AND BESPOKE JOINERY
- * KNOWLEDGE AND EXPERIENCE OF WORKING ON ALL FORMS OF LISTED BUILDINGS, INCLUDING ECCLESIASTICAL

www.thewessexconservationco.co.uk
info@thewessexconservationco.co.uk
George Hannon: 07727 177467
Will Stevens: 07815 464908
14 George Street, Wellington, Somerset TA21 8JA



Our company is accredited by the guild of master Craftsmen, this means we will abide by their code of practice so you can be assured of the highest quality of workmanship at a reasonable price, giving you complete peace of mind at all times.

Home Aerials

Tel: 01984 623232

homeaerials@gmail.com

All Types of Aerials and Satellite
Digital Upgrade Specialists
Digital Boxes Supplied and Fitted
Wiveliscombe & Surrounding Areas
Local, Reliable, Experienced Engineer

**Contractors for Local Authorities
and Housing Associations**

**A Family Run Business
for over 39 years
Please contact Lulu or Martin Milton**



**Beautiful flowers - grown locally and
sustainably**

Local gift bouquet delivery and
flower subscriptions
(March – November)

Natural Farewell flowers

Weddings and Events

Flower workshops, demonstrations and talks

Contact Jan on 07525948053 or for more
information or visit:

www.blueshedflowers.co.uk

PHILLIP HUMMEL PLUMBING & HEATING

All domestic plumbing work undertaken.
Oil Boiler service and installation.
Oil Aga / Rayburn Service.
Oil tank service and installation.
Bathroom design and installation.
Bathroom and Kitchen Tiling.
Underfloor heating installation.
Unvented hot water cylinder installation.



Insured and registered oil heating engineer with OFTEC.

Clean, tidy and polite; references are available if required.



For more information please contact
Phillip Hummel

Home Telephone number. 01823 652782
Mobile telephone number. 07456668530
Email philliphummelplumbing@gmail.com

H Tredwin & Son Ltd

Independent Funeral Directors
15 & 17 North Street, Wellington



Providing a proficient, personal and caring
service at **all** times.

Fifth generation independent family business

Private chapels of rest

Pre-paid funeral plans

www.htredwinandson.co.uk

Contact Nick or Louise Tredwin: Telephone: 01823 672287

Mob: 07702 726264

RACHEL GUNDRY

LETTER CARVING IN STONE

Headstones Commemorative

Poetry for the Garden House signs



Sundials Foundation stones

Carving in situ

Restoration/recarving

Design & Illustration

Visit local studio to see stone samples and discuss any enquiry

TEACHING / WORKSHOPS AVAILABLE



rachelgundry@hotmail.co.uk

tel: 01984 624 897

mobile: 07914 822 944 (weekdays)

Wanted



Standing hardwood: Oak, Ash, Beech etc

TOP PRICES PAID

Call Carl Westcott 07973564759



**Household bin
full, give us a call!**



We also supply:

Dumpy bag service – you fill, we collect!

Any amount and any grade of crushed concrete including delivery if required.

2, 4, 6, 8 & 12 cu skips.

20 & 40 cu Roll On Roll Offs.

Grab hire available to collect your awkward waste.

Asbestos disposal available.

Wasteology Ltd is not limited to council schedules, our only schedule is yours!

Anthony James

Dip F.D., MB.L.E., MB.L.F.D.

Funeral Director

A Dedicated Family Business

24 hours, 7 days a week

Caring Personal Service

Private Chapels of Rest

Golden Charter Pre Payment Funeral Plans



Telephone: 01984 624149

Broad Meadow View

West Road

Wiveliscombe

TA4 2TB

Golden Charter
Funeral Plans

www.tauntonfuneralservice.com

tfstauntonwivey@aol.com

Taunton Funeral Service

55 Bridge Street

Taunton

TA1 1TP

Tel: (01823)

321077



ASPECT
PROPERTY
MAINTENANCE

**Mechanical, Electrical, Plumbing,
Heating & General Property Maintenance**

Aspectpropertymaintenance.co.uk

Info@Aspectpropertymaintenance.co.uk

Emergency Call Out 07741439022



GB BUILDING

&

MAINTENANCE

Listed Building Specialist

*Lime Plastering

Internal/External

*Cob Repairs

*Lathe and Plaster

*Stonework

*Cut Roof, Green Oak etc.

Contact Gary Broom

Telephone 01823 283212

or Mobile 07776032289

WIVEY HARDWARE

10 WEST STREET
Tel: 01984 624268

**Tools, Electrical Goods, Paint & DIY,
Kitchenware, Cookware, Seeds, Compost,
Garden Accessories, Camping Equipment,
Wickerware and key cutting service**

Monday – Friday 9 am – 5 pm Saturday 9 am – 3 pm



The social link
for the
countryside

Want to improve your social life?
then join

West Somerset and East Devon

Country Link

An informal group run by the members

*Events include meals out, BBQs, country
walks, music & dancing.*

*For information and a
free programme contact:*

Val ~ 01823 461021 or

Colin ~ 07849 757985

Advertising in the Parish News

- £1.40 per month for a small box
- £3.00 for a quarter page
- £6.00 for a half page
- £12.00 for a whole page.

KEY'S CLEANING SERVICES LTD

Friendly team of reliable and trustworthy staff

FAMILY RUN BUSINESS



- + We clean all windows inside and outside and always include window sills & frames.
- + Skylights / solar panels / conservatories and any type of roof.
- + We offer regular and one off cleans.

JJK GUTTERING SERVICES LTD

- We empty, unblock and clean gutters, fascias, soffits, downpipes, conservatories & roofs.
- We can fix and replace any leaking guttering.



PLEASE CALL FOR A FREE QUOTATION

01823 272260 07885 451628

WWW.KEYSCLEANINGSERVICES.CO.UK

Email: kevsocleaning@btinternet.com



THE COTTAGE BEYOND - SLEEPS 14+2
HOLIDAYS, REUNIONS AND CELEBRATIONS

Accommodation at Kittisford Barton Farm



YONDER VIEW - SLEEPS 2+2
LUXURY CONVERTED SHIPPING CONTAINER



www.thecottagebeyond.co.uk
07843529072



WIVELISCOMBE JOINERY LTD.
Quality Traditional Joinery

Contact Rob Hill
07845 756822

wiveliscombe.joinery@outlook.com



Stunning Village Hall for hire in Waterrow

A superb venue available for parties, weddings, funerals etc. can seat 80 in the hall with additional outside space

Facilities include an excellent fully equipped kitchen, large hall with a stage, meeting room and plenty of outdoor seating potential

Part day from only £30.00, whole day from just £90.00

For booking information or further details, please visit our website at www.waterrow.org.uk
Or ring Liz on - 01984 623431

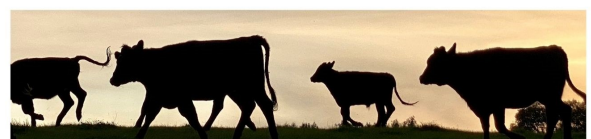


Organic Dexter Beef from Kittisford Barton Farm

£140 - 10kg Beef Box
to include a mix of:

- topside and roasting joints
- fillet, sirloin and rump steaks
- mince, stewing steak, braising steak and brisket

PLEASE GET IN TOUCH FOR ORDERS.
FROZEN BEEF SOMETIMES AVAILABLE.
WAITING LIST FOR FUTURE FRESH BOXES.



To reserve your box please speak to John - 07872 971328
kittisfordbartonfarm@gmail.com

For local cards, prints and paintings

www.anniemusgrove.co.uk

Meadow Farm, Greenham



DAVID PEARCE



**MANUFACTURER & STOCKIST OF
BEE-KEEPING EQUIPMENT**

Hives and Frames

Haddeo, Bathealton, Taunton TA4 2AG

Tel: 01984 623851

**Willowbrook Nursery
and Garden Centre**

Your local family-run Garden Centre

Well stocked garden shop

Café and Tea room Bow Aquatic Centre
Pet and Bird Supplies 'Winesolution' Wine shop
Sheds B & M Camping

Situated on the A38 between Taunton and Wellington

Telephone: 01823 461324 *Open 7 days a week

www.willowbrooknurseryandgardencentre.co.uk

Janet Morris



Freelance Hairdresser

Gents, Ladies and Children

For appointment or consultation please call:

01823 660191 or 07768648244

IN SAFE HANDS



**Home and
Animal Sitting**

ARABELLA STEVENS

Combe St Nicholas, Chard, Somerset TA20 3NG

07926 174 332 • sastevens@uwclub.net



DEVON FENCING

BY SRF TREE SPECIALISTS

ALL TYPES OF AGRICULTURAL
AND DOMESTIC FENCING

Call Sean on:
07774 218349
01823 672765

www.srftreespecialists.com



Fluetopia

CHIMNEY SWEEP

SERVICES

Open Fires/Woodburning Stoves/AGAs
and Rayburns/Rain/Bird guards fitted

Paul Cronin Mob: 07980 743192

**LOGS+TREE
SURGERY**

- dry, seasoned logs
- large or small quantities
- cut & split as required
- tree care, felling & lopping
- plant & trailer hire



Carl Westcott

m: 07973 564759

SharperPrint

**For all your printing needs
at very competitive prices**

*Call Matt on 07906 752190
for a quote*

Defibrillators and The Village Emergency Telephone System (VETS)

ASHBRITTLE & STAWLEY:
01823 244104
BATHEALTON: 01984 322919
**KITTISFORD, TRACEBRIDGE &
APPLEY:** 01823 245101

The VETS numbers are available should you need assistance in an emergency or help to access a defibrillator. Remember, in the event of a possible cardiac arrest in your household: **ALWAYS DIAL 999 FIRST IN AN EMERGENCY AND, IF A CHANCE ARISES, THEN DIAL THE VETS NUMBER, SPECIFYING THAT YOU NEED A DEFIBRILLATOR RATHER THAN GENERAL HELP**

There are four local **defibrillators** which are easy to use and available to anyone. They are permanently located at these places and can be found using the //What3words codes below.

Ashbrittle Village Hall, on outside wall
blurts.flats.crouching

Bathealton Village Hall, on outside wall
relatives.widgets.rolled

Kittisford New House Farm, on wall,
opposite church *bonkers.regime.lyricist*

Stawley Shop, on outside wall
messaging.servers.quaking

These are all accessible 24 hours a day and no access codes are required.

Editorial Policy

Please note that the views expressed in this magazine are the responsibility of the individual author(s) and are not necessarily the views held by the editors of the Parish News.

Local Information

Neighbourhood Watch Contact Numbers

Greenham & Tracebridge	Caro Ayre	01823 672603
Appley	Rachel Chesterton	01823 673063
Ashbrittle	Charles Doble	01823 672365
Stawley	Pat Sweet	01823 672380
Wellisford	William Thomas	01823 673143
Springrove	Doreen Orton	01823 400731

Police non-emergency number 101

Police Beat Team

PCSO Brianna Whelan
Email: brianna.whelan@avonandsomerset.police.uk

Parish Councils

Ashbrittle - Chairman Charles Doble 01823 672365
or 67261 Email: charles@greenandcarter.com

Bathealton - Chairman Philip Broad 07584 657106
Email: philip.broad1@outlook.com

Stawley - Chairman Paul Musgrove 01823 672627
Email: stawleypc@stash.org.uk

Community Halls

Appley Pavilion and Recreation Field
– to book, ring Suzette Williams on 01823 672266
or email: williamspfa@outlook.com

Ashbrittle Village Hall
– to book, ring Pat Gainey on 01823 672760

Bathealton Village Hall
– to book, ring Tilly Willis on 01984 624459

Local Groups

Stawley under Fives at the Appley Pavilion.
Becky Alder Pre-schools Manager
Swallows, Sampford Arundel 01823 672342 Mon/Tues
Stawley Under Fives 07707 416871 Weds/Thurs/Fri

PARISH NEWS DETAILS

The Editors and the next issue deadline date are on the back cover. Please send items for publication to the Editors in good time to ensure publication. There is only a short time between the deadline and the printing of the Parish News and late items may not be included. We are pleased to receive items in any form (typed, in long hand, or by email). Naturally, we prefer items by email ashparishnews@gmail.com when they should be in Microsoft 'Word' format, as this saves a great deal of typing!

Advertising Our rates are £1.40 per month for a small box, £3.00 for a quarter page, £6.00 for a half page and £12.00 for a whole page. Advertising for community events, charity and church fundraising events in our area are normally carried free of charge. Occasional one-off adverts from residents in our area seeking to sell or buy an article or seeking to acquire or offer a service are also carried free of charge. In all cases the style, layout and size allocated to an advert is at the discretion of the Editors.

Editors: Maurice Stanbury 01823 672216 and Avril Silk 01823 672131

e-mail address: ashparishnews@gmail.com

Treasurer: Andrew Millard, Barton Barn, Kittisford, Wellington TA21 0RZ

Bank details: Account Name: The Parish News,

Sort Code: 30-98-45. Acc. no. 01828373 **Distribution:** Pat and David Sweet 01823 672380

Printed by Sharper Print Tel 07906 752190

DATES FOR YOUR DIARY

October

2nd and 16th	10.00 - 12.30 p.m.	Books, Biscuits, Coffee and Cakes at Stawley Mill
5th	7.00 p.m.	'Curry by Candlelight' in Bathealton Village Hall
6th	From 10.00 a.m.	Chipstable Fun Ride - Woodlands Farm, Bathealton
7th and 21st	12 noon - 3.00 p.m.	Pop-up Café - Bathealton Village Hall
19th	10.00 - 12 noon	Coffee, Cake and Chat in Ashbrittle Village Hall
24th	10.00 - 12 noon	Coffee Morning at Church Cottage, Stawley
25th	7.30 p.m.	Traditional Harvest Supper in Ashbrittle Village Hall
26th	9.30 - 12 noon	Local Crafts Market in Wiveliscombe Community Centre
31st	12 noon	Lunch Club in Ashbrittle Village Hall

November

3rd	12.00 p.m.	Harvest Festival Lunch at Stawley Mill
23rd	6.30 p.m.	Film Night in Waterrow Village Hall

December

13th	7.00 p.m.	Kittisford Christmas Dinner at Kittisford House
------	-----------	---



A proud group of prize winners at the Stawley Flower and Produce Show - photo Penny Stanbury

Next Deadline Date: Friday 18th October 2024

Editors: Maurice and Avril