



# Parish news

December 2023

For the Parishes of ASHBRIITLE with GREENHAM, BATHEALTON, STAWLEY and KITTISFORD

## Church Services

<b>Sunday 3<sup>rd</sup> December</b> 9.30am	<b>Advent Sunday</b> Parish Communion	STAWLEY
<b>Sunday 10<sup>th</sup> December</b> 9.30am	<b>First Sunday of Advent</b> Lay led Matins	ASHBRITTE
<b>Sunday 17<sup>th</sup> December</b> 4.30pm -	<b>Carol Service</b> <i>(followed by refreshments in the Village Hall)</i>	BATHEALTON
<b>Sunday 24<sup>th</sup> December</b> 4.00pm	<b>Children's Carol Service</b> <i>Children's Christmas Celebration with Carols and the Christmas story. A short, jolly, candlelit service - everyone welcome.</i>	KITTISFORD
<b>Sunday 24<sup>th</sup> December</b> 10.00pm	<b>Christmas Eve</b> Midnight Mass	BATHEALTON
<b>Monday 25<sup>th</sup> December</b> 10.00 am	<b>Christmas Day</b> Parish Communion	STAWLEY
<b>Sunday 31<sup>st</sup> December</b> 9.30am	<b>First Sunday after Christmas</b> Lay led Matins	GREENHAM
<b>Sunday 7<sup>th</sup> January</b> 9.30am	<b>Epiphany</b> Parish Communion	STAWLEY
<b>Sunday 14<sup>th</sup> January</b> 11.15am	<b>First Sunday after Epiphany</b> Service of Holy Communion taken by <b>Rt Reverend Michael Beasley, Bishop of Bath and Wells</b> <i>Everyone in the community in all of our parishes is very welcome to join us. (Refreshments afterwards at the Old Rectory)</i>	ASHBRITTE
<b>Sunday 28<sup>th</sup> January</b> 4.00pm	<b>Third Sunday after Epiphany</b> .Compline, candles and cake with John Young	KITTISFORD

## Churchwardens and Clergy

### Ashbittle with Greenham

Charles Doble, The Old Rectory, Ashbittle, TA21 0LQ 01823 672365  
David Hanks, Manley House, Ashbittle, TA21 0LE 01823 672436

**Bathealton** Andrew Lyle, Road Hill House, Bathealton, TA4 2AW 01984 629013  
Sarah Eustice, Oakwood, Spring Grove, TA4 1NL 01823 401248

**Kittisford** Annie Musgrove, Meadow Farm, Greenham, TA21 0JW 01823 672627

**Stawley** Penny Hare, Stawley Mill, Wellington, TA21 0HT 01823 672183  
Graham Henson, Court Place Farm, Stawley, TA21 0HP 01823 672496

Please note that during the vacancy and before the appointment of a new priest in charge, any inquiries about services or the occasional offices of the church (weddings, baptisms or funerals) should be made to individual Churchwardens.

## The Parish News

Many thanks to all our contributors and advertisers who have helped create another year of the 'Parish News', and of course, those of you who have so generously donated to the fund.

We have been delighted to carry advertisements and reports for the many events held in our parishes during the year. What a lively and fantastic community we have.

### Local talent

We have also been able to feature some superb paintings and photographs on the front cover of the magazine - a real demonstration of local talent. Keep them coming please!

Also, many thanks also to our willing band of helpers, led by Pat and David Sweet, who distribute the magazine directly and promptly to each and every household each month.

### The distribution team:

**Ashbrittle** Andrew and Liz Burt, Gail Britton, Lena Massie and Pip Wilson.

**Bathealton** Morag Berthon, Fiona McVicar, Nick Bunn, Sara Bloxham, Fiona Holmes, Michael Tarr and Janet Sharland.

**Greenham** Lin Colebrook.

**Kittisford** Penny Stanbury; John and Christine Brinkman.

**Stawley** Pat Sweet, Mike Parkinson and the Village Shop.

**Wiveliscombe** Sue Webber.

A few copies are posted out from the Village Shop to people who have left the area. Martin and Sally Perry continue to deliver copies by hand to those now living in Wellington who still want to keep in touch.

We also send the magazine by email, in a PDF format, to some people outside of our immediate area. If you know of anyone who would like to receive a regular copy in that way, please contact us at [ashparishnews@gmail.com](mailto:ashparishnews@gmail.com)

The magazine is also available on the Stawley website [www.stash.org.uk](http://www.stash.org.uk)

Finally, we would like to say a special thank you to Matt Venn of Sharper Print who has always been most helpful and has provided us with a first class service.

Wishing you a peaceful Christmas and a Happy New Year.

*Avril Silk, Maurice Stanbury and Andrew Millard*



## Quaker Meeting for Worship at Spiceland

**We Meet for Worship at Spiceland  
every Sunday at 10.30am till  
11.30am - this is a blended Meeting  
also available on Zoom -  
All are very welcome.  
Meeting ID: 865 5570 2735  
Passcode: 498173**

John Greenleaf Whittier 1807 - 1892 was a Quaker poet and advocate for the abolition of slavery in the USA. He is probably best known for the words of the hymn 'Dear Lord and Father of Mankind' which were taken from his poem 'The Brewing of Soma.'

Below are two of his Christmas poems.

### Somehow not only for Christmas

Somehow not only for Christmas  
But all the long year through,  
The joy that you give to others  
Is the joy that comes back to you.

And the more you spend in blessing  
The poor and lonely and sad,  
The more of your heart's possessing  
Returns to make you glad.

John Greenleaf Whittier

*Friends at Spiceland Quaker Meeting  
would like to wish everyone a Merry  
Christmas and the hope of a way to peace  
in the coming year. With love!*

"A little smile, a word of cheer,  
A bit of love from someone near,  
A little gift from one held dear,  
Best wishes for the coming year.  
These make a merry Christmas!"

John Greenleaf Whittier

*Front cover - 'Pheasants'  
a painting by Chris Ponsford*



## Wilder Churchyards

A short walk around Kittisford Churchyard on a warm summer evening earlier this year brought back childhood memories of hay meadows alive with dancing butterflies visiting the abundant flowers, hoverflies hanging still in space and red-uniformed soldier beetles tramping across hogweed heads. These were some of the renewed eye-level delights of long ago. Here at Kittisford, mown paths between the graves gave easy walking. The insects are still there – just fewer of them, but big numbers are not so important when females can lay hundreds of eggs at a time. They need the flowers for nectar, and broad leaves for food and layers of fallen grass for hibernation.

When Stawley PCC discussed copying the Kittisford approach, three important doubts were expressed: the neatness of the churchyard was frequently mentioned in our church's visitors' book; families had paid for the burial ground to be kept tidy, so it ought to be; and marker stones of reserved plots might be lost. Reasons in favour of rewilding were based on the nation-wide trend towards promoting biodiversity. Other reasons can be found by searching online for 'churchyard rewilding'.

Stawley PCC decided to continue mowing the larger open areas to give access to graves, but to leave areas close to the headstones to grow on naturally. All long grass would be cut and tidied away before winter, and the policy reviewed annually. Of course, those who tended graves were free to trim their plots.

The PCC also decided to put in place four interpretative plaques explaining what was going on. The texts would be superimposed onto dark parts of a printed photo of the scene as viewed from the plaque.

Here are the texts of the plaques:

### **Plaque 1 This Churchyard appears to be untidy**

'Nature' doesn't recognise tidiness – like gravity, it doesn't 'recognise' anything, and it certainly doesn't have feelings. But nature does send out signals, and tidiness is one of them. Tidiness, like a mown lawn with no weeds, tells us that there are few species of plants there, but even this has its place in overall diversity.

### **Plaque 2 Short grassland on grave-mounds**

Short grassland is an important component of diversity, particularly on grave mounds which have been clipped. Grave mounds usually lie east-west, which means that they have a warmer south side and a cooler north side. This suits at least two species of meadow ant which are important in the life-cycles of some blue butterflies.

### **Plaque 3 Wider spaces of short grassland**

Grasses grow from the bottom of their stems so are not killed by grazing or cutting. Daisies, dandelions and plantains also avoid the mower by having very short stems and forming rosettes.

Earthworms and some other animals live in the soil, and moles burrow after them. Black-birds, thrushes, pied wagtails and starlings collect worms from the surface.

### **Plaque 4 Taller grassland**

Grasses flower and set seed when they are left to grow taller, and other species with more showy flowers survive among them. Butterflies and other insects visit these flowers for nectar and pollen. Mice eat the seeds and foxes, owls and weasels hunt the mice.

By letting patches of grass grow longer, we increase diversity, and this may hold answers to future environmental problems more severe than we can presently imagine.

*Martin Jacoby.*

## Big Breakfast and Car Boot Sale



*A perfect autumn morning for seeking bargains and enjoying a hearty breakfast on the veranda!*

Many thanks to everyone who supported this fundraising event for the Pavilion and Ashbrittle, Stawley and Clayhanger Cricket Club. And many thanks to our superb kitchen team and to the sellers who came along with lots of interesting items.

The morning raised £280, shared 50/50 between the Pavilion and the Cricket Club.

*Sally Scott, Secretary*



**MRS BART'S  
CHRISTMAS FAIR**

(in aid of Bathealton Church)



on

**Saturday 2nd December at 2.30pm**

**BATHEALTON VILLAGE HALL**

**Cakes and Goodies**

**Craft and Gifts**

**Bric-a-Brac**

**Produce**

**Bumper Raffle**

**Teas**

**ASHBRITTLE VILLAGE HALL**



**CHRISTMAS  
BINGO**

**Saturday 9<sup>th</sup> December**

**Doors open 7pm      Eyes down 8pm**

**£1 admission to include refreshments**

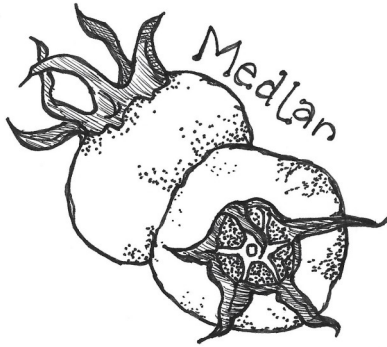
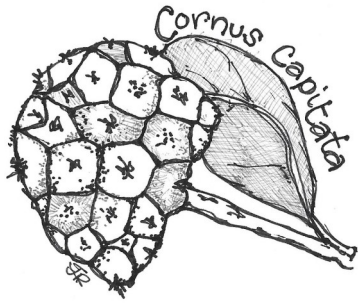


**Next Beat Surgery - Tuesday 23rd January with PCSO Brianna Whelan**

**Stawley Village Shop and Tearoom**

**9.00 - 10.00.a.m.**

## Strange Winter Fruits



When I first worked at Knightshayes, some twenty years ago, there was a semi-evergreen tree in the Walled Kitchen Garden. It was a *Cornus capitata* or 'Himalayan Strawberry tree' known for its large greenish-white bracts followed by the large, fleshy and seed-filled red fruits of almost strawberry sized proportions (*Apparently edible but I can't say I've ever wanted to try one!*) Near it grew a self-sown seedling reaching maturity and many other seedlings of varying ages. It seemed so prolific that we were constantly pulling seedlings out of the paths and vegetable beds. A bit of a pest, truth be told. A lovely one, but still a pest.

I had noticed that there was a rather noisy male Mistle-Thrush (*Turdus viscivorus*) who seemed to be almost permanently ensconced on the chimney of the bothy; he was certainly there from October through the winter till the following spring regardless of the weather. He definitely made his presence known and didn't seem overly bothered by human activity. I realized quite quickly that his daily routine (apart from singing his loud and insistent song) consisted of flying from the chimney to the Cornus, taking a fruit and flying back to the chimney to devour it. And hence the rain of poop-encrusted seeds which then rapidly germinated wherever they fell. As their name suggests, their favoured fruit is that of Mistletoe but they are fond of Holly and Yew berries and will defend their food source vigorously if needed. No wonder he enjoyed the Strawberry-like Cornus fruits; so large, fleshy and juicy!

When I returned to Knightshayes last year I noticed that the original tree had gone; collapsed after a number of stormy winters. They are not terribly long lived in the UK nor reliably hardy. The nearby seedling had grown to a good size to replace it and was fruiting freely and displayed the attractive shaggy, fissured bark of a more mature specimen. But, of the other seedlings of various ages, there was no sign. I also noted that no Mistle-Thrush (or 'Stormcock', the old country name given to the bird) seemed to be in residence. On asking the Rangers, no Mistle-Thrushes had appeared on the property bird surveys for some years. No Stormcock, no seedlings; particularly sad as the remaining semi-mature Cornus had started to drop branches and collapse like its long gone parent. With no naturally occurring seedlings to replace it, I am forced to gather fruit and rot / ferment them in a bucket, sieve out the seeds and sow in very gritty compost though I doubt it will be anywhere as effective and efficient as the digestive tract of our sadly missing largest native thrush species.

*Mespilus germanica*, the Medlar, is a small to medium tree that is nowadays more likely grown for its ornamental value rather than its fruit. The first record of cultivation is with the Greeks and then the Romans, probably originating in South West Asia and the fruit was grown widely across Europe during the Middle-Ages, eaten when 'Bletted' or over-ripened and brown. They can be made into a jelly, curd or fruit 'Cheese' or 'Leather' (a compressed, dried form of the former, which will last a long time in storage). It has high levels of vitamin C and due to its high levels of tannin, it can produce a very clear wine. I have recently made a couple of gallons of Medlar wine using an old hawthorn-berry wine recipe and wait with interest to see the results. Botanically, Hawthorn (*Crataegus* species) are the closest relatives to medlars and in central Europe where the two species have met, a bi-generic hybrid has naturally arisen,  $\times$  *Crataemespilus grandiflora*. It makes a finely domed small tree with slightly smaller flowers and fruit than a true *Mespilus* but retains the lovely lemon-butter autumn colour and graceful habit making it an excellent specimen for a lawn.

Finally, as *Mespilus* is often grafted on to *Crataegus* (Thorn species) rootstock as the plants grow faster than on their own roots, a strange phenomena occasionally occurs; a 'Graft Chimera' (botanically,  $+$  *crataegomespilus*) which sprouts limbs of both *Mespilus* and *Crataegus* foliage, flower and fruit separately, all on one tree!

Strange winter fruit indeed!

John and Julie Ridgley

THE  
**HERITAGE CURE**  
FINE BRITISH CHARCUTERIE



**CHARCUTERIE FESTIVE PLATTERS NOW AVAILABLE**

*We sell a range of cured meats and salamis all produced from rare-breed, free-range pigs on our farm in Stawley.*



Scan here for quick access to  
[www.theheritagecure.co.uk](http://www.theheritagecure.co.uk)  
Hill Farm, Stawley

For enquires, or to arrange local delivery  
please text Dan on 07825402038  
or email [info@theheritagecure.co.uk](mailto:info@theheritagecure.co.uk)

*All products sold before the end of 2023 will have a shelf life of at least  
February 2024 so will last throughout the festive season.*

**15% Discount for local orders  
use code: Stawley2023**





## Bathealton Parish Council meeting Monday 13<sup>th</sup> November 2023

**Present:** Phil Broad, Chair and Treasurer (PB), Steve Cottrell (SC), Jess Bunn (JB), John Ridgley (JR), Karen Tarsey, minutes (KT), Dave Mansell, District Councillor (DM).

**1. Apologies:** none.

**2. Public participation:** none.

**3. Declarations of interest:** none

**4. Minutes:** approved for meeting held on 14<sup>th</sup> September 2023. Matters arising approval of £100.00 to Open Door Charity. Parish walk, PB thanked SC for an enjoyable walk, in glorious sunshine. Thanks also to Hilary Cottrell for providing a lovely afternoon tea

**5. Reports from Somerset District Councillors:** Dave Mansell, Councillor, reported to the committee the current financial situation of Somerset Council. Savings are needed to be made urgently to avoid bankruptcy. For a number of years, the council had made several investments to yield an income, however the current financial situation, including rises in interest rates, will probably result in these investments being sold off, along with cuts in services in order to help balance the council's budget. This may also include the Parish Council losing some elements of its funding.

**6. Planning applications:** none

**7. Financial matters:**

i) Invoices approved: village hall hire, new finger post, burial ground maintenance, minutes.

ii) Current financial position £4234.93, including Community Infrastructure Levy (CIL) element of £2265.02

iii) The committee agreed the CIL element to be spent on village hall kitchen improvements.

**8. Election of Councillors:** The Committee voted for PB to remain as chair, PB accepted. Committee voted for JR to become treasurer, JR accepted (PB to do handover with JR).

**9. Review of Parish Council's budget and/or financial plans for 2023/24 and for successive years. (see 5).**

i) continue support for the defibrillator.

ii) continue graveyard upkeep, unless burial grant 2024/25 is withdrawn. In this eventuality the committee will reconsider how best to support its upkeep.

iii) continue monitoring of public footpath signs and condition of stiles. Continue to replace and maintain fingerpost signs as necessary.

iv) CIL to be used to support village hall kitchen improvements,

v) Where possible, continue to support local charities and community organisations,

**10. 2024/2025 Precept.** The committee discussed at length and agreed that due to the council's current financial situation and the possible loss of income, the precept should be set at £1500.00.

**11. Footpaths:** Rights of way to be upheld. Central government has extended the time limit, to January 2031, to notify them of historical rights of way. JB and JR to meet and compare historical maps and local knowledge with the council's maps of public rights of way in the parish. PB will write to council with any discrepancies found. Residents also encouraged to identify historical paths and inform the council.

**12. Roads:** JB and JR to report two deep pot-holes to the council; one located near Venn Cross, and the other adjacent to the cottages on road hill.

**13. Next Meeting:** Thursday 15<sup>th</sup> February 2024 7.30pm

**14. AOB:** none

Meeting closed at 9.00 p.m.

*Phil Broad, Chairman*

### Ashbrittle Art and Craft Group

Painting and drawing  
Clay work and Textile Crafts

Ashbrittle Village Hall

Next Meetings:  
Wednesdays: 6<sup>th</sup> December 2023, 3<sup>rd</sup> January  
and 7<sup>th</sup> February 2024

1.00 - 4.00 p.m.

We hold a monthly get-together as a self-directed group to do whatever 'arty' or 'crafty' project takes your fancy. Come and meet some local art and craft enthusiasts.

If you are interested in joining us please contact Pauline [pjw200355@gmail.com](mailto:pjw200355@gmail.com)





# CHRISTMAS WREATH-MAKING CLASSES

Saturday 2nd December 1pm-3pm £35  
Sunday 3rd December 10.30am-12.30pm £35

Join craft expert Anna-Lisa De'Ath, AKA  
The Crafty Country Fox, in her stunning  
Stawley studio (TA21) to create your  
very own gorgeous fresh foliage wreath.

To book a place email  
[anna-lisa@thecraftycountryfox.co.uk](mailto:anna-lisa@thecraftycountryfox.co.uk)

What's included:  
All materials for the class,  
plus tea, coffee and  
delicious homemade sweet treats.





## Bathealton Carol Service



Sunday 17th December  
at 4.30 p.m.

**Traditional Nine Lessons and  
Carols Service.**

*Refreshments in the Village Hall afterwards.*

## Not more trees...?

That was one of the responses we got as we started coming up with our plan. Fortunately, we've also had many more welcoming reactions.

But I'm jumping ahead so let me backtrack and introduce myself, Lawrence, and my colleagues – Kiran and Adam. We are three Londoners who have just bought an eleven acre field on the edge of Stawley. It's on one of your beautiful lanes, called Bullock Field Hill in the estate agent's particulars, though few around here seem to have been told that was its name. We have set up a "community interest company", which bought the land in December 2022 from Fern Dunn, part of a family that will be familiar to many in the neighbourhood, who we understand have gradually disposed of their large local estate. We think 'The West Field', as it's known, was her favourite so she kept it until last and we totally understand why - it is a really handsome spot.

Our aim was to avoid buying prime agricultural land - the West Field has been grazed by Rob Williams' sheep for many years. Once upon a time it was part of a larger forest and the land includes a small remnant, recorded as ancient woodland. And the reason we bought it? Yes, to replant the trees and create a small woodland – around 4,500 native English broadleaf trees - to complement the lovely surrounding countryside. We're new to the area (though have friends in Wiveliscombe), but keen to get to know it better, and already we are so glad to have an excuse to come and visit.

Why are we planting trees when there are so many here already? Well, in our view, we all need to be planting trees... to absorb carbon and help combat the crisis of global warming which is so terrifying that many people we know can't bear to think about it for any length of time.

But we don't want to plant a woodland. We want to improve biodiversity and we want to do it in a way that is sensitive to the locality.

As well as restoring the ancient semi-natural woodland, we will be planting shrub and

tree species native to the area that will naturally create habitats for flora and fauna. And we want to source products and services locally as far as possible. Our trees are being supplied by the nursery at Heydon Hill, we stay locally when we visit, and we are enjoying discovering the wonderful and useful shops and businesses in Wellington and Wiveliscombe (as well as the Stawley village shop of course).



*Our planting plan for the West Field which we hope to initiate early in the New Year.*

Woodland creation is a long-term venture and we hope to get to know our neighbours in the parish as we go forward. So, we'd like to encourage you to come say hello, visit the West Field (though please let us know first) and find out more about our project. We're also always happy to have a reason to visit the Globe for a drink or the village shop for tea and cakes!

Longer term we hope to buy more land to plant more woods – so do contact us if you know anyone interested in selling – ideally more than five acres, but under twenty. And if anyone is keen to come out on a glorious February day to join in planting our first batch of trees, please do get in touch.

*Lawrence Simanowitz 07771 761800  
simanowitz@tiscali.co.uk.*

*The West Field, Stawley. What Three Words: ///  
speakers.lawful.corkscrew*



— THE —  
**GLOBE INN**  
APPLEY

A warm festive welcome awaits you at  
The Globe Inn this winter

Sit back, relax and let us take care of the cooking this  
festive season. Treat yourself to our special set Christmas  
menu, available from 1st December - 24th December  
(pre-booking essential).

**2 courses for £22 or 3 courses for £28**

On those cold winter days, cosy up in front of our roaring fires and enjoy our weekly-  
changing selection of seasonal guest ales, along with our delicious home-reared Appley  
pork, Ruby Red Devon beef and locally-sourced meats from Tim Potter.

**Open**

Wednesday to Saturday 12pm-11pm  
Sunday 12pm-4pm  
Food served from 12pm-2pm & 6pm-9pm

**CHRISTMAS OPENING HOURS**

**Christmas Eve** 12pm-4pm (food served 12pm-2pm)

Join us for a festive tippie on **Christmas Day** 12pm-2pm (drinks only)

**Boxing Day Closed**

**Wednesday 27th Dec - Saturday 30th December**  
12pm-11pm (food served 12pm-2pm & 6pm-9pm)

Welcome in 2024 with us on **New Year's Eve** from 12pm til late  
with complimentary nibbles in the evening (food served 12pm-2pm)

**Monday 1st January - Tuesday 16th January Closed**

Open again as usual from **17th January** 12pm-11pm

**Accommodation**

Let us accommodate those extra Christmas guests that you can't fit in,  
at our luxurious one-bedroom cottage, *The Smythy*.

📍 Appley, Stawley, Wellington, Somerset, TA21 0HJ  
☎ 01823 673147  
✉ stuardurston@hotmail.co.uk  
📍 The Globe INN Appley

Amanda, Stuart & Luna  
wish all their customers a  
very Merry Christmas and  
a Happy New Year!



Now taking bookings  
for your  
Christmas celebrations  
and seasonal  
get-togethers!

## Gardening Club

Pat Gainey kindly organised the visit to Otter Nurseries, Ottery St Mary, as it proved such an enjoyable, festive location last year. She reports: “A very good day. The sun actually shone after all the rain so a pleasant journey there. There was plenty of festive spirit throughout the store, even singing penguins! A total of thirteen of us met up for coffee on arrival then shopping followed by lunch in the conservatory where we managed to rearrange their furniture to all sit together, a bit more shopping and home and the sun was still shining not a drop of rain all day.”

### Christmas tea

The annual Christmas Tea at the Old Well Garden Centre is scheduled for mid-December. Members are looking forward to a convivial savouring of cream or cheese teas, together with an opportunity for last minute Christmas shopping! Only a few places left!

The 2024 Gardening Year will kick off with a Bring and Share Supper in a member’s home, towards the end of February. This location provides the perfect backdrop for the excitement of planning the year’s programme of Garden Visits and Member’s Open Gardens.

*Val Wall*

## STAWLEY MILL

**JOIN US FOR  
BOOKS & BISCUITS  
COFFEE & CAKE**



**1ST & 3RD WEDNESDAY OF EVERY MONTH**

**6TH & 20TH DECEMBER  
3RD & 17TH JANUARY  
10AM—12.30PM**

**IN AID OF CHURCH RESTORATION FUND**



## Turkey Gobbledegook

The oven is now open and is belching out its heat. A large tray has been removed and put on the hob. The juices are sizzling and bubbling like a hot steaming sea around potato and parsnip islands.

In the middle of the pan, reclining silently and without any movement is ...

“Well, Mr - or Mrs - can’t tell from this angle – Turkey, you look cheerful and resplendent. Are you as happy as you appear to be? I must say that your coat is very fine. It’s smooth; it’s glistening; shining like the sun. Some of it looks crispy and curly, good enough to eat and savour like a good joke.

“I can see, too, emerging at one end, are the contents you’ve been nurturing: not the usual sage and onion from a packet – that’s good – but there’s sausage, and thyme, and onion, and chestnuts – and do I detect a hint of whisky? Lovely – it hangs there like an old warm chunky scarf around a neck on a cold, cold day.

“And how have you got on with your companions – the roasted parsnips and potatoes? I’m not sure how much I would like to swim in a lake of very hot goose fat, but then I’m not a spud, am I? You look well on it, Turk old boy.

“I look at it this way. You don’t have to cope with all those clinging itchy feathers: they must have been a source of irritation. Also, you are no longer in a large crowd of birds in a cold barn but snug and warm, among folks who love you, who want to get to know you better! Remember – I did all this just for you. I love turkey.

“Have a great day, Mr – or Mrs – Turkey. I have to go – I’m being asked if dinner’s ready!”

Voices are heard from the dining room. They are saying they are starving and want their dinner. “What’s that, dear? Have I taken the nut roast out of the oven yet?”

Happy Christmas.

*Martin Perry*

PS And in among the turkey, the crackers, the silly hats etc, etc, don’t forget the old words:

“O come, let us adore him, Christ the Lord” – the reason for it all!

### Rainfall Statistics (inches) for October 2023

2019	2020	2021	2022	2023
6.86	6.45	6.06	4.88	5.79

*Val Coots*



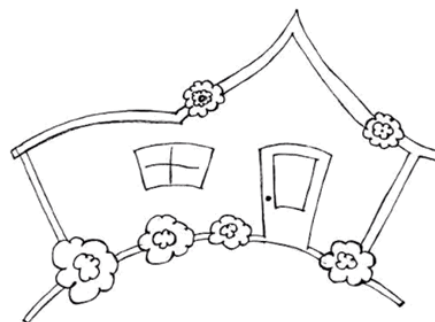
# Stawley Village Shop & Tea Room

## Opening hours

Monday to Friday 8.00am to 5.00pm

Saturday 8.00am to 2.00pm

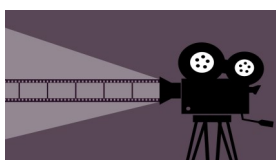
Sunday 9.00am to 11.00am



**The Post Office is here every Thursday 11.30am to 1.30pm**

**Ring us on 01823 674361 or email [shop@stawleyshop.com](mailto:shop@stawleyshop.com)**

---



**HO, HO, HO, HAPPY DECEMBER TO ALL!!**

We hope everyone is beginning to feel fabulous and festive? If not, we have the perfect solution for you... alongside the SCA we are holding a fun afternoon of feasting and film for all the family!

We are showing the Christmas classic, ELF on the big screen at Appley Pavilion on **Saturday 9th December**. Doors open at 3:30pm and the film starts at 4:00pm. £5 per ticket for adults and children over 3yrs, and every ticket includes a box of popcorn!

We will also be serving Bangers, mash, peas and gravy directly after the film to ensure you go home full as well as entertained! Please visit the shop for more info. and to purchase tickets.

We would like to thank all of our customers and volunteers for all of your help and support over the last year. We appreciate each and every one of you in what continues to be a very testing financial climate. Your support is what continues to keep us open and we are truly, truly grateful, Thankyou. Merry Christmas to you all xx

**\*\*PLEASE NOTE OUR NEW OPENING TIMES \*\***

**FROM 1ST JANUARY 2024**

**Monday to Friday 8:30am - 5:00pm**

**Saturday 8:30am - 2:00pm**

**Sunday 9:00am - 11:00am**





## CHRISTMAS MENU

### Starters

Ham Hock rilette, pink peppercorns & toasted French bread

Roast parsnip soup with sage croutons & basil oil

Gravlax & smoked salmon plate, capers & rye crispbread

Baked brie & cranberry tartlette on a bed of rocket salad

### Mains

Turkey Wellington, assorted seasonal roasted vegetables, sausage sage and onion stuffing, bread sauce & turkey cranberry jus

Nut Wellington, assorted seasonal roasted vegetables, sage and onion stuffing, bread sauce & vegetable cranberry gravy

Christmas Beef Bordelaise, celeriac mash, roasted chestnuts, haricots verts & red cabbage

Seasonal white fish, parsley mash, smoked mussels, samphire & sauce vin blanc

### Puddings

Christmas pudding, brandy butter & creme anglaise

Apple strudel & cinnamon ice cream

Trilogy of tartlettes; lemon meringue, traditional mince pie, dark chocolate torte

West Country cheese board consisting of; Vale of Camelot blue, Montgomery smoked cheddar, Cricket St. Thomas brie, Godminster organic vintage cheddar & homemade quince jelly £10

**2 courses - £30**

**3 courses - £35 (not including cheeseboard)**

For bookings call 01984 623344

The White Hart Hotel, The Square, Wiveliscombe TA4 2JP





# **CHRISTMAS PARTY**



**APPLEY PAVILION WITH  
LAS TORDERS  
(LOCAL BAND)**

**FRIDAY 15th DECEMBER  
8PM TILL LATE**

**£15.00  
INCLUDES A WELCOME DRINK  
AND FESTIVE SUPPER**

**Tickets available from  
[williamsdfa@outlook.com](mailto:williamsdfa@outlook.com)**



**LIMITED NUMBER  
BAR**





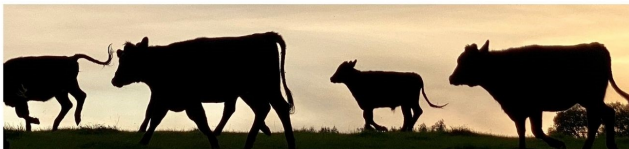


## Organic Dexter Beef from Kittisford Barton Farm

£140 - 10kg Beef Box to include a mix of:

- topside and roasting joints
- fillet, sirloin and rump steaks
- mince, stewing steak, braising steak and brisket

PLEASE GET IN TOUCH FOR ORDERS.  
FROZEN BEEF SOMETIMES AVAILABLE.  
WAITING LIST FOR FUTURE FRESH BOXES.



To reserve your box please speak to John - 07872 971328  
kittisfordbartonfarm@gmail.com

### News from the Parish News

**Donations** received from:  
Tilly Willis  
Jenny Maunder  
David Pearce

Thanks again, for your kind support. Donations may be left at Stawley Shop or sent directly to the Treasurer. Details inside back cover.

*Andrew Millard, Treasurer*

### Village Oil Group

The next oil delivery is due on **Wednesday 13th December**

To place an order, please email: [judy.milne@btopenworld.com](mailto:judy.milne@btopenworld.com) or contact Judy or Michael Milne on 01823 672205 by the Monday before the Wednesday delivery  
New members always welcome



## Bathealton Boundaries Buddies (BBB)

**Why not drop into our monthly 'Pop Up' in Bathealton Village Hall**

**When : First Monday of the month:**  
4th December  
from 12 noon - 3.00 p.m.

No 'Pop Up' in January  
Next one - 5th February 2024

Catch up with old friends and meet new ones.

**Have a light lunch; Home made soup and sandwiches, a selection of cakes with cafetiere coffee or tea: make time to Catch up and Chat**

Cost : £7.00 - a percentage of the profit will help to support the village hall.

### A Rough Ramble for Rossholme



Kitty Hollingsworth from Thorne St Margaret, an active member of the Village Festival Choir and a great supporter of **Rossholme School in Kenya**, together with her nephew Christian Edbrooke, have been presented with The Rossholme Shield after completing a sponsored twenty-six mile walk across Dartmoor to raise money for the school.

The shield, the most coveted of all Rossholme School's awards and trophies, was presented to Kitty and Christian for their tremendous efforts in raising over £1300 for the School.

*Judy Webb*





**Waterrow Village Hall**



## **Quiz Night**

**Friday January the 26th 2024 6.20 pm**

**Waterrow Village Hall, Waterrow - TA4 2AX**

**Quiz Teams - maximum of 6**

The meal is Chilli, jacket potatoes and salad with vegetarian option available. Followed as always by the excellent dessert selections. Meal will be served at 6.30. Please bring your own drinks.

**The Quiz starts at 7.15**

A large graphic for 'Quiz Night' featuring the words 'QUIZ NIGHT' in a bold, white, sans-serif font. The text is set against a background of vibrant, multi-colored brushstrokes in shades of purple, blue, yellow, and red, creating a dynamic and energetic feel.

# **QUIZ NIGHT**

**To reserve your table** please either email Liz using [liz@kilbride.org.uk](mailto:liz@kilbride.org.uk) with your name and team size or you can phone her on 01984 623431

**Priced at only £8.00 for adults £4.00 under 12s**

**We look forward to seeing you there!**

## Stawley Parish Council Meeting 7<sup>th</sup> November.

The Stawley Parish Council met last month to discuss a few matters. The VETs scheme will continue under the auspices of the Parish Councils now that the RCI is no more. We would like to remind you about this valuable insurance policy that we hope may never be used.

Stawley Parish Council maintains the defibrillator outside Stawley Shop and, and has also taken over responsibility for the defibrillator in Kittisford. Both are accessible 24 hours a day without an access code.

In the event of a cardiac arrest always call 999 first but, if possible, use the VETS system to get a neighbour to bring a defibrillator to you.

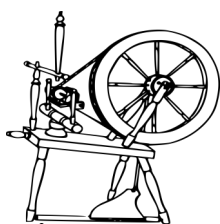
**Please make sure you have the contact phone number for your local VETS system near your phone – these are printed inside the back cover of the Parish News.**

The Stawley Parish Clerk's e-mail address will be changed to [stawleypc@stash.org.uk](mailto:stawleypc@stash.org.uk) to make his life easier and to save the parish a little money in the years to come.

The Parish Councillors now have a *WhatsApp group* so that we can communicate in an emergency. The possibility of a parish wide *WhatsApp group* will be discussed at our next meeting; again for use only in an emergency such as a total loss of power or serious weather induced problems.

The full minutes can be found on the website at <https://stash.org.uk/>

*Paul Musgrove (Clerk)*



### Spinning and Woolcraft Group

Meeting arrangements will be confirmed in advance when the reminder email is sent out.

If you would like to join us please contact me and I will add you to the mailing list. Perhaps you would like to come along and learn to spin with us?

Or bring along your knitting, crochet or other needlecraft project. All welcome.

#### Next Sessions

**Tuesdays:** 5th and 19th December  
Tuesday 16<sup>th</sup> January (no meeting 2<sup>nd</sup> January)  
at 2.30pm

**Contact Pauline: on 01823 672222 or  
email [pjw200355@gmail.com](mailto:pjw200355@gmail.com)**



## Festive Coffee, Cake and Chat



Ashbrittle Village Hall

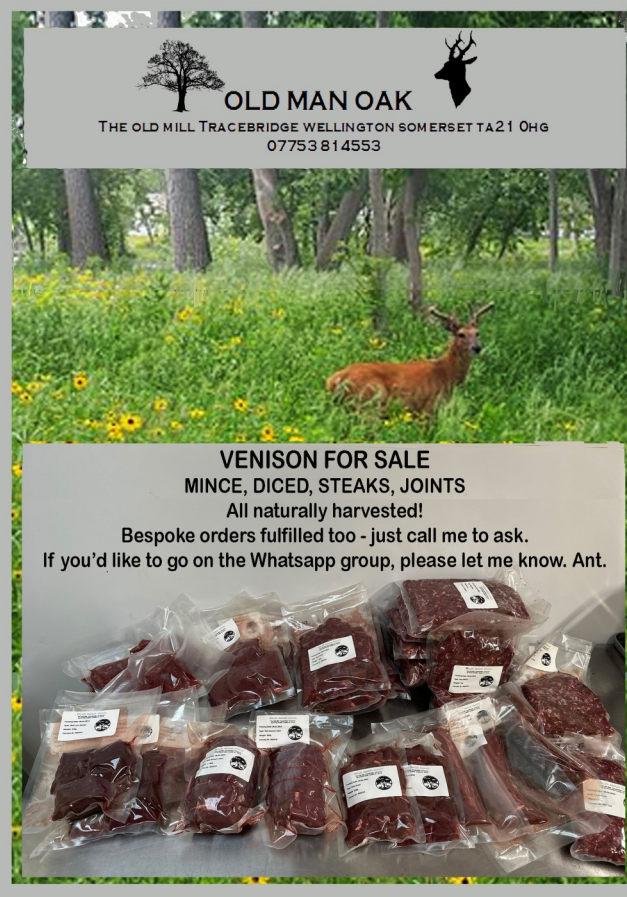
**Saturday 16th December  
and 20th January 2024**

10 -12 noon

**Unlimited Coffee and Delicious Home Baked  
Cakes and festive fare available.**

*Please come and join us - all welcome !*

*No charge but we will be running a raffle*



**OLD MAN OAK**  
THE OLD MILL TRACEBRIDGE WELLINGTON SOMERSET TA21 0HG  
07753814553

**VENISON FOR SALE**  
MINCE, DICED, STEAKS, JOINTS  
All naturally harvested!  
Bespoke orders fulfilled too - just call me to ask.  
If you'd like to go on the Whatsapp group, please let me know. Ant.

### Artists Wanted!

Do you have a painting or photograph which could be used as a cover design for the Parish News? Seasonal and local images are particularly welcome. Please send to Avril at [AvrilSilk@aol.com](mailto:AvrilSilk@aol.com)





# STAWLEY MILL

---

## JOIN US FOR

CHRISTMAS CRAFTS & CREATIONS  
MULLED WINE & MINCE PIES  
BOOKS & BISCUITS  
COFFEE & CAKE

---

**SATURDAY 9TH  
DECEMBER  
12PM — 5PM**

IN AID OF THE CHURCH  
RESTORATION FUND

**STAWLEY MILL  
TA21 0HT**





## Lunch Club

Open to all locals. Please let me know in advance if you would like to come. We generally have a talk or entertainment - I hope mostly both together - followed by a very good lunch provided by Jackie White.

In October our speaker was Ken Atherton, a regular professional local speaker. The subject was 'Longitude' and was very well received. Meticulously researched, with a detailed history of the various efforts to find a way to define any position on the globe, particularly in relation to shipping, when a lack of knowledge of exact location could have disastrous results.

Our Christmas lunch club is on Thursday 14th December. Jackie will provide us with a full scale traditional lunch. The entertainment will be courtesy of Paul Jacques under the banner '*Four saxophones and a clarinet*'.

If you would like to join in please let me know in good time as we are always fully booked. My details are below.

I am reminding you now that our first meeting in the New Year will be on Thursday 25th January 2024. John Dawer will be talking about his personal experience of the world's biggest industrial accident in Bhopal, India.

As a young trainee priest on the spot, he was required to assist the wounded and help in providing essential services. With technical assistance from Gerry Webb, John gave us this talk some years ago, but the impact of the talk was such that I think it is well worth hearing again.

Contacts: email [harlingdelia@gmail.com](mailto:harlingdelia@gmail.com) or telephone 01823 672203.

*Delia Harling*

**ADVANCE NOTICE**  
**January Lunch Club**  
**Ashbrittle Village Hall**  
**Thursday 25th January 12:00**  
John Dawer's personal experience of  
the world's biggest industrial accident in Bhopal, India.

## Mobile Library

at  
Greenham Bridge

**Next visits:** Tuesday 19th December 2023  
and 30th January 2024



## The Bowen Technique

Kate Weeks cert ECBS MFHT MBTPA  
Muscle and Fascia release.

A gentle, intelligent approach to treating a wide range of muscular skeletal and systemic issues, including;

Back pain, neck pain, shoulder problems, headaches/migraines, TMJ problems, bursitis, fasciitis, SPD, pelvic issues and infant colic to name but a few.

Safe for all age groups and during pregnancy.  
Bowen specialist with 20 years experience.

Clinics held at The Terrace, Taunton.  
01823 338968/07721 462096  
[kateweeksbowen@btinternet.com](mailto:kateweeksbowen@btinternet.com)



We are a family run business covering all aspects of interior & exterior cleaning to a very professional standard.

Our cleaning services:-

Carpets & upholstery

Windows, solar panels, conservatories

Pressure washing driveways, patios, paths & decking

Gutter clearing

Gutter fascia & soffits

Roof & treatment scrape & steam

Render

Caravan cleaning

Covering domestic & commercial cleaning

To get your free no obligation quotation call us today via

**07531 220021**

[www.curtscleaningservices.co.uk](http://www.curtscleaningservices.co.uk)

VILLAGE LUNCH CLUB  
ASHBRITTLE VILLAGE HALL

Thursday, December 14th  
Noon start

Traditional Christmas lunch cooked by Jackie White

Entertainment provided by Paul Jacques

“Four saxophones and a clarinet”

Limited seats available

BOOKING ESSENTIAL

Delia Harling 01823 672203

harlingdelia@gmail.com

## DECK THE HALLS



An illustrated talk by Mark Bond, part of the team who create magical Christmas themed decorations at some of Britain's grandest stately homes, with particular focus on Castle Howard (as seen on TV!)

**Saturday 9th December 7.00 p.m.**  
**at Bathealton Village Hall**

*£7 entry inc. warming refreshments*

# Wivey Link

## Going places.....

Wivey Link offers a community run transport service for those of any age with out easy access to a car. We can take people to health and medical appointments as well as social trips, shopping, hairdressers etc.



- Door to door transport service operating from Wiveliscombe
- We cover all surrounding Parishes as well as Taunton and Wellington
- Wheelchair friendly cars
- Fares are very reasonable and bus pass holders get a concessionary rate.

For more information on using Wivey Link, telephone 01984 624666  
Lines open: Mon—Fri 9.30 am to 1 pm Answerphone out of hours



WIVELISCOMBE AREA PARTNERSHIP  
Wiveliscombe House, The Square, Wiveliscombe, Somerset TA4 2JT  
Registered in England and Wales No 4351175 Charity No 1132983  
Supported by Somerset West and Taunton Council and Wiveliscombe Town Council



## Cleaning and Home Help

One off or regular jobs

General cleaning

*My cleaning products or yours*

*End of tenancy cleaning*

*Help with shopping*

*Dog walking*

*And much more*

References  
available  
Call Sarah on  
07772 761677



## Home & Garden Services



# Emma

indianamaish@hotmail.com

01823 672003

*Covid-19: still open for business & following  
Social Distancing Measures*

**Home:** Cleaning, Ironing, having a 'sort out',  
Food Prep

**Garden:** Maintenance, Allotment, Clearance

**Support Work:** Enabling people with  
disabilities

**Handyman Services**





**Mark Westcott**  
Reliable local tradesman

- Rendering • Skimming
- Lime Plastering • Concreting
- Brick, Block & Stone Walling

Mini  
Digger  
service  
available



 07956 062681

 markwestcottplastering@gmail.com

## **Kim White D.O.**

**Registered Osteopath**

**Freathingcott Farm, Holcombe Rogus,  
Wellington TA21 0NG**

**For appointments please contact the practice on:**

**01823 672925**



*Sympathetic repair and restoration of historic buildings*

- \* HISTORIC BUILDING CONSERVATION AND RESTORATION SPECIALISTS
- \* TRADITIONAL LIME RENDERING, POINTING AND INTERIOR PLASTERING
- \* STONE CONSERVATION AND MASONRY REPAIRS
- \* FAÇADE RESTORATION AND PAINT REMOVAL SYSTEMS
- \* ROOFING AND LEADWORK
- \* TIMBER WINDOW REPAIRS
- \* TRADITIONAL CARPENTRY AND BESPOKE JOINERY
- \* KNOWLEDGE AND EXPERIENCE OF WORKING ON ALL FORMS OF LISTED BUILDINGS, INCLUDING ECCLESIASTICAL

[www.thewessexconservationco.co.uk](http://www.thewessexconservationco.co.uk)  
info@thewessexconservationco.co.uk  
George Hannon: 07727 177467  
Will Stevens: 07815 464908  
14 George Street, Wellington, Somerset TA21 8JA



*Our company is accredited by the guild of master Craftsmen, this means we will abide by their code of practice so you can be assured of the highest quality of workmanship at a reasonable price, giving you complete peace of mind at all times.*

## Home Aerials

**Tel: 01984 623232**

**homeaerials@gmail.com**

All Types of Aerials and Satellite  
Digital Upgrade Specialists  
Digital Boxes Supplied and Fitted  
Wiveliscombe & Surrounding Areas  
Local, Reliable, Experienced Engineer

**Contractors for Local Authorities  
and Housing Associations**

**A Family Run Business  
for over 39 years  
Please contact Lulu or Martin Milton**



**Beautiful flowers - grown locally and  
sustainably**

Local gift bouquet delivery and  
flower subscriptions  
(March – November)

Natural Farewell flowers

Weddings and Events

Flower workshops, demonstrations and talks

Contact Jan on 07525948053 or for more  
information or visit:

[www.blueshedflowers.co.uk](http://www.blueshedflowers.co.uk)



# PHILLIP HUMMEL PLUMBING & HEATING

All domestic plumbing work undertaken.  
Oil Boiler service and installation.  
Oil Aga / Rayburn Service.  
Oil tank service and installation.  
Bathroom design and installation.  
Bathroom and Kitchen Tiling.  
Underfloor heating installation.  
Unvented hot water cylinder installation.



Insured and registered oil heating engineer with OFTEC.

Clean, tidy and polite; references are available if required.



For more information please contact  
Phillip Hummel

Home Telephone number. 01823 652782  
Mobile telephone number. 07456668530  
Email [philliphummelplumbing@gmail.com](mailto:philliphummelplumbing@gmail.com)

## H Tredwin & Son Ltd

**Independent Funeral Directors**  
**15 & 17 North Street, Wellington**



Providing a proficient, personal and caring  
service at **all** times.

Fifth generation independent family business

Private chapels of rest

Pre-paid funeral plans

[www.htredwinandson.co.uk](http://www.htredwinandson.co.uk)

Contact Nick or Louise Tredwin: Telephone: 01823 672287

Mob: 07702 726264

## RACHEL GUNDRY

### LETTER CARVING IN STONE

Headstones Commemorative

Poetry for the Garden House signs



Sundials Foundation stones

*Carving in situ*

*Restoration/recarving*

*Design & Illustration*

*Visit local studio to see stone samples and discuss any enquiry*

**TEACHING / WORKSHOPS AVAILABLE**



rachelgundry@hotmail.co.uk

tel: 01984 624 897

mobile: 07914 822 944 (weekdays)

## Wanted



Standing hardwood: Oak, Ash, Beech etc

**TOP PRICES PAID**

***Call Carl Westcott 07973564759***



**Household bin  
full, give us a call!**



We also supply:

Dumpy bag service – you fill, we collect!

Any amount and any grade of crushed concrete including delivery if required.

2, 4, 6, 8 & 12 cu skips.

20 & 40 cu Roll On Roll Offs.

Grab hire available to collect your awkward waste.

Asbestos disposal available.

**Wasteology Ltd is not limited to council schedules, our only schedule is yours!**



# Anthony James

Dip F.D., MB.L.E., MB.L.F.D.

## Funeral Director

A Dedicated Family Business

24 hours, 7 days a week

Caring Personal Service

Private Chapels of Rest

Golden Charter Pre Payment Funeral Plans



Telephone: 01984 624149

Broad Meadow View

West Road

Wiveliscombe

TA4 2TB

**Golden Charter** 

Funeral Plans

[www.tauntonfuneralservice.com](http://www.tauntonfuneralservice.com)

[tfstauntonwivey@aol.com](mailto:tfstauntonwivey@aol.com)

Taunton Funeral Service

55 Bridge Street

Taunton

TA1 1TP

Tel: (01823)

321077



Installation of Fencing, Gates  
and Sheds

Hard Landscaping  
Fencing Repairs

Boundary Fencing  
Decking

**Please contact Chris**

[www.cannonfencing.com](http://www.cannonfencing.com)

[cannonfencing@outlook.com](mailto:cannonfencing@outlook.com)

**07434 640004**

## GB BUILDING

&

## MAINTENANCE

### Listed Building Specialist

\*Lime Plastering

Internal/External

\*Cob Repairs

\*Lathe and Plaster

\*Stonework

\*Cut Roof, Green Oak etc.

**Contact Gary Broom**

Telephone **01823 283212**

or Mobile **07776032289**

# WIVEY HARDWARE

**10 WEST STREET**  
**Tel: 01984 624268**

**Tools, Electrical Goods, Paint & DIY,  
Kitchenware, Cookware, Seeds, Compost,  
Garden Accessories, Camping Equipment,  
Wickerware and key cutting service**

*Monday – Friday 9 am – 5 pm Saturday 9 am – 3 pm*



The social link  
for the  
countryside

Want to improve your social life?  
then join

**West Somerset and East Devon**

**Country Link**

An informal group run by the members

*Events include meals out, BBQs, country  
walks, music & dancing.*

*For information and a  
free programme contact:*

*Val ~ 01823 461021 or*

*Colin ~ 07849 757985*

## Advertising in the Parish News

- £1.40 per month for a small box
- £3.00 for a quarter page
- £6.00 for a half page
- £12.00 for a whole page.

### KEY'S CLEANING SERVICES LTD

Friendly team of reliable and trustworthy staff

#### FAMILY RUN BUSINESS



- + We clean all windows inside and outside and always include window sills & frames.
- + Skylights / solar panels / conservatories and any type of roof.
- + We offer regular and one off cleans.

### JJK GUTTERING SERVICES LTD

- We empty, unblock and clean gutters, fascias, soffits, downpipes, conservatories & roofs.
- We can fix and replace any leaking guttering.



PLEASE CALL FOR A FREE QUOTATION

**01823 272260 07885 451628**

**WWW.KEYSCLEANINGSERVICES.CO.UK**

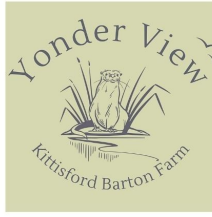
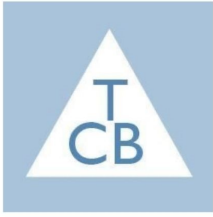
Email: [kevsocleaning@btinternet.com](mailto:kevsocleaning@btinternet.com)





THE COTTAGE BEYOND - SLEEPS 14+2  
HOLIDAYS, REUNIONS AND CELEBRATIONS

## Accommodation at Kittisford Barton Farm



YONDER VIEW - SLEEPS 2+2  
LUXURY CONVERTED SHIPPING CONTAINER



[www.thecottagebeyond.co.uk](http://www.thecottagebeyond.co.uk)  
07843529072



**WIVELISCOMBE JOINERY LTD.**  
Quality Traditional Joinery

**Contact Rob Hill**  
**07845 756822**

**[wiveliscombe.joinery@outlook.com](mailto:wiveliscombe.joinery@outlook.com)**



## Stunning Village Hall for hire in Waterrow

A superb venue available for parties, weddings, funerals etc. can seat 80 in the hall with additional outside space

Facilities include an excellent fully equipped kitchen, large hall with a stage, meeting room and plenty of outdoor seating potential

Part day from only £30.00, whole day from just £90.00

For booking information or further details, please visit our website at



Naturally grown seasonal  
vegetable boxes -  
delivered weekly to your door.

**Alex and Ruth**  
**07854680335 or 01823 672055**

*[steepholding.wordpress.com](http://steepholding.wordpress.com)*

*Holcombe Rogus, TA21 0JY*

For local cards, prints and paintings

[www.anniemusgrove.co.uk](http://www.anniemusgrove.co.uk)

Meadow Farm, Greenham



**DAVID PEARCE**



**MANUFACTURER & STOCKIST OF  
BEE-KEEPING EQUIPMENT**

*Hives and Frames*

Haddeo, Bathealton, Taunton TA4 2AG

Tel: 01984 623851

**Willowbrook Nursery  
and Garden Centre**

Your local family-run Garden Centre

Well stocked garden shop

Café and Tea room      Bow Aquatic Centre  
Pet and Bird Supplies      'Winesolution' Wine shop  
Sheds      B & M Camping

Situated on the A38 between Taunton and Wellington

Telephone: 01823 461324 \*Open 7 days a week

[www.willowbrooknurseryandgardencentre.co.uk](http://www.willowbrooknurseryandgardencentre.co.uk)

**Janet Morris**



**Freelance Hairdresser**

Gents, Ladies and Children

For appointment or consultation please call:

**01823 660191 or 07768648244**

**IN SAFE HANDS**



**Home and  
Animal Sitting**

**ARABELLA STEVENS**

Combe St Nicholas, Chard, Somerset TA20 3NG

**07926 174 332 • [sastevens@uwclub.net](mailto:sastevens@uwclub.net)**



**GREEN & CARTER**

Water Engineers – Established 1774

Manufacturers of water powered hydraulic

RAM pumps

General water engineers Bore holes,

Water filtration and purification

Manufacturers of UV water purifiers

and chlorination plant

Telephone: 01823 672365 (24 hrs)

Fax: 01823 672950      Mobile: 07774 108884.

**PETER COOPER**

**07960 589734**

**CARPENTRY / JOINERY**

**HARDWOOD FLOORING / FURNITURE**

**FENCING / DECKING**



Fluetopia

**CHIMNEY SWEEP**

**SERVICES**

Open Fires/Woodburning Stoves/AGAs  
and Rayburns/Rain/Bird guards fitted

Paul Cronin Mob: 07980 743192

**LOGS+TREE  
SURGERY**

- dry, seasoned logs
- large or small quantities
- cut & split as required
- tree care, felling & lopping
- plant & trailer hire



**Carl Westcott**

m: 07973 564759

**SharperPrint**

**For all your printing needs  
at very competitive prices**

*Call Matt on 07906 752190  
for a quote*

## Defibrillators and The Village Emergency Telephone System (VETS)

### ASHBRITTLE & STAWLEY:

**01823 244104**

**BATHEALTON: 01984 322919**

**KITTISFORD, TRACEBRIDGE &  
APPLEY: 01823 245101**

The VETS numbers are available should you need assistance in an emergency or help to access a defibrillator. Remember, in the event of a possible cardiac arrest in your household: **ALWAYS DIAL 999 FIRST IN AN EMERGENCY AND, IF A CHANCE ARISES, THEN DIAL THE VETS NUMBER, SPECIFYING THAT YOU NEED A DEFIBRILLATOR RATHER THAN GENERAL HELP**

There are four local **defibrillators** which are easy to use and available to anyone. They are permanently located at these places and can be found using the //What3words codes below.

**Ashbrittle Village Hall**, on outside wall  
*blurts.flats.crouching*

**Bathealton Village Hall**, on outside wall  
*relatives.widgets.rolled*

**Kittisford New House Farm**, on wall,  
opposite church *bonkers.regime.lyricist*

**Stawley Shop**, on outside wall  
*messaging.servers.quaking*

These are all accessible 24 hours a day and no access codes are required.

### Editorial Policy

Please note that the views expressed in this magazine are the responsibility of the individual author(s) and are not necessarily the views held by the editors of the Parish News.

## Local Information

### Neighbourhood Watch Contact Numbers

Greenham & Tracebridge	Caro Ayre	01823 672603
Appley	Rachel Chesterton	01823 673063
Ashbrittle	Charles Doble	01823 672365
Stawley	Pat Sweet	01823 672380
Wellisford	William Thomas	01823 673143
Springrove	Doreen Orton	01823 400731

**Police non-emergency number 101**

### Police Beat Team

PCSO Brianna Whelan

Email: [brianna.whelan@avonandsomerset.police.uk](mailto:brianna.whelan@avonandsomerset.police.uk)

### Parish Councils

**Ashbrittle Chairman** Charles Doble 01823 672365 / 672618

Email: [charles@greenandcarter.com](mailto:charles@greenandcarter.com)

**Bathealton Chairman** Philip Broad 07584 657106

Email: [philip.broad1@outlook.com](mailto:philip.broad1@outlook.com)

**Stawley Chairman** Paul Musgrove 01823 672627

Email: [stawleypc@stash.org.uk](mailto:stawleypc@stash.org.uk)

### Community Halls

#### Appley Pavilion and Recreation Field

– to book, ring Suzette Williams on 01823 672266 or  
email: [williamspfa@outlook.com](mailto:williamspfa@outlook.com)

#### Ashbrittle Village Hall

– to book, ring Pat Gainey on 01823 672760

#### Bathealton Village Hall

– to book, ring Tilly Willis on 01984 624459

### Local Groups

#### Stawley under Fives at the Appley Pavilion.

Becky Alder Pre-schools Manager

Swallows, Sampford Arundel 01823 672342 Mon/Tues

Stawley Under Fives 07707 416871 Weds/Thurs/Fri

## PARISH NEWS DETAILS

**The Editors and the next issue deadline date are on the back cover.** Please send items for publication to the Editors in good time to ensure publication. There is only a short time between the deadline and the printing of the Parish News and late items may not be included. We are pleased to receive items in any form (typed, in long hand, or by email). Naturally, we prefer items by email [ashparishnews@gmail.com](mailto:ashparishnews@gmail.com) when they should be in Microsoft 'Word' format, as this saves a great deal of typing!

**Advertising** Our rates are £1.40 per month for a small box, £3.00 for a quarter page, £6.00 for a half page and £12.00 for a whole page. Advertising for community events, charity and church fundraising events in our area are normally carried free of charge. Occasional one-off adverts from residents in our area seeking to sell or buy an article or seeking to acquire or offer a service are also carried free of charge. In all cases the style, layout and size allocated to an advert is at the discretion of the Editors.

**Editors:** Maurice Stanbury 01823 672216 and Avril Silk 01823 672131

e-mail address: [ashparishnews@gmail.com](mailto:ashparishnews@gmail.com)

**Treasurer:** Andrew Millard, Barton Barn, Kittisford, Wellington TA21 0RZ

**Bank details:** Account Name: The Parish News,

Sort Code: 30-98-45. Acc. no. 01828373

**Distribution:** Pat and David Sweet 01823 672380

**Printed** by Sharper Print Tel 07906 52190



## DATES FOR YOUR DIARY

### *December*

1st	7.00 p.m.	Kittisford Christmas Meal at Kittisford House (fully booked)
2nd	2.30 p.m.	Mrs Bart's Christmas Fayre in Bathealton Village Hall
6th and 20th	10.00 - 12.30 p.m.	Books and Biscuits, Coffee and Cakes
9th	12 noon - 5.00 p.m.	Stawley Mill - 'Christmas Crafts and Creations'
9th	7.00 p.m.	'Deck the Halls' an illustrated talk in Bathealton Village Hall
9th	8.00 p.m.	Xmas Bingo in Ashbrittle Village Hall
14th	12 noon	Christmas Lunch Club in Ashbrittle Village Hall
15th	from 8.00 p.m.	Christmas Party with "Las Torders" at Appley Pavilion.
16th	10.00 - 12 noon	Festive Coffee, Cake and Chat I Ashbrittle Village Hall

### *January 2024*

3rd and 17th	10.00 - 12.30 p.m.	Books and Biscuits, Coffee and Cakes
23rd	9.00 - 10.00 a.m.	Beat Surgery in Stawley Village Shop
25th	12 noon	Lunch Club in Ashbrittle Village Hall

### *February*

23rd		Cricket Club Quiz Night at Appley Pavilion
------	--	--

### *June*

1st	2.00 - 5.00 p.m.	Stawley Church Garden Party and Fete at Stawley Mill
-----	------------------	--



## Come and Sing Carols and listen to the Christmas Story

Join us at St Nicholas Kittisford  
for a children's Christmas  
Celebration at  
4 pm on Christmas Eve  
before Father Christmas has  
the busiest night of his year



**Next Deadline Date: Friday 19th January 2024**

**Editors: Maurice and Avril**