

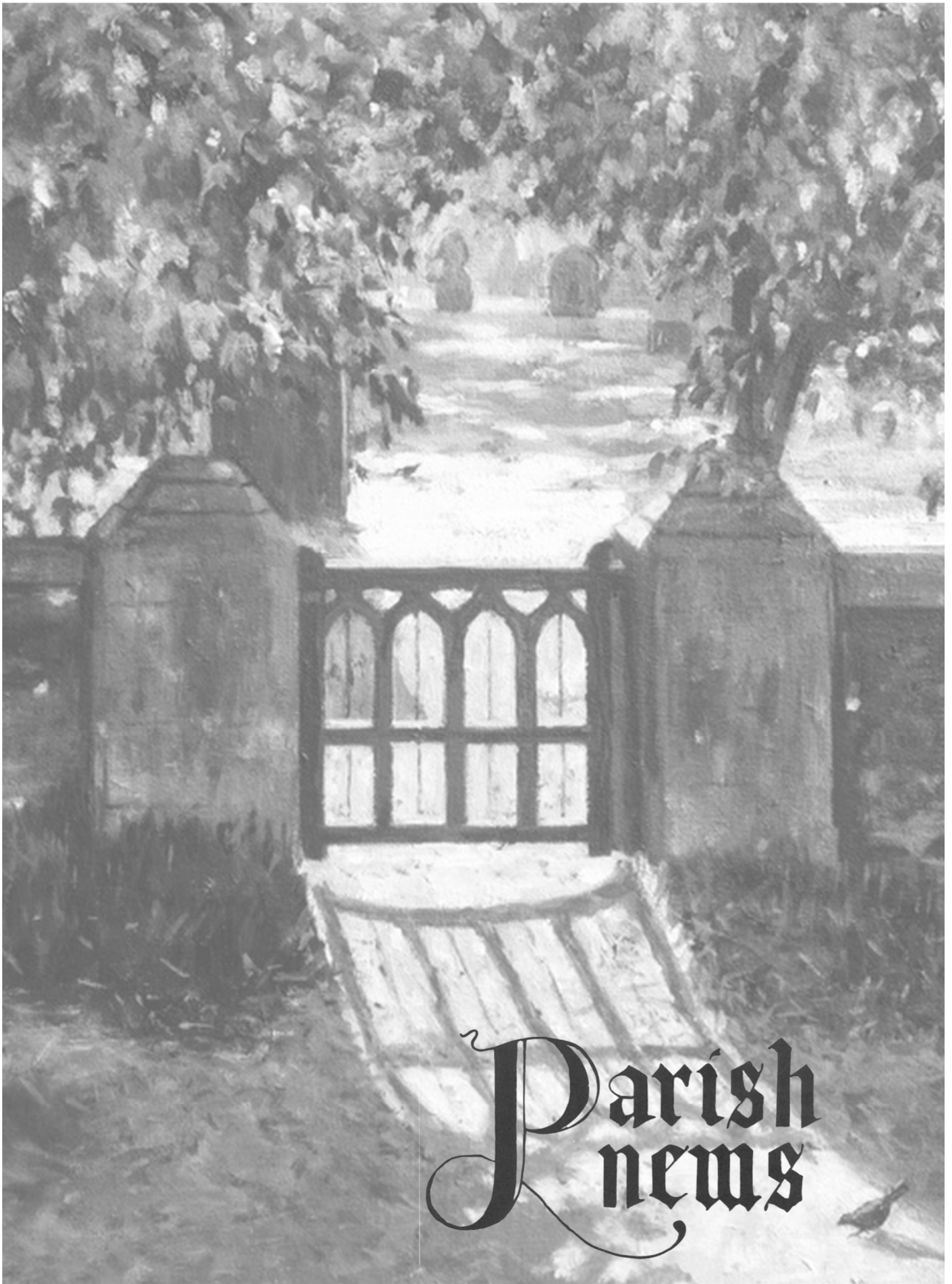
ASHBRITTLE

GREENHAM

STAWLEY

BATHEALTON

KITTISFORD



# Parish news

August 2021

For the Parishes of ASHBRIITLLE with GREENHAM, BATHEALTON, STAWLEY and KITTISFORD

## Church Services

<b>Sunday August 1st</b> 9.30 a.m.	TRINITY 9 Parish Communion	STAWLEY
<b>Sunday August 8th</b> 9.30 a.m.	TRINITY 10 Parish Communion	ASHBRITTLLE
<b>Sunday August 15th</b> 9.30 a.m.	TRINITY 11 Parish Communion	KITTISFORD
<b>Sunday August 22nd</b> 9.30 a.m.	TRINITY 12 Parish Communion	BATHEALTON
<b>Sunday August 29th</b> 9.30 a.m.	TRINITY 13 Parish Communion	GREENHAM

The relaxation in some of the Government's Covid restrictions, means that we can begin to return to a life that approximates a little more to what we used to describe as "normal"! The Church of England has offered advice and guidance as to how we might safely require fewer safety measures of those attending our services.

Worshippers will no longer be required to wear face coverings or to sit socially distanced within our buildings. However, some may wish to do both and we respect their decision. Hand sanitizer continues to be available, but those visiting churches are not required to make use of it.

We will continue to receive communion in one kind and remain in our places to do so.

Hymn singing is now allowed under certain conditions and one of these is the size of the building and the number of worshippers. The Churchwardens and I consider that next month (September) will be a good time to re-commence hymn singing. This may be limited, in the first instance, to one or two hymns but in six weeks time, we will have a better idea as to the progress of the virus.

Thank you, in advance for your understanding and patience in this matter. We look forward to you joining us for our Eucharists.

*Martin Beaumont*

## Churchwardens and Clergy

### Ashbrittle with Greenham

Charles Doble, The Old Rectory, Ashbrittle, TA21 0LQ	01823 672365
David Hanks, Manley House, Ashbrittle, TA21 0LE	01823 672436

<b>Bathealton</b> Andrew Lyle, Road Hill House, Bathealton, TA4 2AW	01984 629013
Sarah Eustice, Oakwood, Spring Grove, TA4 1NL	01823 401248

<b>Kittisford</b> Annie Musgrove, Meadow Farm, Greenham, TA21 0JW	01823 672627
---	--------------

<b>Stawley</b> Penny Hare, Stawley Mill, Wellington, TA21 0HT	01823 672183
Graham Henson, Court Place Farm, Stawley, TA21 0HP	01823 672496

<b>Associate Priest</b> Revd Martin Beaumont, Hilltop, Milverton TA4 1JR	01823 400127
--	--------------

<b>Missioner and Team Vicar</b> Revd Selina Garner, Email: <a href="mailto:selina@thegarner.me.uk">selina@thegarner.me.uk</a>	01823 662227
---	--------------

## Thought for the Month

*To see thee is the end and the beginning.  
Thou carriest me and thou goest before.  
Thou art the journey and the journey's end.*

Boethius; trans Helen Waddell

Over the course of the last eighteen months, it has seemed that we have been on a journey,

The most unexpected events have occurred and our way of life, certainly in the first three months of the pandemic, has been transformed. Social distancing, face coverings, hand sanitising and restrictions on social gatherings have all become commonplace and accepted.

Due to a widespread vaccination programme, many of us now have some protection against the virus but caution remains a priority.

The Wellington and District Team Ministry, of which The Ashbrittle Group of parishes is a part, has also been on a journey. Some of our old friends have died whilst others have moved away. Two of the clergy (by far the least important part of any parish!), Maria Hearl and Tim Treanor have retired and we shall miss their support, encouragement and dedication to the Gospel.

Maria's responsibilities have been re-distributed amongst the remaining clergy but we have now entered a period of vacancy with regard to the post of Team Rector.

The Archdeacon of Taunton has contacted all the Churchwardens of the thirteen parishes and intimated that there may be a period of some eighteen months before a new appointment is made. This will provide him and us with the time and opportunity to discuss the way forward. Do we think that the current arrangement in our team works well or might we want to consider changes to its configuration or the pastoral care that it provides.

In the meantime, the Archdeacon has offered us the assistance of a retired and experienced priest, currently living in Taunton, who is willing to assist us on an interim basis.

This priest will be working as Acting Team Rector and available on Sundays and two days of the working week. Before he can begin, our PCC's will need to give their formal approval to the arrangement.

We very much hope that he will be able to remain with us until a new, permanent, Team Rector is appointed or decisions are made regarding the Team as a whole.

As if this were not enough, we are also beginning a consultation process regarding the appointment of a new Bishop of Bath and Wells, following the retirement of Peter Hancock.

The churchwardens have been invited to express their views on the qualities required of a new Diocesan Bishop. Do please contact them if you wish to share with them your own thoughts on this matter..

Our journey continues.

Whether it be our own personal cares and concerns, the issues that we ponder together as a community, or the life of our church and indeed our nation, our direction of travel is always uncertain.

It seems unlikely that we can even conceive what might might be considered a destination!

However, the Christian faith offers us a vision of a God who knows our beginnings and our ends and as Boethius reminds us, He carries us forward on our own particular journey.

And if we accept God's invitation, our search for Him and His search for each of us, can be a journey in itself.

With my best wishes,

*Martin Beaumont*

### Rainfall Figures for June (inches)

2017	2018	2019	2020	2021
2.53	0.66	4.90	4.66	2.60

*Val Coots*

### The Front Cover

This month the cover of the Parish News is a picture of the church gate in Bathealton by Tilly Willis.

Tilly and her father, Richard, will be exhibiting next month as part of the 10 Parishes Festival, and Somerset Art Weeks (SAW). The details are on page 9.

There will be is also an exhibition at Stawley Mill, see page 17.

The 10 Parishes Festival and Somerset Art Weeks booklets containing the details of all the venues will be available shortly from Stawley Village Shop.

*Eds*

## The Shop at Work

Once upon a time, over sixteen years ago in the village of Greenham, there was a Post Office and village store. It was in a semi-detached cottage where Bill and Peggy Wotton lived and whom many remember with fondness. When they were ready to retire the RCI was asked to look for ways to keep the Post Office open. Peggy stoically carried on working while various ideas were explored.

In time, a new committee was formed, the Stawley Community Association (SCA). A council-owned building was found beside Stawley Primary School, acquired and, with huge support from the community, the councils, the lottery and many generous gifts and loans from local people, it was adapted. The new village shop was born.

It got off to a flying start under its first tenants, Sheri and James Corry. After they finished, several other people took on the job until 2016 when it was thought that the shop might have to close. Sally and I were approached to consider taking it on. We decided to have a go and were signed up. We were able to put some money into the business as well as buying what stock there was. Being rookies at running a business, we decided we should put down certain principles:

- a) We were not in it to make a profit or earn a living for ourselves.
- b) We would seek to serve the community, which would be reflected in our prices which would cover expenses.
- c) We would run it as a community shop, not seeking to compete with the shops in the town.
- d) We would want people to come and have a pleasing, social experience, with a caring pastoral element to what we do.
- e) We would have an emphasis on local, naturally grown and fair-trade organic products.

We have made the shop profitable but as a consequence of these aims, not as the purpose of them. After 15 months or so, our turnover was such that we crossed the threshold into having to register for VAT.

**Early Days:** The opening changes involved brightening up the place. We moved the chiller and shelving which covered the windows, blocking out the light. New built-in shelves replaced the old metal ones. The community room was moved from the rather small, cold, back room to the front and became the current tea room, sometimes used for meetings and events. An increasing, excellent full menu was produced, and people came for filled baps, sandwiches, cakes, as well as meals, especially the monthly lunch for

ladies and breakfast for men. The variety and quality were popular and a good reputation was built up.

We have continued to welcome the outreach Post Office, once a week for two hours, an amenity which it is hoped will continue for the benefit of customers.

All this also proved demanding as we were working every day, 364 days a year. This was partly due to selling and delivering newspapers and milk. On the full working day, we would arrive at 6.30 am and leave after 6.00 pm.. This took its toll on our overall lives and energy, so something had to change.

**Changes:** Via discussions with the SCA, it was decided to reduce the opening hours slightly and to seek volunteers to help. We began to come to the shop an hour later for an opening time at 8.00 am with shorter opening hours on Sundays. People came forward to be volunteers and have proved an excellent addition to the team. Each one received training in all aspects of the shop, including a new till and cloud-based EPOS system. Some helpers were willing to work a morning, so we have been able to have an occasional day off during the week.

We now have a rota of people who deliver papers Monday to Saturday, as well as those who collect papers for their village. All these are essential to the life of the shop as well as increasing the well-being of the tenants.

**Pandemic:** Then along came the pandemic. Some of our older helpers were unable to continue during the crisis, but there were enough to enable us to have afternoons covered. Our approach and our principles were put into sharper focus when we delivered goods to people who were unable to go out due to Covid. We have always felt that, if there were people in the area who were housebound, we would do what we could to see that their needs were met. Similarly, if someone asked if the shop could help them in some way to raise money for a cause, we have been pleased to do that.

Consequently, the shop has a reputation for being a community hub, with its concern for people, and for offering good products at fair prices. It exists for the community and people know that. It is the role of the tenants, shared with the volunteers, to enable this to happen, and to maintain the shop's presence as such.

**Summary:** However, it has been very demanding. That can and does have a negative effect on a tenant's life and relationships. That's why any tenant must have a clear vision and set of principles at the outset, as we did at the beginning, and stick to them. They are to be servants of the community but not slaves to every



demand, want or fancy, which leads to compromise of one's aims. That, in turn, leads to unnecessary pressure with increased calls on time and energy. There must be boundaries and both tenant and volunteers, who share the load, must be strong enough to say no where appropriate. Though this may sound negative, it is vital for keeping the team strong so that the staff and shop can keep going.

To that end, we have found the SCA to be a very supportive group, coming up with ideas to help us, providing finance for buying new equipment,

and working with us to make the load easier to carry.

The overall experience of operating our Stawley Village Shop and Tea Room has been satisfying and pleasurable. There is a great deal of variety and interest each day. The variety lies in the people who come in, each one being different. Care for them, respect them all equally and in a friendly way, and the tenants, in harmony with the volunteers, will find it none other than a task well done, with many moments of fun and even joy!

*Martin Perry*

## STAWLEY COMMUNITY ASSOCIATION (SCA)

### **THE FUTURE OF STAWLEY SHOP AND TEAROOM**

#### **Due to the impending retirement of Sally and Martin**

#### **We need to find a way to secure the future of our valuable community asset**

New tenant(s)?

Manager with Volunteers?

Volunteer Co-operative?

Whatever the solution:

#### **WE REQUIRE HELP FROM YOU IN OUR COMMUNITY**

- \* People with legal or business skills to assist with the process of securing the future of the Shop
- \* People with ideas and willingness to help generally with the process of securing the Shop's future
- \* More volunteers to work in the Shop, now and in the future
- \* More committee members

#### **Would you like to be the new tenant?**

#### **Secure the future of the valuable resource that is Stawley Village Shop and Tearoom**

#### **Come forward and offer whatever time, ideas and resources you have**

Please give this serious consideration and if you have *any* interest in working with us to keep our shop open please contact

Pauline or Cilla, Sally and Martin, or the present Shop volunteers

Pauline Wood

01823 672222

pjw200355@gmail.com

Cilla Newsom

01823 673303

cillanewsom@gmail.com

Sally and Martin in the Shop

01823 674361

shop@stawleyshop.com

## Country matters

### *The Evening Comes*

*The evening comes, the fields are still,  
The tinkle of the thirsty rill  
Unheard all day, ascends again.  
Deserted is the half mown plain,  
Silent the swaths! The ringing wain,  
The mower's cry, the dog's alarms,  
All housed within the sleeping farms!  
The business of the day is done,  
The last-left haymaker is gone.*

...

*And on the pure horizon far,  
See, pulsing with the first-born star  
The liquid sky above the hill!  
The evening comes, the fields are still.*

Matthew Arnold (1822 - 85)

**Late June** One of the summers' insects are lacewings. These are acid green insects with a body of 1 - 2 cms and large, transparent, intricately veined wings. There are about 43 species in England and they are a gardener's friend. They eat vast amounts of aphids by injecting them with digestive fluids and sucking them up.

The foxgloves have been spectacular this year and are mainly pollinated by bumblebees. The flowers nearer the base are female and the ones at the top male. The bees start at the bottom and work their way up, one bell shaped cup at a time. Thus the bumblebees arrive at female flowers with pollen fresh from the male flowers of a different plant.

**Early July:** The cold April and cold, wet May made the tadpoles in my pond late in developing, but quite a few little froglets are now hopping about. The two, very large toads I have seen have been very light coloured, almost yellow. Their colour does vary considerably but these were the lightest I have ever seen. Toads eat everything, from slugs to spiders; very large ones have been known to eat harvest mice! They are eaten, in turn by herons, otters, hedgehogs, magpies and others.

Near Ashbrittle a grass snake was seen sunning itself on a quiet lane, it was over a metre long. It was probably a female and slipped away into the bank. Grass snakes generally eat amphibians, but will take small mammals and fish. These they find when swimming in the canal. They are not poisonous. Our only poisonous snake is an adder; they are only about 60cms long and vary in colour from light brown to nearly black, with a dark V

along their heads. There are no adders in Scotland or Ireland. The young are born fully formed from August to September.

The benefits of the later cutting of the road verges this year have included the amount of wild flowers. Meadowsweet is foaming along the banks with its fragrant, frothy spires the rich colour of clotted cream. It is the larval host plant for over 75 types of insects such as moths and leaf beetles, with large amounts of nectar. It can be used to flavour mead and gooseberry jam. Although meadowsweet is very fragrant, honeysuckle is more powerful and it is thought that moths can smell it up to a quarter of a mile away.

Look out for butterflies, especially tortoiseshells and red admirals.

Sally Merrett



**Quaker Meeting for Worship  
Spiceland Quaker Meeting  
Uffculme EX15 3AZ**



***Spiceland is open for Heritage Day  
on Sunday 12th September, 2 - 5pm***

**Burial Grounds and Meeting House open to  
the public**

**You are welcome to bring your own  
refreshments to enjoy in the peaceful sur-  
roundings of the grounds**

***<http://www.spicelanduffculmequakers.com>***

**COME AND SEE US - ONLY 1.5 MILES  
FROM UFFCULME AND SIGNPOSTED  
FROM THE A38**

For more information phone Ali Dominy  
07810768557 or use the "contact us" form on our  
website: <http://www.spicelanduffculmequakers.com/>  
There are also instructions on the website of  
how to find us.

# KIDS COLUMN

## *Dogs and Puppies*

Hello everyone, I love dogs. We have recently adopted a cute little puppy  
(like lots of other people in lockdown)  
so I thought I would make this month's column about dogs and puppies.

## FUN FACTS

A dog's sense of smell is 100,000 times better than ours. They can even be trained to sniff out cancer and other diseases.

The smallest dog breed is a miniature or teacup Chihuahua weighing just 2.2 kilos.

The largest and heaviest dog is the English Mastiff which can weigh up to 100 kilos.

There are around 200 different dog breeds.

### **Three of the best things to do with your dog this summer**

Go paddle boarding with your dog. We tried this with our pup, and she was surprisingly good!

Go camping with your canine friend. Many campsites are dog friendly.

Take your fur ball river swimming – its great fun and no one needs to worry about getting chlorine in their eyes.

**Adanna Ranson**

## Lunch Club

Lunch Club in Ashbrittle Village Hall. We are coming back!

After an absence of eighteen months we hope to return on **Thursday 30th September**. The hall will be ready and our cook, Jackie White, will be ready.

There will be some changes in the way we organise the club, but as ever we are staying with the same format. We will meet on the last Thursday in the month (except for Christmas), starting at 12.00 noon and finishing by 2.00pm. There will be a speaker, opportunities for questions and discussion or some other activity (not too active!), followed by a two course lunch.

Nearer the time I will contact all the regulars individually, but we welcome new members and, if you are local, we would be delighted to hear from you. Contact details below.

In the past Liz Taylor has taken on all the responsibilities, but we are now hoping to share out most of the organisational jobs. This can be anything from moving tables and chairs to liaising with the RCI and Active Living. Please let me know if you would like to help in any capacity.

Call me on 01823 672203 or email me at: [deliaharling123@tiscali.co.uk](mailto:deliaharling123@tiscali.co.uk)

*Delia Harling*

### Donations for the Parish News

Donations received from Stawley Shop and Jenny and Robert Boutwood  
Clive and Val Wall  
The Willis family  
Janet Morris

Thanks again, for your kind support.

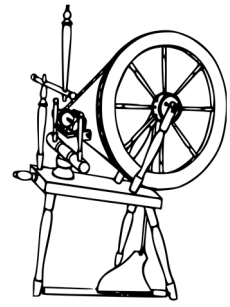
Donations may be left at Stawley Shop or sent directly to the treasurer:  
details on page 31

*Andrew Millard, treasurer*

### Mobile Library

Greenham Bridge  
From 10.00 to 10.20  
3rd and 31st August

## Spinning and Woolcraft Group



The Spinning and Woolcraft Group will continue to meet on a fortnightly basis (first and third Tuesdays in the month) for the near future.

With the easing of COVID restrictions, we will alternate Zoom sessions with meetings outside in a member's garden, weather permitting.

Meeting arrangements will be confirmed when the reminder email is sent out.

If you would like to join us please contact me and I will add you to the mailing list. Perhaps you would like to come along to a garden meeting and learn to spin with us?

### Next Sessions

Tuesday 3<sup>rd</sup> August on Zoom  
Tuesday 17<sup>th</sup> August Garden Meeting  
at 2.30pm

Contact Pauline: on 01823 672222,  
email [pjw200355@gmail.com](mailto:pjw200355@gmail.com)

## Ashbrittle Art Group

# REVIVAL!

We are now meeting on Wednesday afternoons, socially distanced in Ashbrittle Churchyard at 2pm

### Everyone welcome

Contact Liz on 01823 673000  
for more information

# 10 Parishes Festival and SAW Open Studio Exhibition

**Sat 11th Sept - Sun 3rd Oct 11am-5pm, (closed Mondays)**

**Tilly Willis**

Portraits, still life, landscapes, African paintings, prints and cards.  
Commissions taken.

**Richard Willis**

Seascapes, landscapes and prints.

At Bicknell's, Bathealton, next to the village hall

Tel.01984 624459 [tillywillis@hotmail.co.uk](mailto:tillywillis@hotmail.co.uk) [www.tillywillis.com](http://www.tillywillis.com)



## Gardening Club

### Stawley Flower and Produce Show

The Stawley Flower and Produce Show will be held at the Pavilion on Sunday 5th September and we are very much looking forward to receiving lots of entries.

Please see entry forms and details in the programme, in this edition of the Parish News. More copies are available at the Village Shop.

#### ***There are a few changes this year:***

Entries may be sent by email to [suejacoby@gmail.com](mailto:suejacoby@gmail.com) marked 'Flower Show Entry' and fees for these can be paid on the staging day.

Alternatively, entries can be left, as in previous years, with the entry fees, at the Village Shop. **Entries on the day will be £1 each**, as we are just so busy getting everything ready. So please try and get your entries to us on time.

A reminder to those who won prizes in 2019 to return their trophies suitably polished and engraved where necessary. These can either be dropped into Church Cottage, Stawley, left at the Village Shop or brought on the day.

Here's hoping for a fine day!

### Other News

We still aren't sure when the next trips will be, but we will keep you all informed.

We have had a few beautiful photographs of flowers from members' gardens, so please continue to share your creations with us when you can.

If you have any suggestions and new ideas, or any other inquiries, please contact Pauline on 01823 672222, email [stawley.gardening.club@gmail.com](mailto:stawley.gardening.club@gmail.com), or Sue on 01823 674471.

And remember, new members are always welcome.

*Pauline Wood and Sue Jacoby*

### Stawley Thoughts

A new and complete edition of 171 pages, limited to 50 copies and including all essays by Martin Jacoby published in *Parish News* 2016-2021 by kind permission of the Editors.

***For sale in The Stawley Village Shop  
at the cost price of £9.50***

## Eco-Bricks

For the last couple of years some of you have joined us in collecting non-recyclable plastic film in two-litre drink bottles which, when packed tight become Eco-Bricks. When the scheme was launched the idea was that these could be taken to local collection points and then forwarded to organisations, usually in poorer countries, that could use them to construct anything from shower enclosures to garden seats.



Before the first lockdown we delivered Eco-Bricks to a collection point near Exeter. Since then we have been stocking them until restrictions eased. However, in meantime, the organisers of the scheme have changed their policy and decided that it is not politically correct to pass our waste on to others, and we should find some way of using it ourselves. Consequently, none of the previous collection points in our area will accept more deliveries of Eco-Bricks and we have around 150 of them piled up in a shed.


Our grandson had fun lining them all up for a photo, but wasn't so keen on having to put them all back in the shed afterwards.





As the contents of each Eco-Brick are not recyclable, although the outer bottle is, Somerset Waste are not interested and will only accept them for landfill, so unless anyone can find a use for some or all of them, they will shortly be making use of a one-way ticket to Poole.


*John and Liz Field, 01823 673236.*

— THE —  
**GLOBE**  
**INN**  
APPLEY

 Appley, Stawley, Wellington,  
Somerset, TA21 0HJ

 01823 673147

 [stuardurston@hotmail.co.uk](mailto:stuardurston@hotmail.co.uk)

 [theglobeinnappley.co.uk](http://theglobeinnappley.co.uk)

## Open

**Wednesday to Saturday 11 till 11**  
**Sunday 12 till 4**

**Food served from 12 till 2 and 6 till 9**

**Pizza evening every Friday 6 till 9**  
**(booking recommended)**

**Stuart and Amanda welcome you to  
enjoy the gardens.**

**Nothing better than a cool pint on a hot day.**



## Nothing Like a Bit of Jingoistic Frog Bashing!

When the editor asked whether I had enjoyed Henry V at Cothay, I replied yes, enormously, and that there was nothing like a bit of jingoistic Frog bashing. She said that would be a good title for a review, and asked me to write one, so here goes:

### Henry V at Cothay Manor

A few years ago I was lucky enough to have tickets to an England vs France rugby match. As I travelled by train from central London, the carriage was filled with friendly banter between *les bleus* and *les rosbifs*. Voices rose as we clattered closer to Twickenham, when a piercing English voice rang out in an exhortation to both sets of spectators: 'remember Agincourt'!

The fact that we do remember the Battle of Agincourt (1415) is in no small part due to Shakespeare and one of his famous histories, Henry V. The final part of a tetralogy, it was preceded by Richard II and Henry IV parts 1 and 2, the latter two of which introduced the young Prince Hal (Henry) as a wild and dissolute young man (a misrepresentation – but never let the truth get in the way of a good story!). This play tells how the eponymous newly crowned king rises to the military and diplomatic challenges of a medieval monarch and, leaving his past behind, displays the maturity and leadership to not only win battles, but to strive for peace through marriage.

There can be few more atmospheric or appropriate settings for a Shakespeare play, nor any more lovely, than the gardens and grounds of Cothay Manor. Following an eighteen month dearth of local arts events due to Covid, the weather was kind on Saturday 26th June, and the audience gathered on the lawn, some picnicking beforehand, some walking around the gardens, on a beautiful early summer evening. The Chorus (in the shape of the Director) called the audience's attention, set the scene and the play began. Due to Covid restrictions there was no interval, and the play had been shortened to last ninety minutes. This had been done with great skill, retaining the narrative, balance and key components of the play, whilst also providing it with more drive than normal. The all-male cast of seven actors multi-tasked admirably, playing a total of seventeen parts, including the French King's daughter, Catherine, and her maid. There are so many memorable moments in this play: the contemptuous insult of the French Dauphin, presenting the newly crowned Henry with tennis balls; the rallying cry in the assault on Harfleur

('Once more unto the breach, dear friends, once more; Or close the wall up with our English dead!'); the humorous lesson in how to speak (Fr)English given to Catherine by her maid; the sleepless nerves on the eve of battle; the rallying speech by Henry before the overwhelming victory at Agincourt ('We few, we happy few, we band of brothers....And gentleman in England now a-bed Shall think themselves accurs'd they were not here, and hold their manhoods cheap whiles any speaks that fought with us upon Saint Crispin's day.');

and the eventual wooing of Catherine by Henry, suggesting a prospect of peaceful relationships between England and France, to be cemented by their marriage.

The truth was rather different. Henry's conquests in France continued for five years after Agincourt, capturing Normandy and laying siege to Paris, at which stage he was acknowledged as the heir and Regent of France and married Catherine, both in 1420. But his untimely death from a combination of dysentery and heatstroke in 1422 meant that peace was elusive – but that is another story.

Henry V has surprisingly contemporary themes, touching subjects such as the nature of leadership, the relationship between England and France (and by extension Europe), and the relationship between England, Wales, Scotland and Ireland. My thanks to the Festival Players for once again bringing Shakespeare so entertainingly to our doorstep. And thanks too to Roy and Victoria Sebag, the new owners of Cothay Manor, for allowing us to share the experience in such splendid and apposite surroundings, and to wander the gardens. I do hope that this fixture in the local arts calendar will continue for years to come, and encourage any who may be unsure about Shakespeare to give him a go.

*Jeremy Robbins*

### Village Oil Group

To place your order please email  
[judy.milne@btopenworld.com](mailto:judy.milne@btopenworld.com) or contact  
Judy or Michael Milne on 01823 672205.

Orders by the Sunday evening, before the next  
delivery day please, which will be

Wednesday 11th August

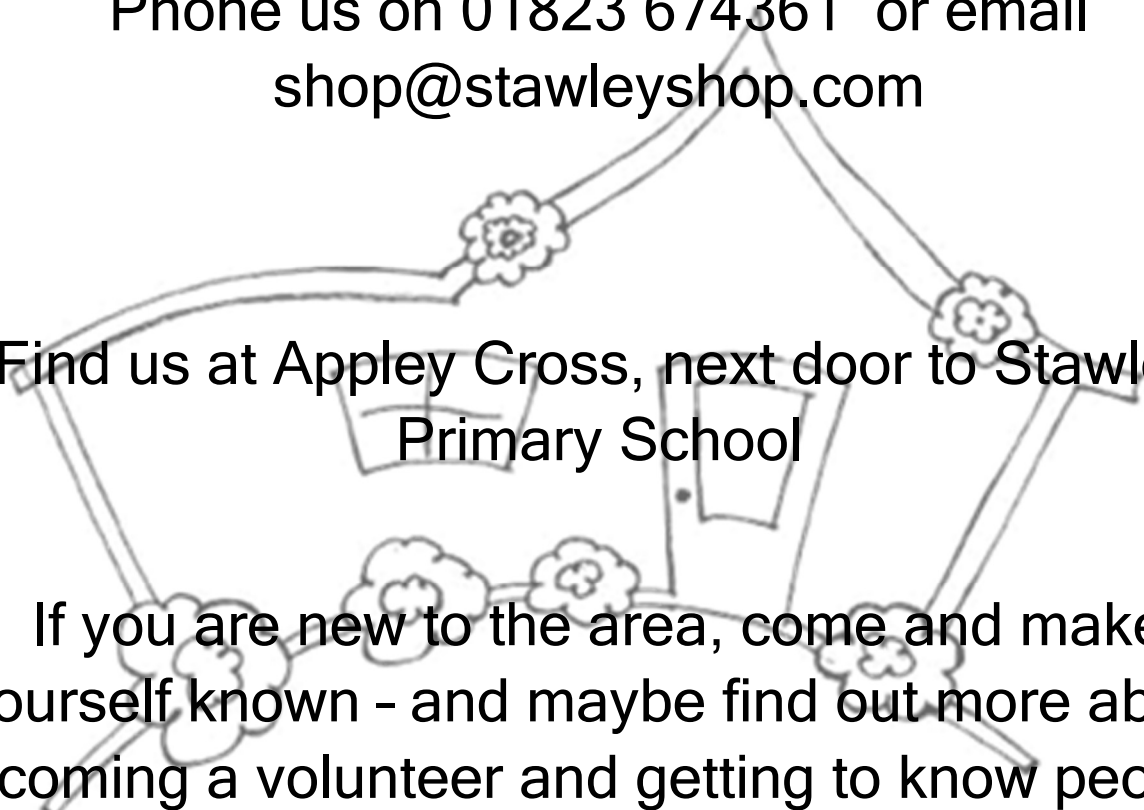
New members always welcome

### Contact The Parish News on:

[ashparishnews@gmail.com](mailto:ashparishnews@gmail.com)

# Stawley Village Shop & Tea Room

Phone us on 01823 674361 or email  
[shop@stawleyshop.com](mailto:shop@stawleyshop.com)



Find us at Appley Cross, next door to Stawley  
Primary School

If you are new to the area, come and make  
yourself known - and maybe find out more about  
becoming a volunteer and getting to know people...

## We are Open:

Monday to Friday 8 am to 5.30 pm

Saturdays 8 am to 2 pm

Sundays 9 am to 11 am

Monday 30th August, Bank Holiday opening

8 am to 12 midday

Post Office services available every Thursday  
11.30 am to 1.30 pm

## The August Quiz

1. The men's pre Wimbledon tennis tournament is held at Queen's. Where is the ladies' equivalent event held?
2. What is the family's surname with whom Paddington Bear lodges in London?
3. 'Old West Action' is an anagram of which legendary American actor/director, now aged 91?
4. To which Southern Hemisphere country are black swans native?
5. Which UK bank was taken into public ownership in 2008, as an alternative to insolvency?
6. Who currently appears on the reverse of the ten pound note?
7. Herd, pod or school is the term for which group of animals?
8. What is the capital of the state of Western Australia?
9. Which English county contains Burton-upon-Trent, Tamworth and Newcastle-under-Lyme?
10. Who immediately preceded Tony Blair as UK prime minister?
11. Which type of sugar is found in dairy products?
12. In what year was the battle of Waterloo, when the Duke of Wellington's forces defeated Napoleon's army?
13. Three of the states of the USA begin with the letter 'C', California, Connecticut and which other?
14. In what does a horologist specialise?
15. The Menai Strait, varying in width from 400 metres to 1100 metres, separates which island from the British mainland?
16. What does the acronym 'SCUBA' stand for?
17. What date is the Autumnal Equinox, when autumn officially begins?
18. In which town is the National Library of Wales?
19. Who is the current Olympic Men's Singles Tennis champion, having beaten Juan Martin del Potro in the 2016 final?
20. In the garden, what is small, red and whispers?
21. The first beaver born on Exmoor for 400 years has been named after which England football player?
22. Cheshire, Duddleswell, Swaledale and Hereford Hop are all types of which culinary delicacy?
23. With which US city is the Golden Gate Bridge commonly associated?
24. Which Oscar-winning Welsh actress shares a birthday with her famous husband?
25. Which is the Earth's largest desert?

*Answers on p. 32*

*With thanks to Alan Rose - Eds*



**THE FAMOUS PINK LAMPSHADE COMPETITION**

**HAVE YOU COLLECTED YOURS YET?**

**AvrilSilk@aol.com (01823 672131)**

**THERE WILL BE PRIZES!**

**ASHBRITTLE  
VILLAGE HALL  
SKITTLES  
& BBQ**

**... BYOB ... RAFFLE ...**



**FRIDAY 6th AUGUST  
7 PM**

## Open All Hours

### Contrast

I have in front of me two documents: one is a book and the other a poster. What are they and what leads me to put them against each other?

I've just finished reading the book. It was a stimulating piece of work, much of which I had read before. It is beautifully written, full of ideas to stir the brain and challenge the inner being. The book is entitled "Stawley Thoughts" (the complete edition) and written of course by Martin Jacoby. It contains his articles that have been printed in the Parish News, plus one or two contributions from other people.

As well as the quality of the language, it offers a lot of ideas about the world, about us and the natural realm which we inhabit. I can't say that I understand all of it but then my thinking is faith rather than science based. Martin is a biologist and philosopher who has spent many years thinking and teaching both adults and children.

One thing I admire in his book is how, in a humble and gentlemanly way, he conveys what he understands about the world and the state it is in. We know what he feels about climate change, for example, as he suggests what needs to happen to correct the harm that is being done. Indeed, he doesn't hold back on the causes and what action should be taken. Consequently we are made to think and, in doing so, we are invited to consider what we can do to play a part in the world's recovery.

I would like to thank Martin warmly for his thoughtful and provocative writing. I therefore would recommend you to get a copy and read it. I would be pleased to loan you mine, or copies are available in Stawley Shop.

Now for the poster which someone, unknown to us, put on our shop's notice board. It concerns climate change and does suggest what we might do (trash picking) and where to send donations (WWF) and so on. It offers a statement of 'truth' about animal life's importance, and mentions one species under threat (black jaguar) as an obvious proving fact.

The poster begins with the statement: 'Our animals are in danger because of you'. Is someone trying to make me feel responsible and guilty? Trying to provoke me to act as expected by whosoever?

There is neither persuasive argument nor invitation to know more. There is no name or person and organisation to contact. The whole thing

seems emotive and simplistic, with a layer of self-righteousness found in those who would love to control. Maybe I am doing whoever they are an injustice?

But I know which document I would turn to for guidance on how to remedy some of the problems in our world. Not the anonymous poster which will go to the tip to be recycled as someone's kitchen roll!

In the meantime, thank you, Martin, for contributing so well to our thoughts and understanding.

*Martin at the Shop*

## Free Demi-johns

We have more than 20 available - suitable for wine or cider making, etc

Please contact Pat or David Sweet

01823 672380

## Defibrillators and The Village Emergency Telephone System (VETS)

Would you know what to do if someone in your household collapsed, had a heart attack, or needed help? Within this community, we have four defibrillators which are available to anyone and they are easy to use by anyone. Quick access to a defibrillator really can save a life.

As a temporary measure in the light of the current situation, the Village Emergency Telephone System (VETS) has been converted to a helpline. If, for any reason, you require local assistance, you can ring the appropriate number for your area and, if someone is available, a local volunteer will respond.

The location of all the defibrillators and the phone numbers for the local volunteers for your area are now inside the back page of the Parish News.

*With thanks to Judy Webb, Eds*

EXHIBITION OF  
CERAMICS, GLASS  
AND MORE BY TWO  
LOCAL ARTISTS



**JENNY HICKS**

**BARBARA ROLL**



11th - 19th  
SEPTEMBER 2021  
11 AM—5PM

**STAWLEY MILL TA21 0HT**

## August Faces

With thanks to Alan Rose Answers on page 32







**Town & Country  
Plastering & Building Works**

- Skimming, Rendering
- Lime Plastering
- Tiling
- Block Paving

Stone, Brick and Block Walling

---

**Local Tradesman**

**Contact: Mark Westcott**

**TEL: 07956 062681**

**Email; markwestcottplastering@gmail.com**

**on time - in time - all the time**

## Home & Garden Services



**Emma  
or Brian**

Shorneys, Greenham, Wellington. TA21 0JW

indianamaish@hotmail.com 01823 672003

***Covid-19-still open for business &  
following Social Distancing Measures***

**Home:** Cleaning, Ironing, having a 'sort out',  
Food Prep

**Garden:** Maintenance, Allotment, Clearance

**Support Work:** Enabling people with  
disabilities

**Handy man Services**

*DBS, Food Hygiene, References Available*



*Nails*

*By*

*Samantha*

*Mobile Nail Technician*

*Treat yourself to a manicure or pedicure  
in the comfort of your own home!*

07828 052504

info@nailsbysamantha.co.uk



www.nailsbysamantha.co.uk



# *Wivey Link*

## *Going Places.....*

**Wivey Link will continue to provide a service for essential medical and dental appointments during the current emergency.**



- Door to door service operating from Wiveliscombe
- We cover all surrounding Parishes, Taunton and Wellington.
- Wheelchair friendly cars.
- Fares are very reasonable and bus pass holders get a concessionary rate.

For more information on using Wivey Link telephone **01984 624666**

Lines open: Mon - Fri 9.00a.m. till 5p.m. Sat 10a.m till 12.30p.m

Answerphone out of hours

**Wivey Link a division of the Wiveliscombe Area Partnership**

**Charity No. 1132983**

# **PHILLIP HUMMEL PLUMBING & HEATING**

All domestic plumbing work undertaken.  
Oil Boiler service and installation.  
Oil Aga / Rayburn Service.  
Oil tank service and installation.  
Bathroom design and installation.  
Bathroom and Kitchen Tiling.  
Underfloor heating installation.  
Unvented hot water cylinder installation.



Insured and registered oil heating engineer with Oftec.

Clean, tidy and polite, references if required are available.



For more information please contact  
Phillip Hummel

Home Telephone number. 01823 652782  
Mobile telephone number. 07813161470  
Email [philliphummelplumbing@gmail.com](mailto:philliphummelplumbing@gmail.com)

ALL WORK  
GUARANTEED

# TCB ROOFING

FREE  
SCAFFOLDING

YOUR LOCAL & RELIABLE FAMILY RUN BUSINESS  
EXPERTS IN FELT ROOFING, SLATING & TILING

- New Roofs & Repairs • Leadwork & Valleys
- Roof Overhauling • Re-Pointing Of Ridges & Chimneys
- Chimneys Rebuilt, Capped, Lowered Or Removed
- Roof Tile Cleaning - Moss & Algae Removed

## FLAT ROOFING

FELT Roofing / Garages / Porches / Dormers Etc

• NO JOB TOO BIG OR SMALL • OAP DISCOUNT

**01823 673073 / 07788 747303**

• FREE QUOTES • FAST RESPONSE • COMPETITIVE RATES

**H Tredwin & Son Ltd**  
**Independent Funeral Directors**  
**15 & 17 North Street, Wellington**



Providing a proficient, personal and caring  
service at **all** times.

Fifth generation independent family business

Private chapels of rest

Pre-paid funeral plans

*www.htredwinandson.co.uk*

Contact Nick or Louise Tredwin: Telephone: 01823 672287

Mob: 07702 726264



*Sympathetic repair and restoration of historic buildings*

- \* HISTORIC BUILDING CONSERVATION AND RESTORATION SPECIALISTS
- \* TRADITIONAL LIME RENDERING, POINTING AND INTERIOR PLASTERING
- \* STONE CONSERVATION AND MASONRY REPAIRS
- \* FAÇADE RESTORATION AND PAINT REMOVAL SYSTEMS
- \* ROOFING AND LEADWORK
- \* TIMBER WINDOW REPAIRS
- \* TRADITIONAL CARPENTRY AND BESPOKE JOINERY
- \* KNOWLEDGE AND EXPERIENCE OF WORKING ON ALL FORMS OF LISTED BUILDINGS, INCLUDING ECCLESIASTICAL

**www.thewessexconservationco.co.uk**  
info@thewessexconservationco.co.uk  
George Hannon: 07727 177467  
Will Stevens: 07815 464908  
14 George Street, Wellington, Somerset TA21 8JA



*Our company is accredited by the guild of master Craftsmen, this means we will abide by their code of practice so you can be assured of the highest quality of workmanship at a reasonable price, giving you complete peace of mind at all times.*

## Home Aerials

**Tel: 01984 623232**

**homeaerials@gmail.com**

All Types of Aerials & Satellite

Digital Upgrade Specialists

Digital Boxes Supplied and Fitted

Wiveliscombe & Surrounding Areas

Local, Reliable, Experienced Engineer

**Contractors for Local Authorities**

**and Housing Associations**

**A Family Run Business**

**for over 39 years Please contact Lulu or  
Martin Milton**

## Little Ball Boarding Kennels

... the perfect countryside holiday for your dog.

*'Contact us to arrange a visit,*

*we look forward to seeing you.'*

Kittisford Farm

Bathealton

Taunton TA4 2AR

E: littleballkennels@gmail.com

T: 07860 863880

Little Peg's Clothes

LOVELY CLOTHES FOR YOUR  
LOVELY CHILDREN!

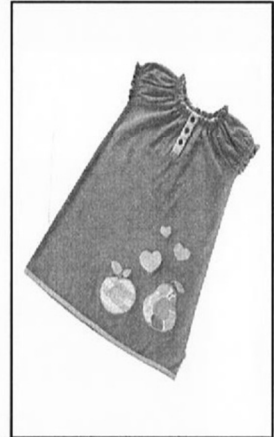
At Little Peg's we have gorgeous clothes for your  
favorite little treasures!

Check us out online at [www.littlepegscloudes.com](http://www.littlepegscloudes.com) or  
befriend us on Facebook for the latest news and special offers.

Thanks to all who have supported us  
so kindly in our first year.

*PS if you need a last minute gift, do call us on  
01823 674589 and we'll be glad to help!*

**Brands:** No Added Sugar, Kite Kids, Toby Tiger, Inch Blue,  
Magnificent Baby, Piccalilly, Little Shrimp, Powell Craft



# PLASTERING

P SWAN PROPERTY  
PROPERTY MAINTENANCE AND HOME IMPROVEMENT SERVICES

- Reskimming
- Patching
- Plasterboard and Hardwall Plastering
- Painting and Finishing
- No Obligation Quotes



Contact Peter Swan  
Phone: 07508 214 525  
Email: [info@pswanproperty.com](mailto:info@pswanproperty.com)  
The Croft, Appley, TA21 0HJ



# WOODENWAYS TIMBER



**Seasoned Hardwood Firewood £65**  
**Dumpy Bag Softwood £45**

Large stock oak beams, oak flooring, timber cladding & specialist timbers

Also available log cabins, oak frame houses to porches

Kiln dried fire wood & kilning service

Tree surgery & forestry work 25 years experience

**Tel 07970 969856**

**Email [dan@woodenways.com](mailto:dan@woodenways.com)**

## **Cleaning and Home Help**

One off or regular jobs

General cleaning

*My cleaning products or yours*

*End of tenancy cleaning*

*Help with shopping*

*Dog walking*

*And much more*

References

available

Call Sarah on

07772 761677



**MOBILE DOG GROOMING**

**THE SOGGY DOGGY**  
**(EXE-VALLEY)**

The Grooming Station That Comes  
To Your Location

Call Rachael on 07772272923

Find us on Facebook

[thesoggydoggy89@yahoo.com](mailto:thesoggydoggy89@yahoo.com)



# REPAIR, FIX & RE-USE

*Before you throw it away, can you give it another chance?*

- \*Hand and garden tools    \*Garden furniture
- \*Wheelbarrows    \*Small machinery    \*Woodwork
- \*Metalwork and light fabrication    \*Latches & Catches
- \*Fabric repair & stitching    \*Tables, chairs & cupboards
- \*Handles    \*Doors    \*Gates    \*Brackets    \*Shelves

**Before that trip to the tip....**

**see if it can be mended**

**call Steve on 672102 or 07812 054 641**

**No fix, no charge**



## **Kim White D.O.**

**Registered Osteopath**

**Freathingcott Farm, Holcombe Rogus, Wellington TA21  
0NG**

**For appointments please contact the practice on:**

**01823 672925**



## RACHEL GUNDRY

### LETTER CARVING IN STONE

Headstones Commemorative

Poetry for the Garden House signs



*Design & Illustration*

*Visit local studio to see  
stone samples and dis-  
cuss any enquiry*

**TEACHING / WORK-  
SHOPS AVAILABLE**

Sundials Foundation  
stones

*Carving in situ*

*Restoration/recarving*

Stonehill  
Cottage

rachelgundry@hotmail.co.uk

tel: 01984 624 897

mobile: 07914 822 944 (weekdays)

## Wanted



Standing hardwood: Oak, Ash,  
Beech etc

**TOP PRICES PAID**

***Call Carl Westcott 07973564759***



**Household bin  
full, give us a call!**



We also supply:

Dumpy bag service – you fill, we collect!

Any amount and any grade of crushed concrete including delivery if required.

2, 4, 6, 8 & 12 cu skips.

20 & 40 cu Roll On Roll Offs.

Grab hire available to collect your awkward waste.

Asbestos disposal available.

**Wasteology Ltd is not limited to council schedules, our only schedule is yours!**

# Anthony James

Dip F.D., MB.L.E., MB.L.F.D.

## Funeral Director

A Dedicated Family Business

24 hours, 7 days a week

Caring Personal Service

Private Chapels of Rest

Golden Charter Pre Payment Funeral Plans



Telephone: 01984 624149

Broad Meadow View

West Road

Wiveliscombe

TA4 2TB

Golden Charter 

Funeral Plans

[www.tauntonfuneralservice.com](http://www.tauntonfuneralservice.com)

[tfstauntonwivey@aol.com](mailto:tfstauntonwivey@aol.com)

Taunton Funeral Service

55 Bridge Street

Taunton

TA1 1TP

Tel: (01823)

321077



Installation of Fencing, Gates  
and Sheds

Hard Landscaping  
Fencing Repairs

Boundary Fencing  
Decking

Please contact Chris

[www.cannonfencing.com](http://www.cannonfencing.com)

[cannonfencing@outlook.com](mailto:cannonfencing@outlook.com)

07434 640004

## GB BUILDING

&

## MAINTENANCE

### Listed Building Specialist

\*Lime Plastering

Internal/External

\*Cob Repairs

\*Lathe and Plaster

\*Stonework

\*Cut Roof, Green Oak etc.

Contact Gary Broom

Telephone 01823 283212

or Mobile 07776032289

# WIVEY HARDWARE

**10 WEST STREET**  
**Tel: 01984 624268**

**Tools, Electrical Goods, Paint & DIY,  
Kitchenware, Cookware, Seeds, Compost,  
Garden Accessories, Camping Equipment,  
Wickerware and key cutting service**

*Monday – Friday 9 am – 5 pm Saturday 9 am – 3 pm*

## KRT HOME IMPROVEMENTS

Quality Painting and Decorating  
for all your decorating needs, free estimates,  
over 40 years experience  
Please call 01823 674143 or 07429900469

## Experienced Gardener

Garden maintenance, pruning,  
clearing and cutting back, plant-  
ing, planting plans.  
Also mole catching.  
Call Jen – 07837 983601  
email - [Jen.Sim@btinternet.com](mailto:Jen.Sim@btinternet.com)



The social link  
for the  
countryside

Want to improve your social life  
then join

**West Somerset and East Devon  
Country Link**

An informal group run by the members  
*Events include meals out, BBQs, country  
walks, music & dancing.*

*For information and a  
free programme contact:*

*Di ~ 01823 672666 or  
Colin ~ 07849 757985*

## KEY'S CLEANING SERVICES LTD

Friendly team of reliable and trustworthy craft

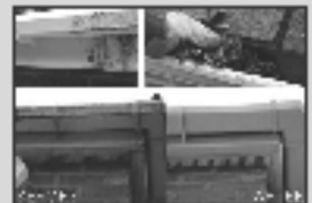
### FAMILY RUN BUSINESS



- We clean all windows inside and outside and always include window sills & frames.
- Skylights / solar panels / conservatories and any type of roof.
- We offer regular and one off cleans.

## JJK GUTTERING SERVICES LTD

- We empty, unblock and clean gutters, fascias, soffits, downpipes, conservatories & roofs.
- We can fix and replace any leaking guttering.



PLEASE CALL FOR A FREE QUOTE ON

**01823 272260 07885 451628**

**WWW.KEYSCLEANINGSERVICES.CO.UK**

Email: [keysocleaning@btinternet.com](mailto:keysocleaning@btinternet.com)

# The Cottage Beyond

Kittisford Barton, Wellington, Somerset,

TA21 0RZ

[www.thecottagebeyond.co.uk](http://www.thecottagebeyond.co.uk)

01823 672736

Luxury award winning self-catering property accommodating up to 14 adults and 2 children in 6 comfortable bedrooms. Fabulous indoor swimming pool, hot tub and sauna.

Available throughout the year for weekends, weeks or mid week breaks.



# Potts Chimney Sweeping

Sweeping chimneys in Wellington and  
Taunton since 1982



07789 013092

[www.pottschimneysweeping.co.uk](http://www.pottschimneysweeping.co.uk)



**WIVELISCOMBE JOINERY LTD.**  
Quality Traditional Joinery

**Contact Rob Hill**  
**07845 756822**

[wiveliscombe.joinery@outlook.com](mailto:wiveliscombe.joinery@outlook.com)



Naturally grown seasonal  
vegetable boxes -  
delivered weekly to your door.

**Alex and Ruth**

**07854680335 or 01823 672055**

[steepholding.wordpress.com](http://steepholding.wordpress.com)

*Holcombe Rogus, TA21 0JY*

For local cards, prints and paintings

[www.anniemusgrove.co.uk](http://www.anniemusgrove.co.uk)

Meadow Farm, Greenham



**DAVID PEARCE**



**MANUFACTURER & STOCKIST OF  
BEE-KEEPING EQUIPMENT**

*Hives and Frames*

Haddeo, Bathealton, Taunton TA4 2AG

Tel: 01984 623851

**Willowbrook Nursery  
and Garden Centre**

Your local family-run Garden Centre Well stocked garden shop

Café and Tea room Bow Aquatic Centre

Pet and Bird Supplies 'Winesolution' Wine shop

Sheds B & M Camping

Situated on the A38 between Taunton and Wellington

Telephone: 01823 461324 \*Open 7 days a week  
[www.willowbrooknurseryandgardencentre.co.uk](http://www.willowbrooknurseryandgardencentre.co.uk)



**Painter and Decorator**

**Professional lady decorator**

**Courteous, neat and tidy**

**All jobs considered**

**Free estimates**

**Call Teri on 07866 126877 or 01823 680402**

**The Caretaker**

*Home and Animal Sitter*

Dog walking. Looking after all your animals when you go away. I am insured

References available

Please call me on 07926 174332

**GREEN & CARTER**

**Water Engineers – Established 1774**

Manufacturers of water powered hydraulic RAM pumps

General water engineers Bore holes,

Water filtration and purification

Manufacturers of UV water purifiers and chlorination plant

Telephone: 01823 672365 (24 hrs)

Fax: 01823 672950 Mobile: 0374 108884 . [greenandcarter.com](http://greenandcarter.com)

**PETER COOPER**

**07960 589734**

**CARPENTRY / JOINERY**

**HARDWOOD FLOORING / FURNITURE**

**FENCING / DECKING**

***Advertise Here***

Our rates are:

£1.40 per month for a small box,

£3.00 for a quarter page,

£6.00 for a half page and

£12.00 for a whole page.

Further details on page 31

**LOGS+TREE  
SURGERY**

- dry, seasoned logs
- large or small quantities
- cut & split as required
- tree care, felling & lopping
- plant & trailer hire

**Carl Westcott**

m: 07973 564759



**Janet Morris**



**Freelance Hairdresser**

Gents, Ladies and Children

For appointment or consultation please call:

**01823 660191 or 07768648244**

## Defibrillators and The Village Emergency Telephone System (VETS)

### ASHBRITTLE & STAWLEY:

01823 244104

**BATHEALTON:** 01984 322919

**KITTISFORD, TRACEBRIDGE &  
APPLEY:** 01823 245101

The VETS numbers are available should you need assistance in an emergency or help to access a defibrillator. Remember, in the event of a possible cardiac arrest in your household: **ALWAYS DIAL 999 FIRST IN AN EMERGENCY AND, IF A CHANCE ARISES THEN DIAL THE VETS NUMBER, SPECIFYING THAT YOU NEED A DEFIBRILLATOR RATHER THAN GENERAL HELP**

There are four local **defibrillators** which are easy to use and available to anyone. They are permanently located at these places and can be found using the //What3words codes below.

**Ashbrittle Village Hall**, on outside wall  
*blurts.flats.crouching*

**Bathealton Village Hall**, on outside wall  
*relatives.widgets.rolled*

**Kittisford New House Farm**, on wall,  
opposite church *bonkers.regime.lyricist*

**Stawley Shop**, on outside wall  
*messaging.servers.quaking*

These are all accessible 24 hours a day and no access codes are required.

### Editorial Policy

Please note that the views expressed in this magazine are the responsibility of the individual author(s) and are not necessarily the views held by the editors of the Parish News.

## Local Information

### Neighbourhood Watch Contact Numbers

Greenham & Tracebridge	Caro Ayre	01823 672603
Appley	Rachel Chesterton	01823 673063
Ashbrittle	Charles Doble	01823 672365
Stawley	Pat Sweet	01823 672380
Wellisford	William Thomas	01823 673143
Bathealton & Poleshill	Terry McNicholas	01984 624428
Outer Bathealton	Carol Weir	01984 623565
Springrove	Doreen Orton	01823 400731

**Police-non-emergency number 101**

### Police Beat Team

**PC Joanne Jeffery** 2378 Tel:07889 657943

*Joanne.jeffery@avonandsomerset.police.uk*

**PCSO Louise Fyne** 6945 Tel:07889 659476

*Louise.fyne@avonandsomerset.police.uk*

### Parish Councils

**Ashbrittle Chairman** Charles Doble 01823 672365 / 672618

Email *charles.doble@ukgateway.net*

**Bathealton Chairman** Charles Eustice 01823 401248

**Stawley Chairman** Paul Musgrove 01823 672627

email: *stawleypc@yahoo.co.uk* *www.stash.org.uk*

### Community Halls

#### Appley Pavilion and Recreation Field

– to book, ring Suzette Williams on 01823 672266 or  
email: *williamspfa@outlook.com*

#### Ashbrittle Village Hall

– to book, ring Pat Gainey on 01823 672760

#### Bathealton Village Hall

– to book, ring Tilly Willis on 01984 624459

### Local Groups

#### Stawley under Fives at the Appley Pavilion.

Becky Allder Pre-schools Manager

Swallows, Sampford Arundel 01823 672342 Mon/Tues

Stawley Under Fives 07753 552736 Weds/Thurs/Fri

**Rural Community Initiative (RCI)** is a local charity set up in 1999 to support the way of life of the people of this rural community. For further information please contact the chair of the committee; Mike Parkinson *m\_f.parkinson@btinternet.com*

## PARISH NEWS DETAILS

**The Editors and the next issue deadline date are on the back cover.** Please send items for publication to the Editors in good time to ensure publication. There is only a short time between the deadline and the printing of the Parish News and late items may not be included. We are pleased to receive items in any form (typed, in long hand, or by email). Naturally, we prefer items by email *ashparishnews@gmail.com* when they should be in Microsoft 'Word' format, as this saves a great deal of typing!

**Advertising** Our rates are £1.40 per month for a small box, £3.00 for a quarter page, £6.00 for a half page and £12.00 for a whole page. Advertising for community events, charity and church fundraising events in our area are normally carried free of charge. Occasional one-off adverts from residents in our area seeking to sell or buy an article or seeking to acquire or offer a service are also carried free of charge. In all cases the style, layout and size allocated to an advert is at the discretion of the Editors.

**Editors:** Maurice Stanbury 01823 672216 and Julia Swan 01823 672102 e-mail address: *ashparishnews@gmail.com*

**Treasurer:** Andrew Millard . Barton Barn, Kittisford, Wellington TA21 0RZ

**Bank details:** Account Name: The Parish News,

Sort Code: 30-98-45. Ac no. 01828373

**Cover Design** - Church illustrations derived from originals by the late Diana Willis.

**Distribution:** David Sweet 01823 672380

**Printed by** Sharper Print Tel 07906 52190

## DATES FOR YOUR DIARY

### *September*

5th		Stawley Flower Show
11th		Cricket Club Car Boot Sale, Appley Pavilion.
11th - 19th	11 - 5pm	Exhibition at Stawley Mill
11th - 3rd October	11 - 5pm Closed Mondays	Open Studio at Bicknell's, Bathealton
30th		Lunch Club, Ashbrittle Village Hall

### *October*

2nd		Hungry Town, an American folk duo from Vermont. Appley Pavilion. <b>CANCELLED</b>
3rd	11 am - 3 pm	Apple Day at Appley Pavilion

## Quiz Answers

### **August Quiz answers**

- 1 Eastbourne
- 2 Brown
- 3 Clint Eastwood
- 4 Australia
- 5 Northern Rock
- 6 Jane Austen
- 7 Porpoises
- 8 Perth
- 9 Staffordshire
- 10 John Major
- 11 Lactose
- 12 1815
- 13 Colorado
- 14 Clocks and watches
- 15 Anglesey
- 16 Self contained underwater breathing apparatus
- 17 September 22nd
- 18 Aberystwyth

- 19 Andy Murray
- 20 Horseradish
- 21 (Marcus) Rashford
- 22 Hard cheese.
- 23 San Francisco
- 24 Catherine Zeta-Jones
- 25 The Antarctic

### **August faces answers**

- 1 Rebecca Adlington
- 2 Sir Ian McKellen
- 3 Anya Taylor Joy
- 4 Adam Henson
- 5 Maureen Lipman
- 6 Jay Blades
- 7 Clare Foy
- 8 Ricky Tomlinson
- 9 Victoria Coren Mitchell
- 10 Andrew Scott
- 11 Susie Dent
- 12 Ian Lavender

**Next Deadline Date: Friday 20th August**

**Editors: Julia and Maurice**